

SAT : INSAT-3D IMG

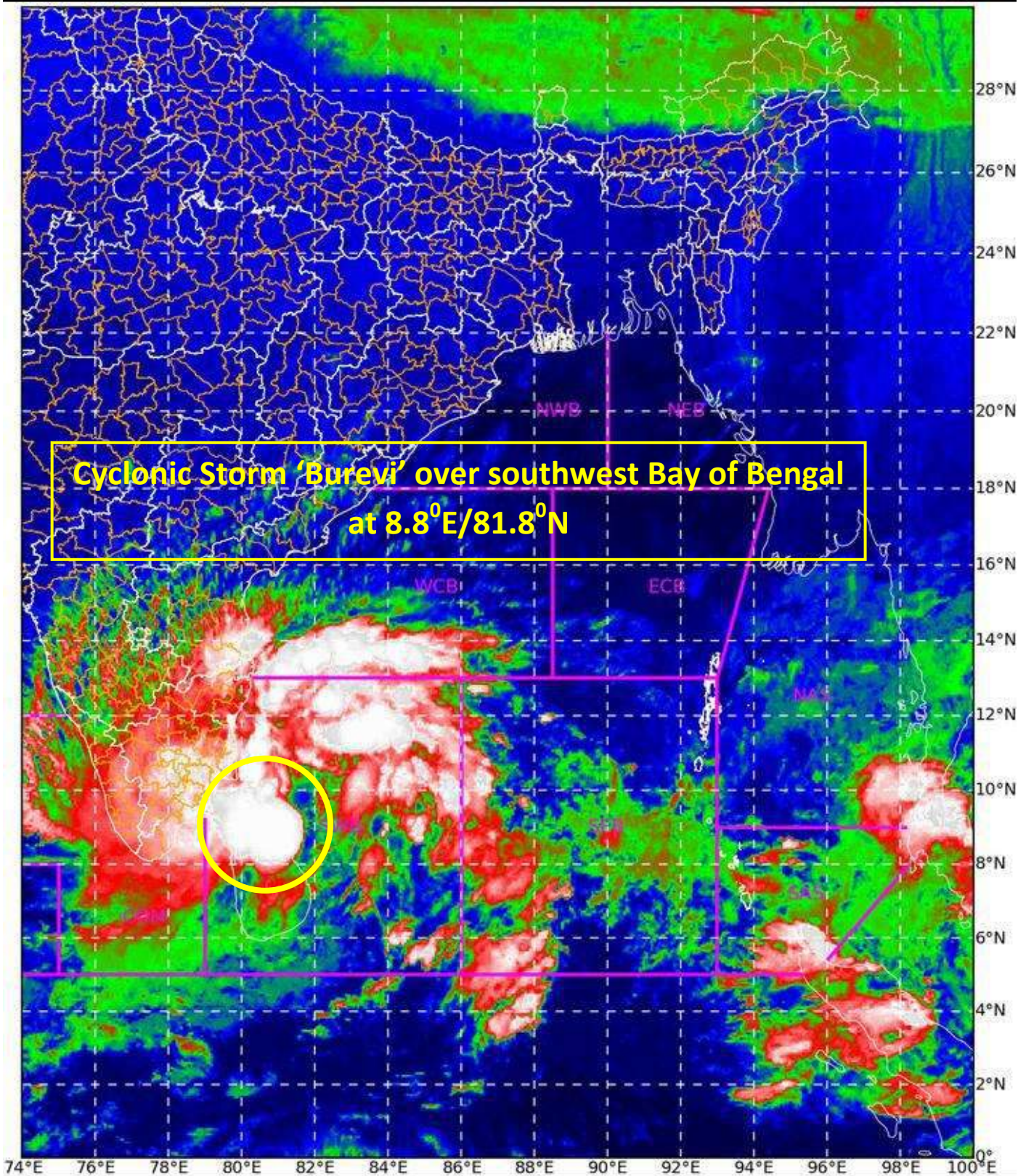
02-12-2020/(1430 to 1456) GMT

IMG_TIR1_TEMP 10.8 um

02-12-2020/(2000 to 2026) IST



L1C Mercator



Celsius

IMD, DELHI

Spatial rainfall distribution: Isolated: ≤25%, A few: 26-50%, Many: 51-75%, Most: 76-100%

Rainfall amount (mm): Heavy rain: 64.5 – 115.5, Very heavy rain: 115.6 – 204.4, Extremely heavy rain: 204.5 or more.



OBSERVED AND FORECAST TRACK ALONGWITH CONE OF UNCERTAINTY OF CYCLONIC STORM "BUREVI" OVER SOUTHWEST BAY OF BENGAL BASED ON 1200 UTC OF 2nd DECEMBER, 2020.



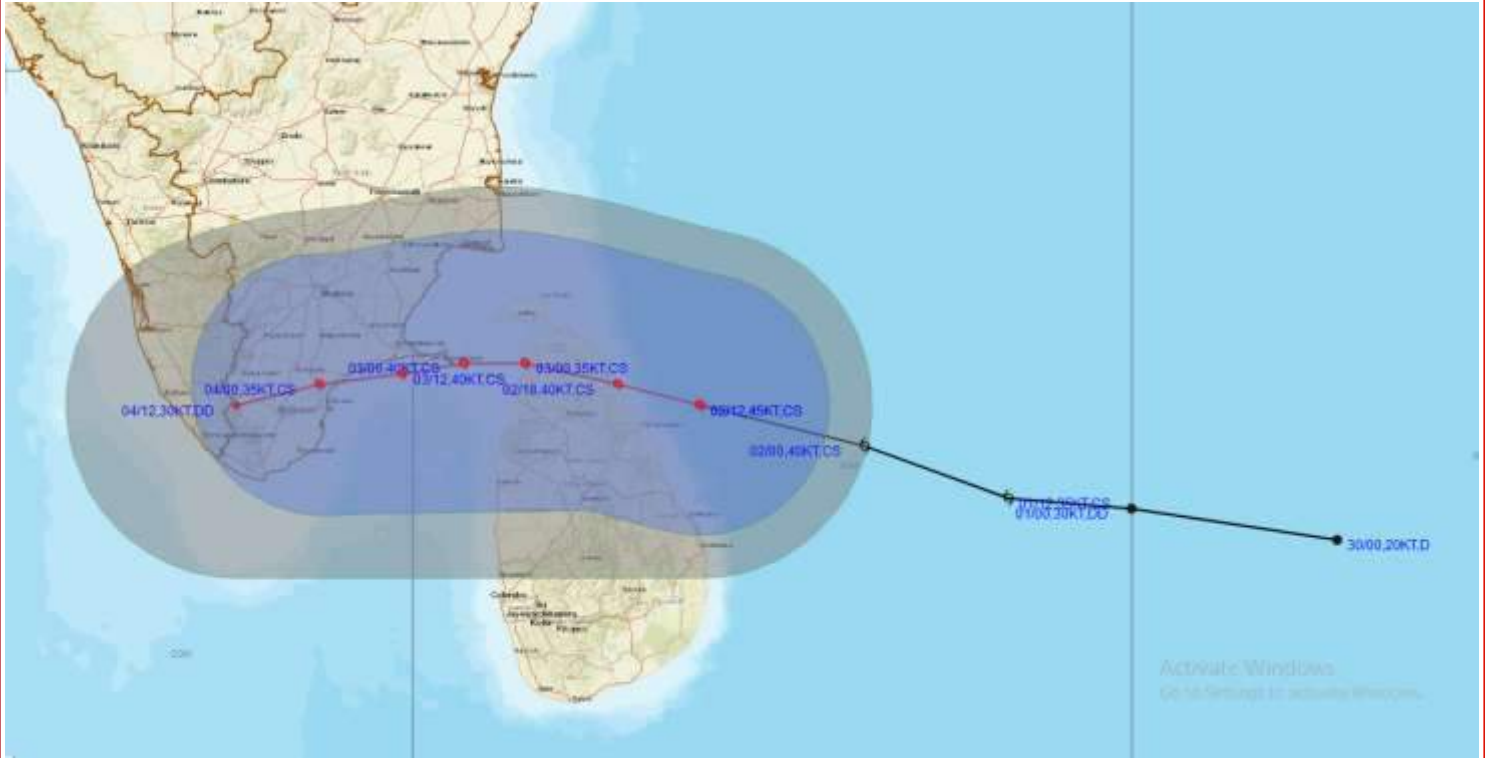
DATE/TIME IN UTC
IST=UTC + 0530
L: LOW PRESSURE AREA
WML: WELL MARKED LOW PRESSURE AREA
D: DEPRESSION (17-27 KT)
DD: DEEP DEPRESSION (28-33 KT)
CS: CYCLONIC STORM (34-47 KT)
SCS: SEVERE CYCLONIC STORM (48-63KT)
VSCS: VERY SEVERE CYCLONIC STORM (64-89 KT)
ESCS: EXTREMELY SEVERE CYCLONIC STORM (90-119 KT)
SuCS: SUPER CYCLONIC STORM (\geq 120 KT)

- LESS THAN 34 KT
- 34-47 KT
- \geq 48 KT
- OBSERVED TRACK
- FORECAST TRACK
- CONE OF UNCERTAINTY

Spatial rainfall distribution: Isolated: \leq 25%, A few: 26-50%, Many: 51-75%, Most: 76-100%
 Rainfall amount (mm): Heavy rain: 64.5 – 115.5, Very heavy rain: 115.6 – 204.4, Extremely heavy rain: 204.5 or more.



OBSERVED AND FORECAST TRACK ALONGWITH QUADRANT WIND DISTRIBUTION OF CYCLONIC STORM "BUREVI" OVER SOUTHWEST BAY OF BENGAL BASED ON 1200 UTC OF 2nd DECEMBER, 2020.



DATE/TIME IN UTC
 IST=UTC + 0530
L: LOW PRESSURE AREA
WML: WELL MARKED LOW PRESSURE AREA
D: DEPRESSION (17-27 KT)
DD: DEEP DEPRESSION (28-33 KT)
CS: CYCLONIC STORM (34-47 KT)
SCS: SEVERE CYCLONIC STORM (48-63KT)
VSCS: VERY SEVERE CYCLONIC STORM (64-89 KT)
ESCS: EXTREMELY SEVERE CYCLONIC STORM (90-119 KT)
SuCS: SUPER CYCLONIC STORM (≥ 120 KT)

● LESS THAN 34 KT
 ⚡ 34-47 KT
 ⚡ ≥ 48 KT
 — OBSERVED TRACK
 — FORECAST TRACK
 ▲ CONE OF UNCERTAINTY
AREA OF MAXIMUM SUSTAINED WIND SPEED:
 ■ 28-33 KT (52-61 KMPH)
 ■ 34-49 KT (62-91 KMPH)
 ■ 50-63 KT (92-117 KMPH)
 ■ ≥ 64 KT (≥118 KMPH)

IMPACT OVER THE SEA

| MSW (knot/kmph) | Impact | Action |
|-----------------|------------------------|--|
| 28-33 (52-61) | Very rough seas | Total suspension of fishing operations |
| 34-49 (62-91) | High to very high seas | Total suspension of fishing operations |
| 50-63 (92-117) | Very high seas | Total suspension of fishing operations |
| ≥ 64 (≥118) | Phenomenal | Total suspension of fishing operations |

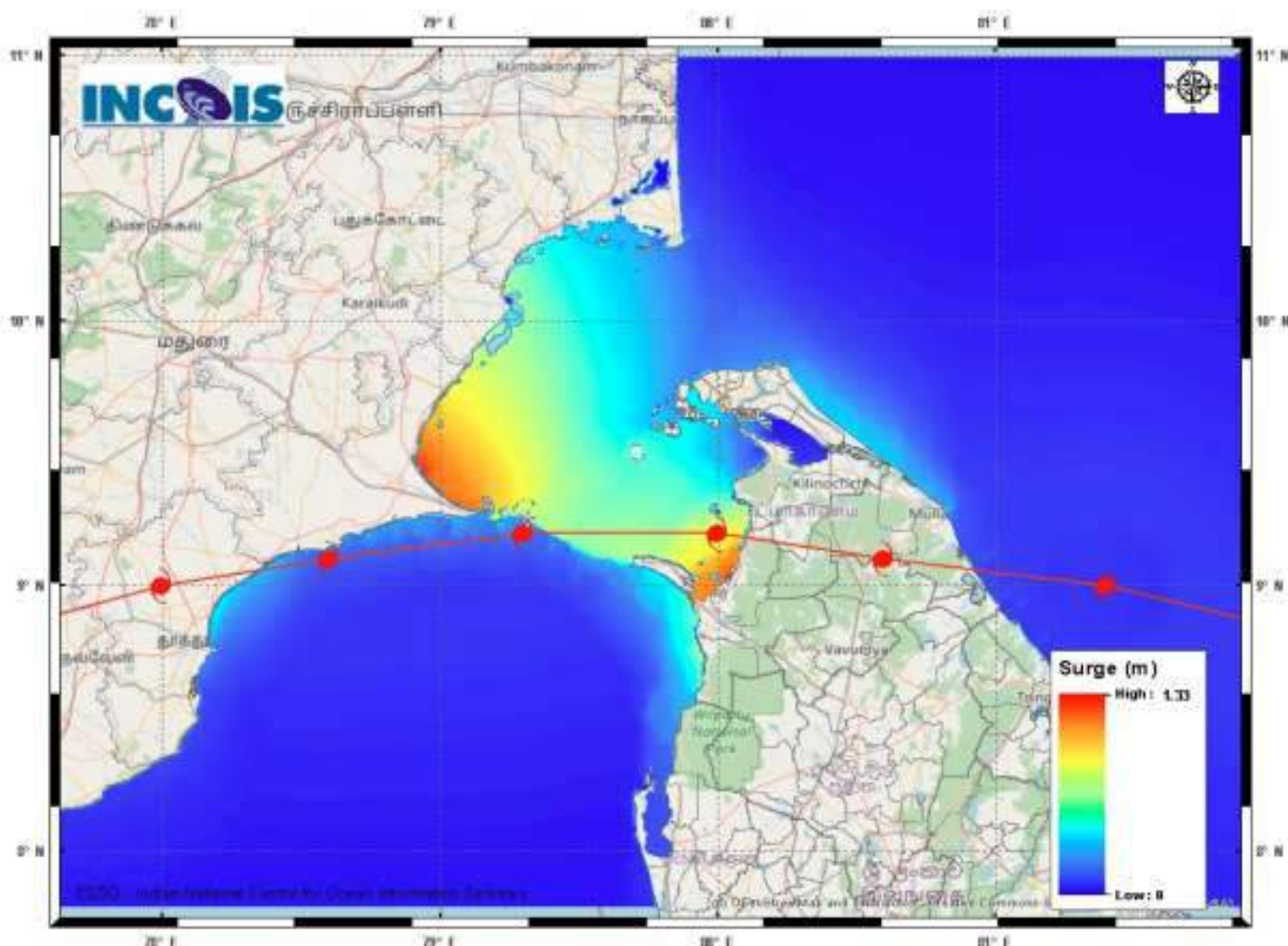
Spatial rainfall distribution: Isolated: ≤25%, A few: 26-50%, Many: 51-75%, Most: 76-100%

Rainfall amount (mm): Heavy rain: 64.5 – 115.5, Very heavy rain: 115.6 – 204.4, Extremely heavy rain: 204.5 or more.

STORM SURGE HEIGHT INFORMATION:

* The below listed surge heights are over and above astronomical tide.

| MANDAL/TALUK | DISTRICT | STATE / UNION TERRITORY | NEAREST PLACE OF HABITATION | STORM SURGE (m) | EXPECTED INUNDATION EXTENT (km) |
|----------------|----------------|-------------------------|-----------------------------|-----------------|---------------------------------|
| Tiruvadanaï | Ramanathapuram | Tamil Nadu | Marungur | 0.8-1.3 | Upto 0.69 |
| Ramanathapuram | Ramanathapuram | Tamil Nadu | Pathanendal | 0.3-1.2 | Upto 0.47 |
| Arantangi | Pudukkottai | Tamil Nadu | Enadi | 0.5-0.9 | Upto 0.39 |
| Peravurani | Thanjavur | Tamil Nadu | Sendalaivayal | 0.6-0.7 | Nil |
| Ottapidaram | Thoothukkudi | Tamil Nadu | Pattanamarudur | 0.5-0.6 | Nil |
| Pattukkottai | Thanjavur | Tamil Nadu | Palanjur | 0.4-0.6 | Upto 0.18 |
| Tuticorin | Thoothukkudi | Tamil Nadu | Mappilaiurani | 0.2-0.5 | Upto 1.94 |
| Vilattikulam | Thoothukkudi | Tamil Nadu | Vaippar | 0.4-0.5 | Nil |



Storm Surge Forecast by INCOIS Model based on 0600 UTC of 2nd December

Spatial rainfall distribution: Isolated: ≤25%, A few: 26-50%, Many: 51-75%, Most: 76-100%
 Rainfall amount (mm): Heavy rain: 64.5 – 115.5, Very heavy rain: 115.6 – 204.4, Extremely heavy rain: 204.5 or more.