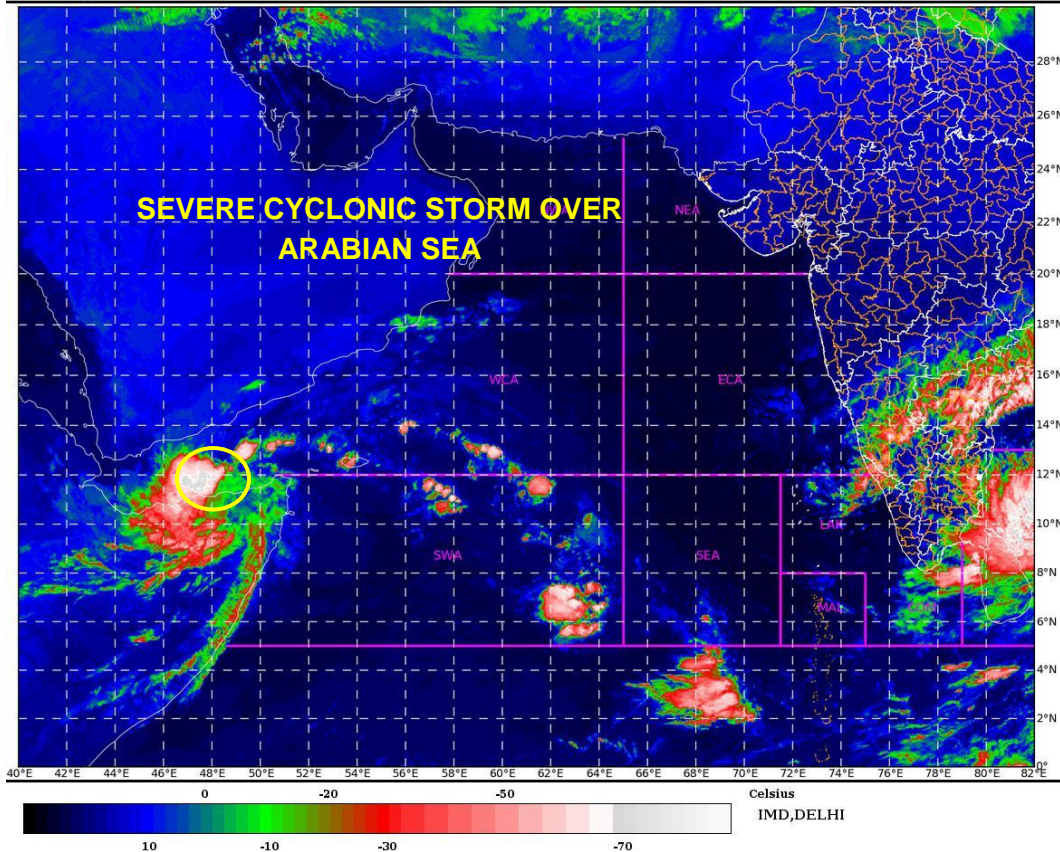


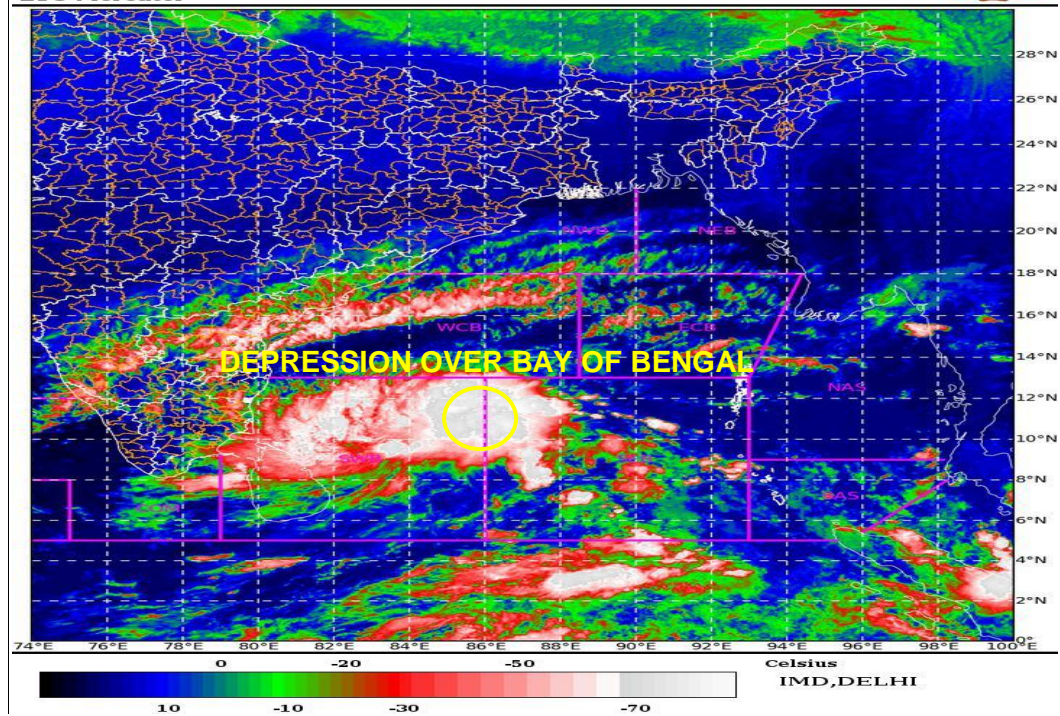
SAT : INSAT-3DR IMG
 IMG_TIR1_TEMP 10.8 um
 ARABIAN_SEA

23-11-2020/(0215 to 0242) GMT
 23-11-2020/(0745 to 0812) IST



SAT : INSAT-3DR IMG
 IMG_TIR1_TEMP 10.8 um
 L1C Mercator

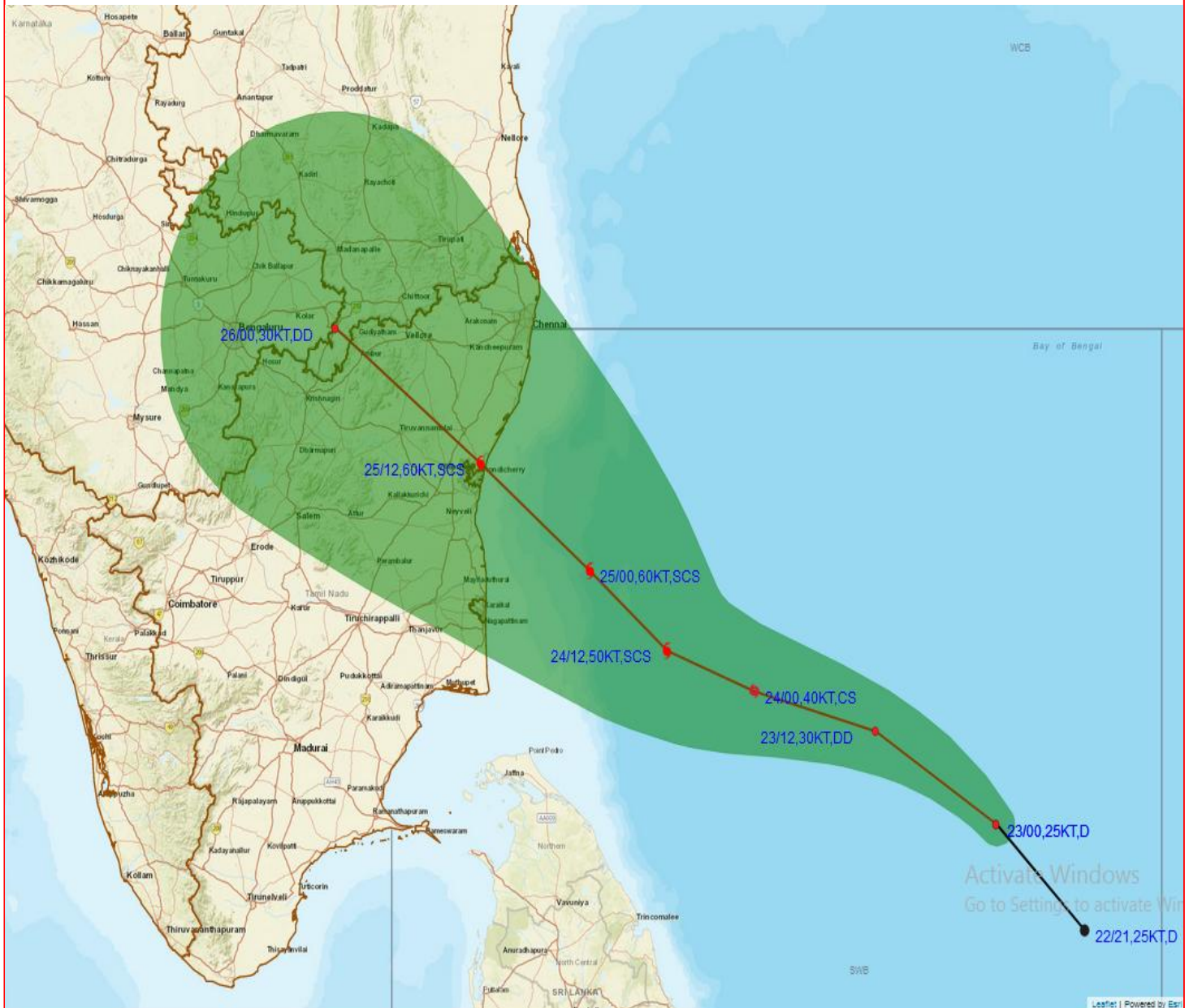
23-11-2020/(0215 to 0242) GMT
 23-11-2020/(0745 to 0812) IST



Spatial rainfall distribution: Isolated: $\leq 25\%$, A few: 26-50%, Many: 51-75%, Most: 76-100%
 Rainfall amount (mm): Heavy rain: 64.5 – 115.5, Very heavy rain: 115.6 – 204.4, Extremely heavy rain: 204.5 or more.



OBSERVED AND FORECAST TRACK ALONGWITH CONE OF UNCERTAINTY OF DEPRESSION OVER SOUTHWEST BAY OF BENGAL BASED ON 0000UTC OF 23rd Nov, 2020



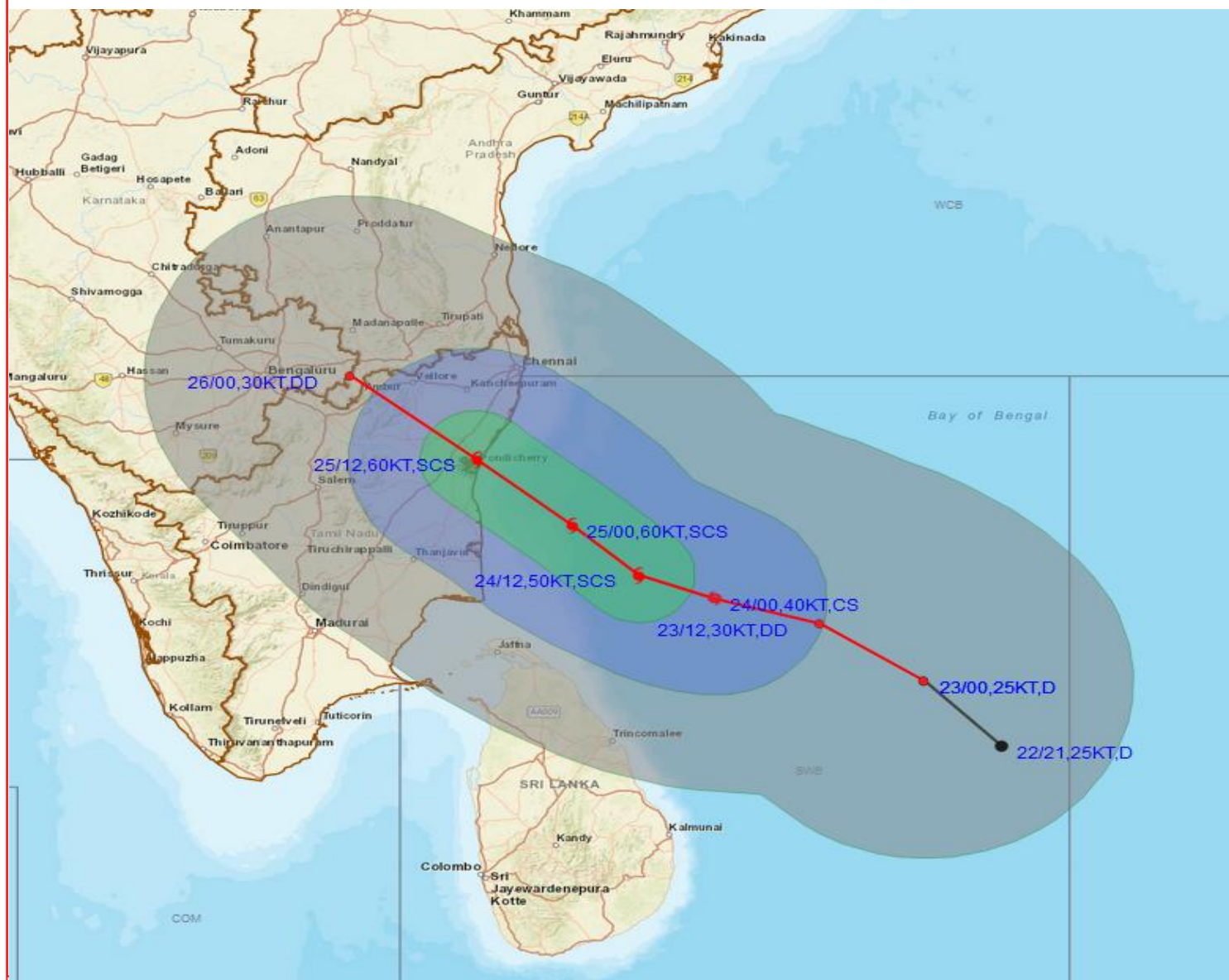
DATE/TIME IN UTC
IST=UTC + 0530
L: LOW PRESSURE AREA
WML: WELL MARKED LOW PRESSURE AREA
D: DEPRESSION (17-27 KT)
DD: DEEP DEPRESSION (28-33 KT)
CS: CYCLONIC STORM (34-47 KT)
SCS: SEVERE CYCLONIC STORM (48-63KT)
VSCS: VERY SEVERE CYCLONIC STORM (64-89 KT)
ESCS: EXTREMELY SEVERE CYCLONIC STORM (90-119 KT)
SuCS: SUPER CYCLONIC STORM (≥ 120 KT)

● LESS THAN 34 KT
● 34-47 KT
● ≥ 48 KT
— OBSERVED TRACK
— FORECAST TRACK
▲ CONE OF UNCERTAINTY

Spatial rainfall distribution: Isolated: $\leq 25\%$, A few: 26-50%, Many: 51-75%, Most: 76-100%
Rainfall amount (mm): Heavy rain: 64.5 – 115.5, Very heavy rain: 115.6 – 204.4, Extremely heavy rain: 204.5 or more.



OBSERVED AND FORECAST TRACK ALONGWITH QUADRANT WIND DISTRIBUTION OF DEPRESSION OVER SOUTHWEST BAY OF BENGAL BASED ON 0000UTC OF 23rd Nov, 2020



DATE/TIME IN UTC

IST=UTC + 0530

L: LOW PRESSURE AREA

WML: WELL MARKED LOW PRESSURE AREA

D: DEPRESSION (17-27 KT)

DD: DEEP DEPRESSION (28-33 KT)

CS: CYCLONIC STORM (34-47 KT)

SCS: SEVERE CYCLONIC STORM (48-63KT)

VSCS: VERY SEVERE CYCLONIC STORM (64-89 KT)

ESCS: EXTREMELY SEVERE CYCLONIC STORM (90-119 KT)

SuCS: SUPER CYCLONIC STORM (≥20 KT)

● LESS THAN 34 KT

○ 34-47 KT

● ≥ 48 KT

— OBSERVED TRACK

— FORECAST TRACK

▲ CONE OF UNCERTAINTY

AREA OF MAXIMUM SUSTAINED WIND SPEED:

■ 28-33 KT (52-61 KMPH)

■ 34-49 KT (62-91 KMPH)

■ 50-63 KT (92-117 KMPH)

■ ≥ 64 KT (≥ 118 KMPH)

IMPACT OVER THE SEA

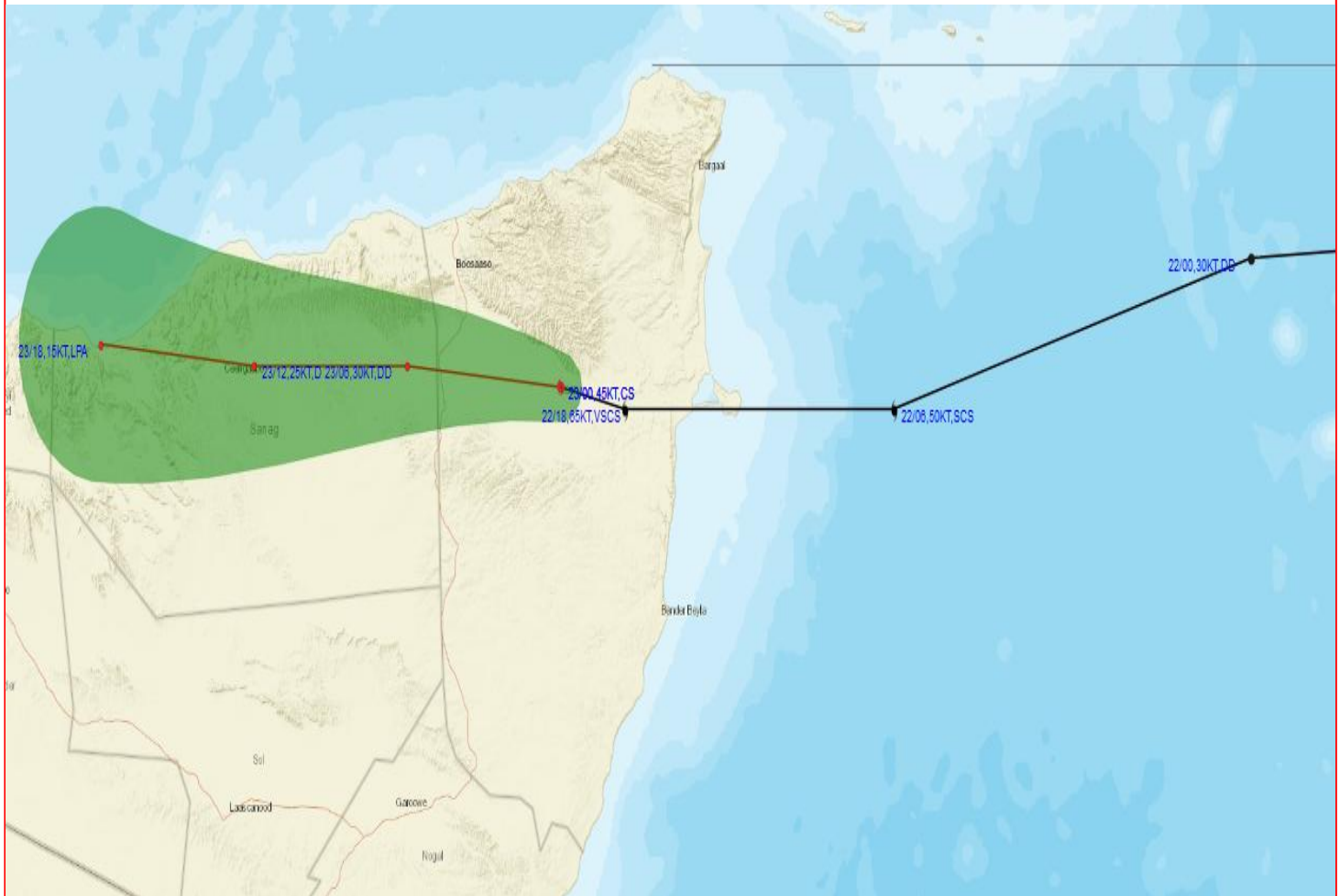
MSW (knot/kmph)	Impact	Action
28-33 (52-61)	Very rough seas	Total suspension of fishing operations
34-49 (62-91)	High to very high seas	Total suspension of fishing operations
50-63 (92-117)	Very high seas	Total suspension of fishing operations
≥ 64 (≥118)	Phenomenal	Total suspension of fishing operations

Spatial rainfall distribution: Isolated: ≤25%, A few: 26-50%, Many: 51-75%, Most: 76-100%

Rainfall amount (mm): Heavy rain: 64.5 – 115.5, Very heavy rain: 115.6 – 204.4, Extremely heavy rain: 204.5 or more.



OBSERVED AND FORECAST TRACK ALONGWITH CONE OF UNCERTAINTY OF CYCLONIC STORM GATI OVER NORTH SOMALIA BASED ON 0000UTC OF 23RD Nov, 2020



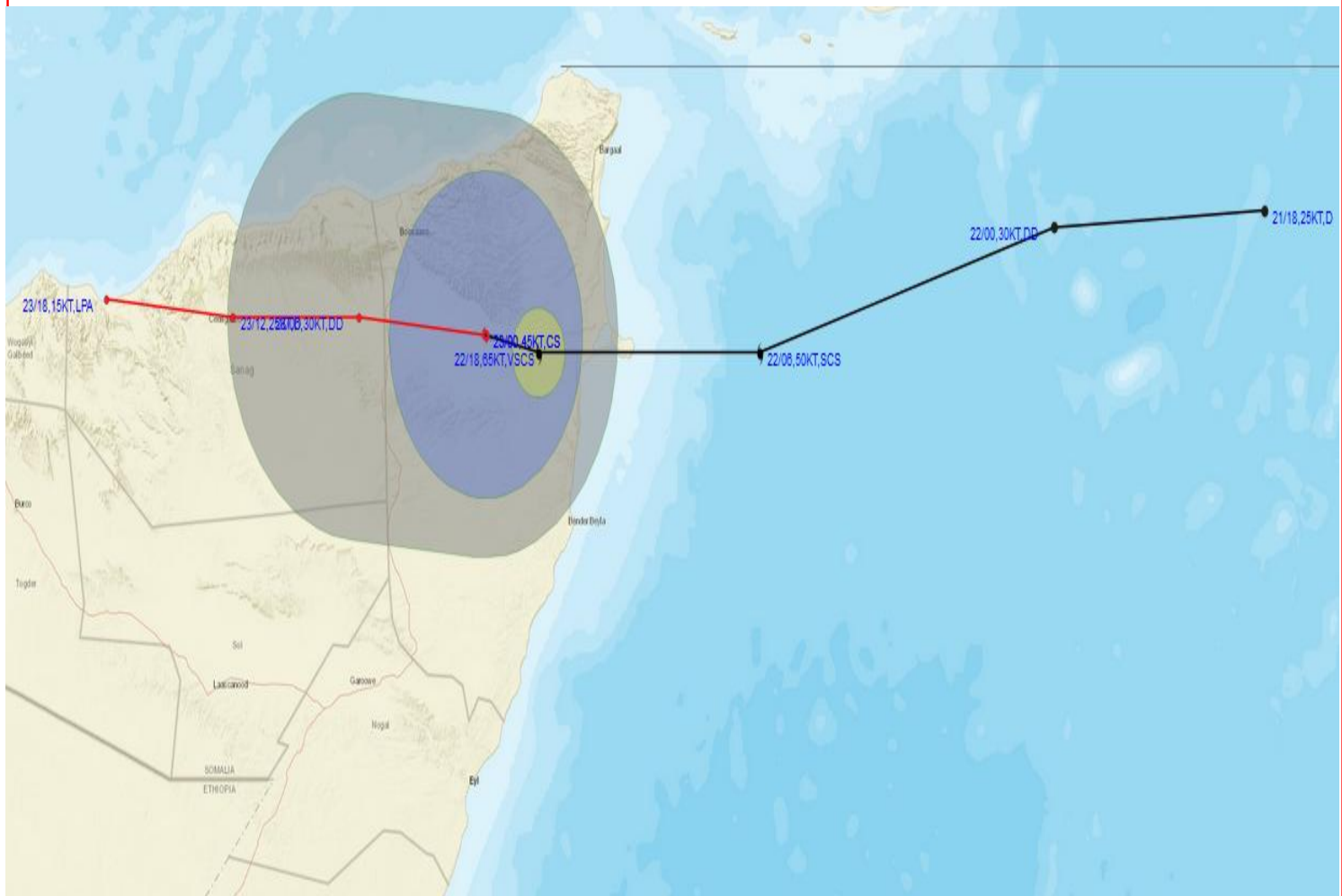
DATE/TIME IN UTC
IST=UTC + 0530
L: LOW PRESSURE AREA
WML: WELL MARKED LOW PRESSURE AREA
D: DEPRESSION (17-27 KT)
DD: DEEP DEPRESSION (28-33 KT)
CS: CYCLONIC STORM (34-47 KT)
SCS: SEVERE CYCLONIC STORM (48-63KT)
VSCS: VERY SEVERE CYCLONIC STORM (64-89 KT)
ESCS: EXTREMELY SEVERE CYCLONIC STORM (90-119 KT)
SuCS: SUPER CYCLONIC STORM (≥ 120 KT)

-  LESS THAN 34 KT
-  34-47 KT
-  ≥ 48 KT
-  OBSERVED TRACK
-  FORECAST TRACK
-  CONE OF UNCERTAINTY

Spatial rainfall distribution: Isolated: $\leq 25\%$, A few: 26-50%, Many: 51-75%, Most: 76-100%
Rainfall amount (mm): Heavy rain: 64.5 – 115.5, Very heavy rain: 115.6 – 204.4, Extremely heavy rain: 204.5 or more.



OBSERVED AND FORECAST TRACK ALONG WITH QUADRANT WIND DISTRIBUTION OF CYCLONIC STORM GATI OVER NORTH SOMALIA BASED ON 0000UTC OF 23RD Nov, 2020



DATE/TIME IN UTC
IST=UTC + 0530
L: LOW PRESSURE AREA
WML: WELL MARKED LOW PRESSURE AREA
D: DEPRESSION (17-27 KT)
DD: DEEP DEPRESSION (28-33 KT)
CS: CYCLONIC STORM (34-47 KT)
SCS: SEVERE CYCLONIC STORM (48-63KT)
VSCS: VERY SEVERE CYCLONIC STORM (64-89 KT)
ESCS: EXTREMELY SEVERE CYCLONIC STORM (90-119 KT)
SuCS: SUPER CYCLONIC STORM (≥ 120 KT)

● LESS THAN 34 KT
● 34-47 KT
● ≥ 48 KT
— OBSERVED TRACK
— FORECAST TRACK
▲ CONE OF UNCERTAINTY
AREA OF MAXIMUM SUSTAINED WIND SPEED:
28-33 KT (52-61 KMPH)
34-49 KT (62-91 KMPH)
50-63 KT (92-117 KMPH)
 ≥ 64 KT (≥ 118 KMPH)

IMPACT OVER THE SEA

MSW (knot/kmph)	Impact	Action
28-33 (52-61)	Very rough seas	Total suspension of fishing operations
34-49 (62-91)	High to very high seas	Total suspension of fishing operations
50-63 (92-117)	Very high seas	Total suspension of fishing operations
≥ 64 (≥ 118)	Phenomenal	Total suspension of fishing operations

Spatial rainfall distribution: Isolated: $\leq 25\%$, A few: 26-50%, Many: 51-75%, Most: 76-100%

Rainfall amount (mm): Heavy rain: 64.5 – 115.5, Very heavy rain: 115.6 – 204.4, Extremely heavy rain: 204.5 or more.