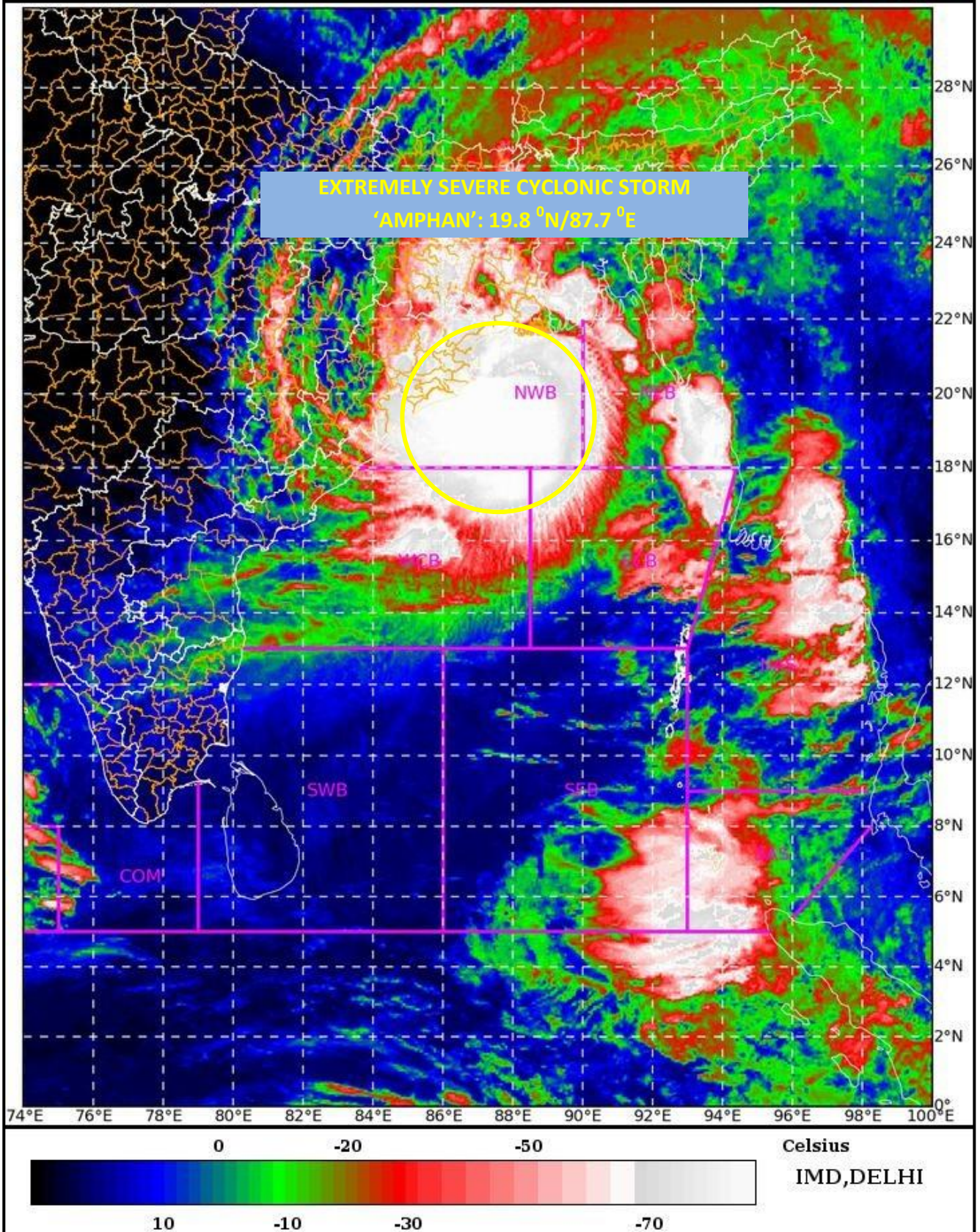


SAT : INSAT-3D IMG 20-05-2020/(0300 to 0326) GMT
 IMG_TIR1_TEMP 10.8 um 20-05-2020/(0830 to 0856) IST
 L1C Mercator



Legend: WCB – Westcentral Bay of Bengal

Spatial rainfall distribution: Isolated: <25%, A few: 26-50%, Many: 51-75%, Most: 76-100%
 Rainfall amount (mm): Heavy rain: 64.5 – 115.5, Very heavy rain: 115.6 – 204.4, Extremely heavy rain: 204.5 or more.

NWB – Northwest Bay of Bengal

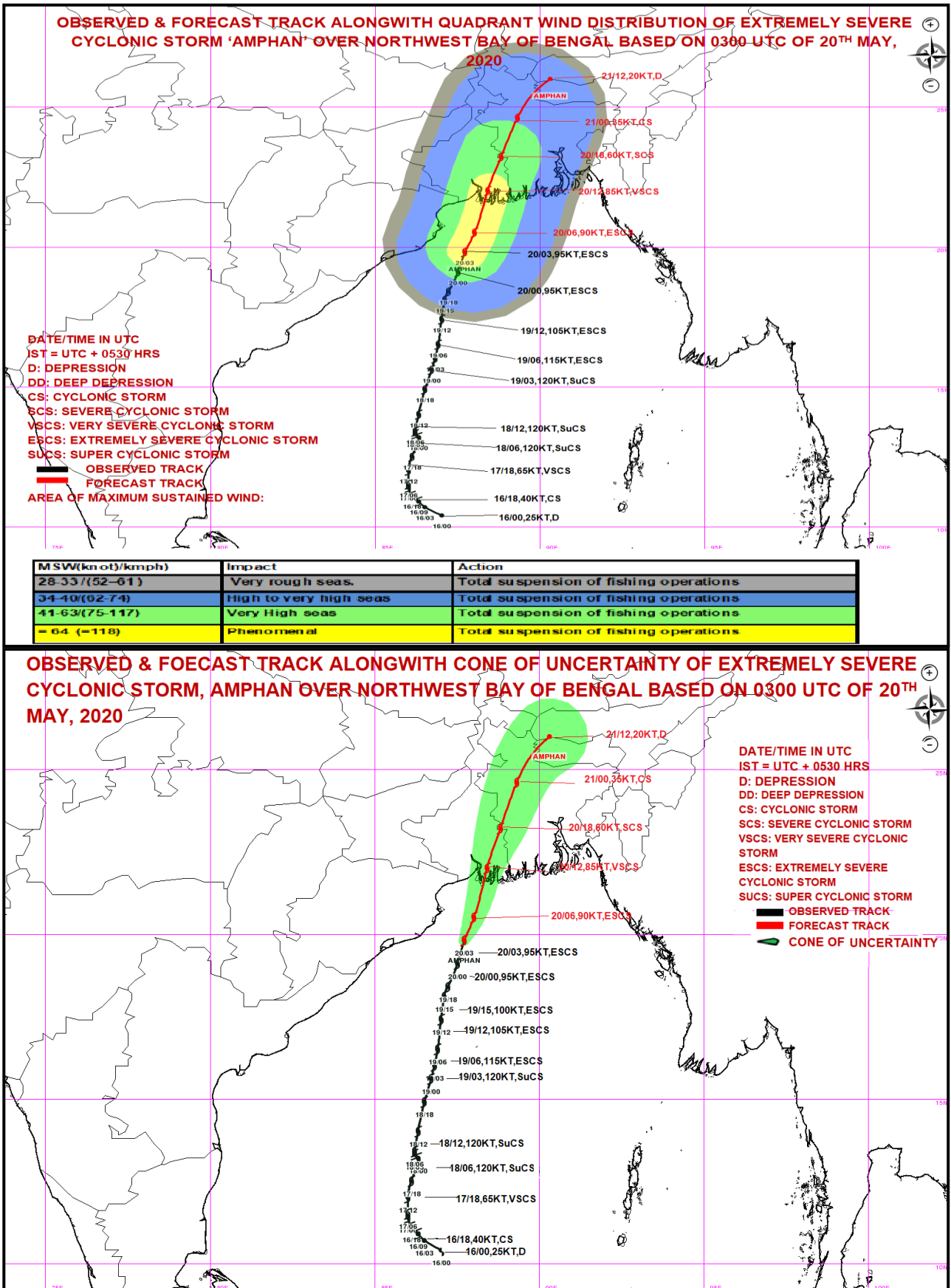
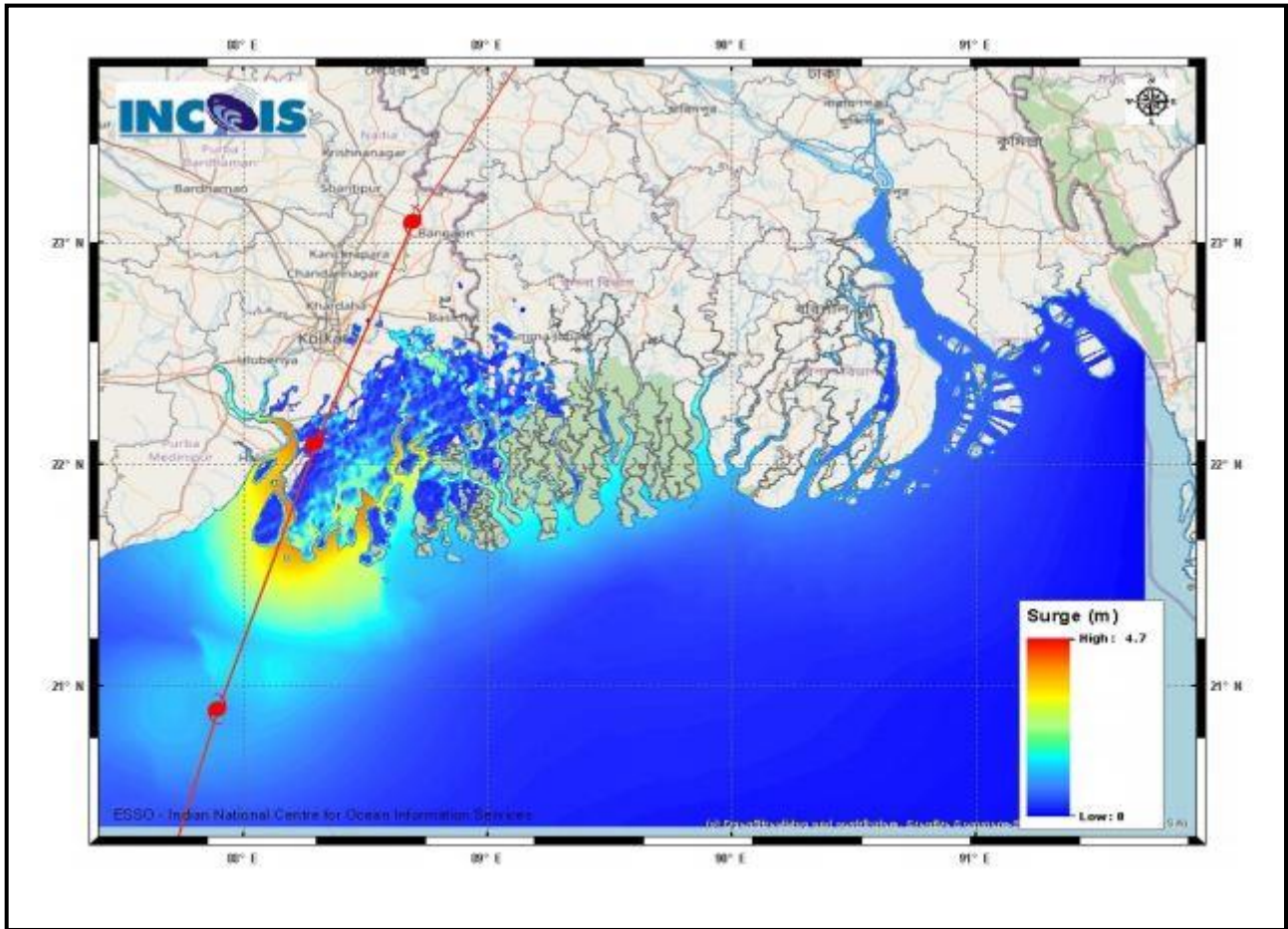


Figure: Storm Surge forecast from INCOIS issued at 0818 IST of 20th May 2020

Spatial rainfall distribution: Isolated: <25%, A few: 26-50%, Many: 51-75%, Most: 76-100%
 Rainfall amount (mm): Heavy rain: 64.5 – 115.5, Very heavy rain: 115.6 – 204.4, Extremely heavy rain: 204.5 or more.



Storm Surge of about 4-5 meters above Astronomical Tide is likely to inundate low lying areas of south & north 24 Parganas and about 3-4 meters over the low lying areas of East Medinipur District of West Bengal during the time of Landfall.

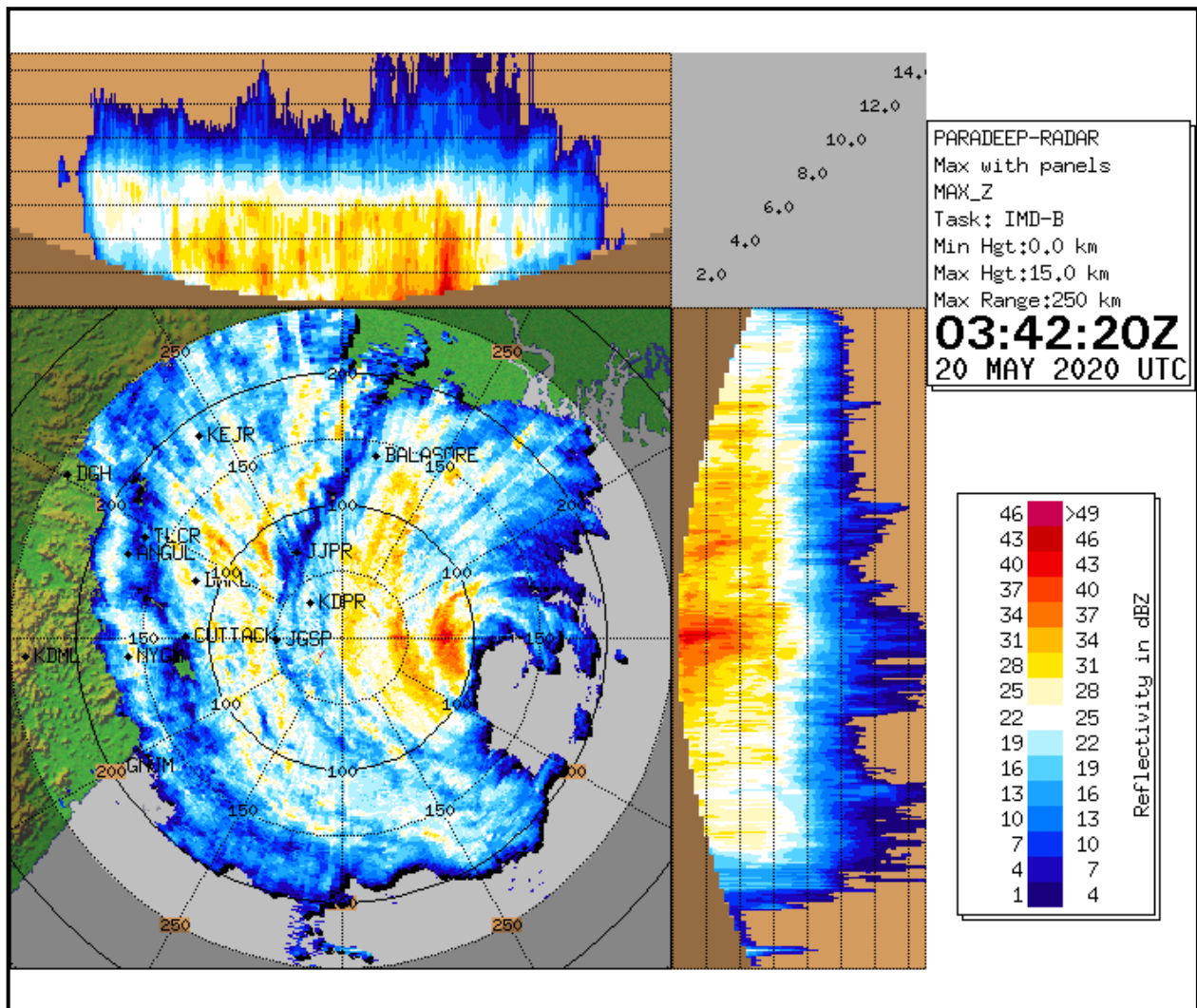
STORM SURGE HEIGHT INFORMATION:

* The below listed surge heights are over and above astronomical tide.

MANDAL/TALUK	DISTRICT	STATE / UNION TERRITORY	NEAREST PLACE OF HABITATION	* STORM SURGE (m)	* EXPECTED INUNDATION EXTENT (km)
Bhangar-I	South 24 Parganas	West Bengal	Bhangar-I	0.5-4.7	Around 15
Basirhat	North 24 Parganas	West Bengal	Basirhat	0.5-4.0	Around 10
Diamond Harbour	South 24 Parganas	West Bengal	Daimond Harbor	0.5-3.5	Around 15
Bagnan-II	Haora	West Bengal	Bagnan-II	0.5-1.8	Around 0.44
Mahisadal	Medhinipur	West Bengal	Tentul Berya	0.5-1.0	Around 0.4
Nandigram-I	Medhinipur	West Bengal	Nakchira Chara	0.5-0.8	Around 0.2
off Haldia	Purba Medhinipur	West Bengal	Navachar Island	0.5-1.5	Around 0.5
Sutahata-I	Medinipur	West Bengal	Maniruddin Chara	0.5-1.5	Around 0.4
Sutahata-II	Medinipur	West Bengal	Haldia	0.5-1.5	Around 0.3
Digha	Purba Medhinipur	West Bengal	Digha	0.5-0.7	Around 0.3
Tamluk	East Midnapore	West Bengal	Tamluk	0.5-1.8	Around 0.3
Bhadrak	Bhadrak	Odisha	Mohanpur	0.5-1.5	Around 0.8
Kendrapara	Kendraparha	Odisha	Baligarh	0.5-0.8	Around 2.8
Baleshwar	Baleshwar	Odisha	Sahapur	0.5-0.8	Around 0.8

Spatial rainfall distribution: Isolated: <25%, A few: 26-50%, Many: 51-75%, Most: 76-100%
Rainfall amount (mm): Heavy rain: 64.5 – 115.5, Very heavy rain: 115.6 – 204.4, Extremely heavy rain: 204.5 or more.

Figure: Reflectivity of Paradip Doppler Weather Radar at 0342 UTC of 20th May 2020



Spatial rainfall distribution: Isolated: <25%, A few: 26-50%, Many: 51-75%, Most: 76-100%
 Rainfall amount (mm): Heavy rain: 64.5 – 115.5, Very heavy rain: 115.6 – 204.4, Extremely heavy rain: 204.5 or more.