

SAT : INSAT-3D IMG

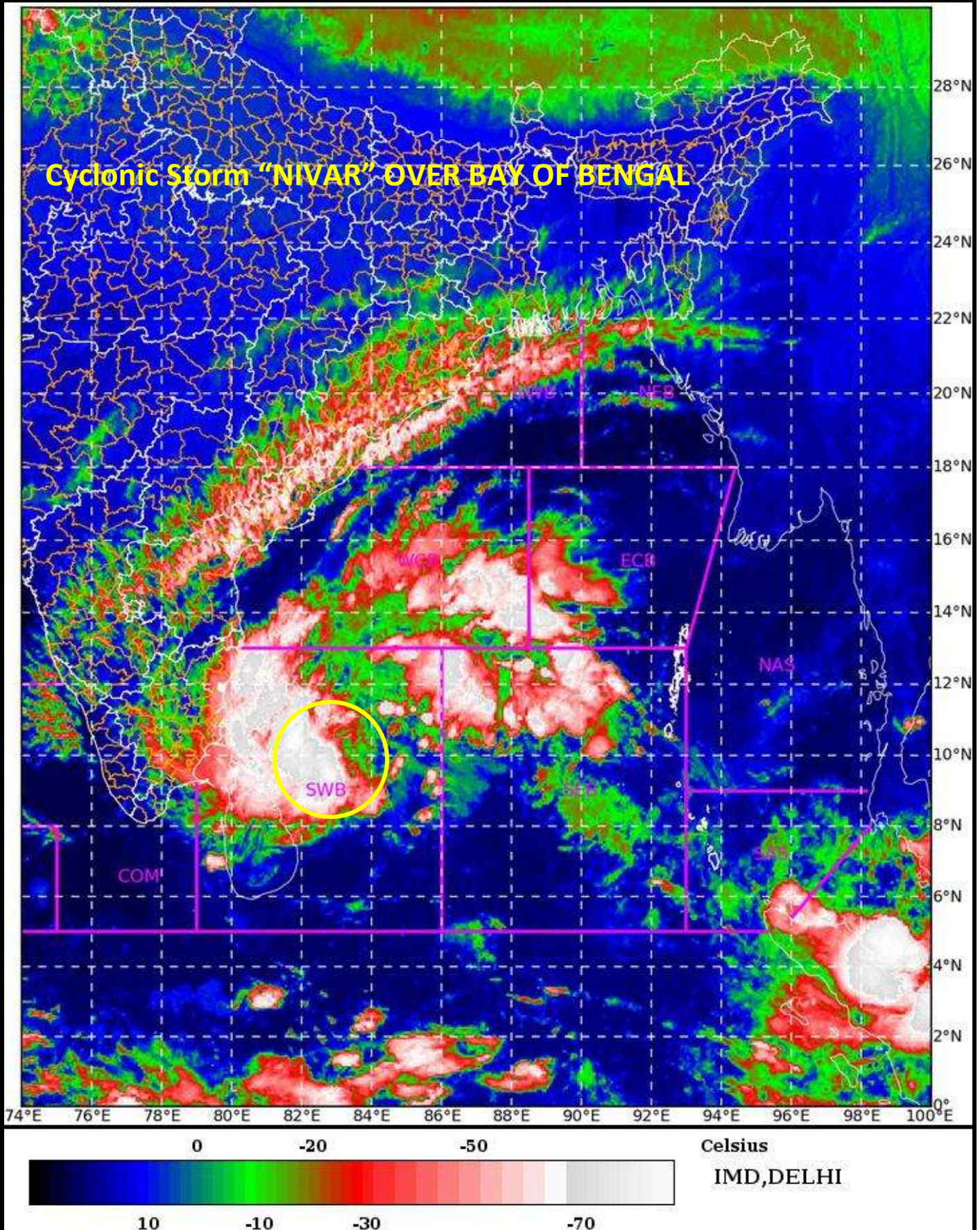
24-11-2020/(0030 to 0057) GMT

IMG\_TIR1\_TEMP 10.8 um

24-11-2020/(0600 to 0627) IST



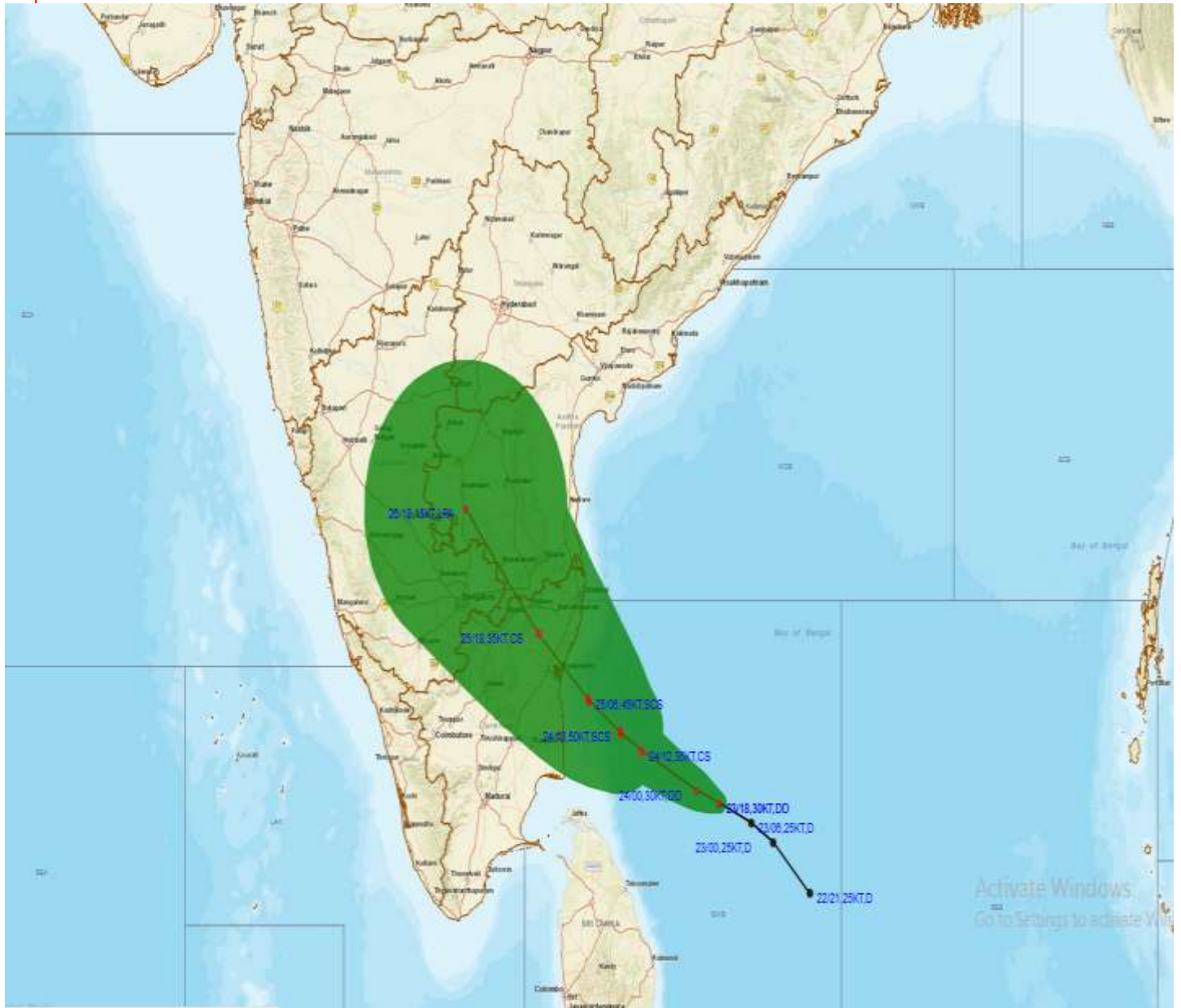
L1C Mercator



Spatial rainfall distribution: Isolated:  $\leq 25\%$ , A few: 26-50%, Many: 51-75%, Most: 76-100%  
Rainfall amount (mm): Heavy rain: 64.5 – 115.5, Very heavy rain: 115.6 – 204.4, Extremely heavy rain: 204.5 or more.



# OBSERVED AND FORECAST TRACK ALONGWITH CONE OF UNCERTAINTY OF CYCLONIC STORM "NIVAR" OVER SOUTHWEST BAY OF BENGAL BASED ON 0000 UTC OF 24<sup>TH</sup> NOVEMBER, 2020.



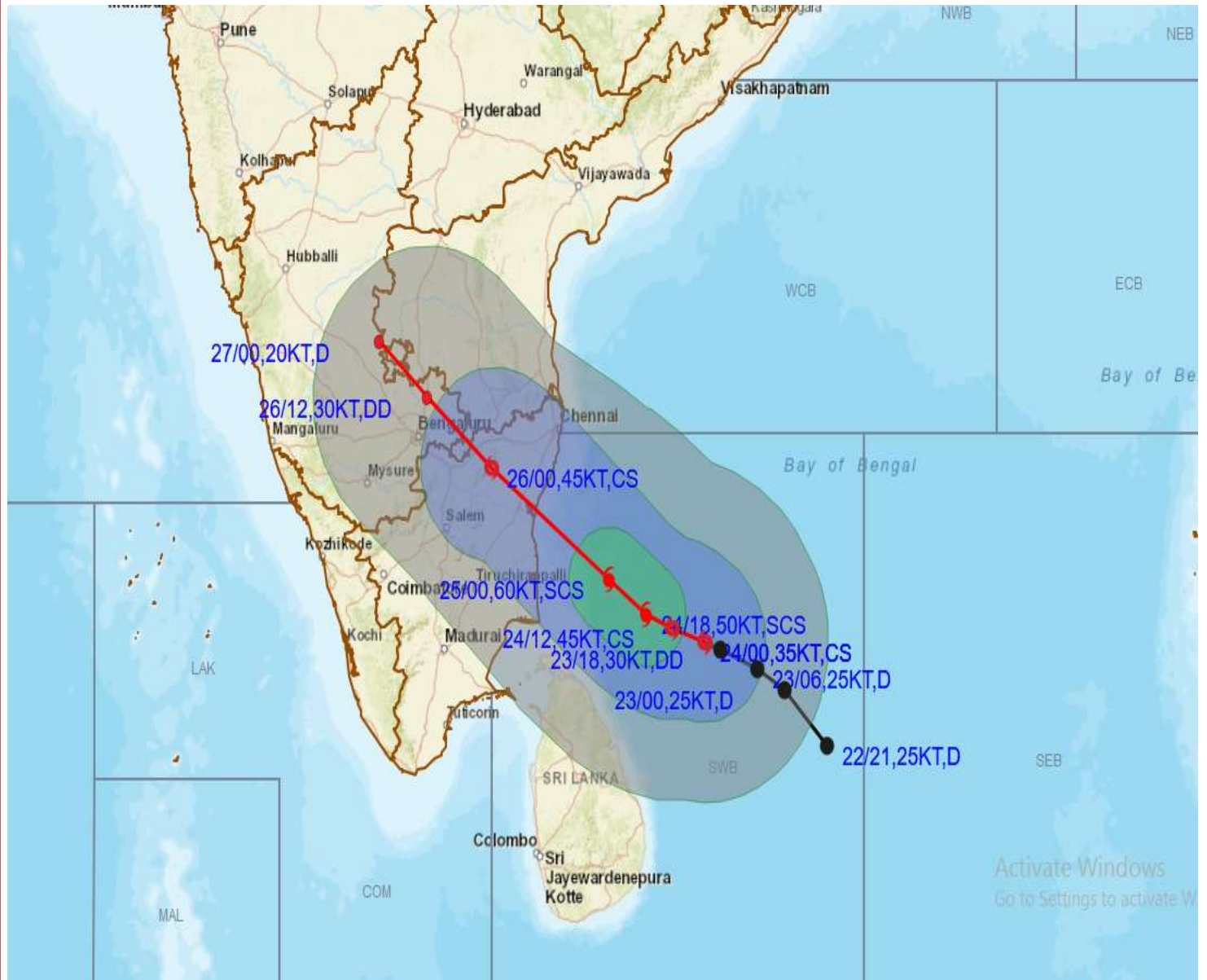
DATE/TIME IN UTC  
 IST=UTC + 0530  
 L: LOW PRESSURE AREA  
 WML: WELL MARKED LOW PRESSURE AREA  
 D: DEPRESSION (17-27 KT)  
 DD: DEEP DEPRESSION (28-33 KT)  
 CS: CYCLONIC STORM (34-47 KT)  
 SCS: SEVERE CYCLONIC STORM (48-63KT)  
 VSCS: VERY SEVERE CYCLONIC STORM (64-89 KT)  
 ESCS: EXTREMELY SEVERE CYCLONIC STORM (90-119 KT)  
 SuCS: SUPER CYCLONIC STORM (≥20 KT)

- LESS THAN 34 KT
- 34-47 KT
- ≥ 48 KT
- OBSERVED TRACK
- FORECAST TRACK
- CONE OF UNCERTAINTY

Spatial rainfall distribution: Isolated: ≤25%, A few: 26-50%, Many: 51-75%, Most: 76-100%  
 Rainfall amount (mm): Heavy rain: 64.5 – 115.5, Very heavy rain: 115.6 – 204.4, Extremely heavy rain: 204.5 or more.



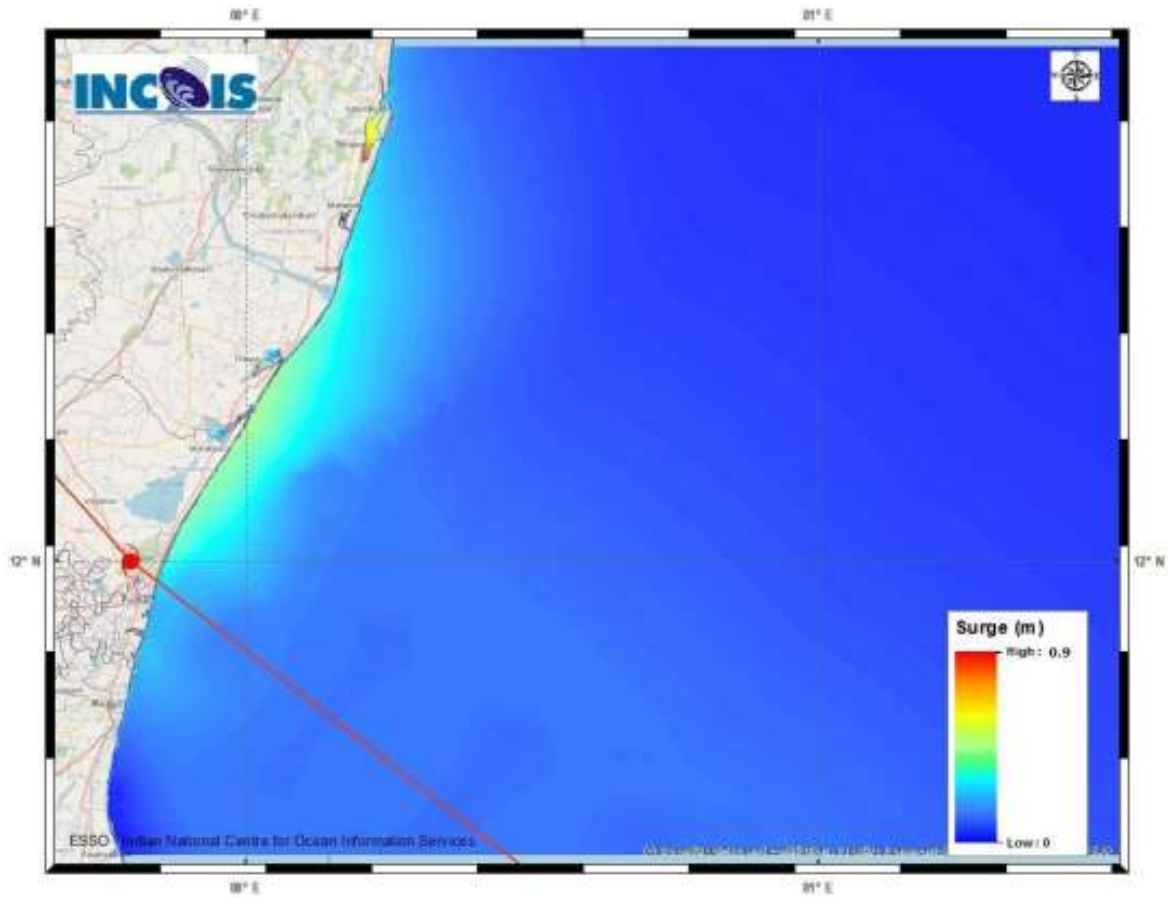
# OBSERVED AND FORECAST TRACK OF CYCLONIC STORM "NIVAR" OVER SOUTHWEST BAY OF BENGAL ALONGWITH QUADRANT WIND DISTRIBUTION BASED ON 0000 UTC OF 24<sup>TH</sup> NOV., 2020



<p><b>DATE/TIME IN UTC</b>  <b>IST=UTC + 0530</b>  <b>L: LOW PRESSURE AREA</b>  <b>WML: WELL MARKED LOW PRESSURE AREA</b>  <b>D: DEPRESSION (17-27 KT)</b>  <b>DD: DEEP DEPRESSION (28-33 KT)</b>  <b>CS: CYCLONIC STORM (34-47 KT)</b>  <b>SCS: SEVERE CYCLONIC STORM (48-63KT)</b>  <b>VSCS: VERY SEVERE CYCLONIC STORM (64-89 KT)</b>  <b>ESCS: EXTREMELY SEVERE CYCLONIC STORM (90-119 KT)</b>  <b>SuCS: SUPER CYCLONIC STORM (≥20 KT)</b></p>	<ul style="list-style-type: none"> <li>● LESS THAN 34 KT</li> <li>○ 34-47 KT</li> <li>◐ ≥ 48 KT</li> <li>— OBSERVED TRACK</li> <li>— FORECAST TRACK</li> <li>◀ CONE OF UNCERTAINTY</li> <li><b>AREA OF MAXIMUM SUSTAINED WIND SPEED:</b></li> <li>■ 28-33 KT (52-61 KMPH)</li> <li>■ 34-49 KT (62-91 KMPH)</li> <li>■ 50-63 KT (92-117 KMPH)</li> <li>■ ≥ 64 KT (≥118 KMPH)</li> </ul>
--	--

IMPACT OVER THE SEA		
MSW (knot/kmph)	Impact	Action
28-33 (52-61)	Very rough seas	Total suspension of fishing operations
34-49 (62-91)	High to very high seas	Total suspension of fishing operations
50-63 (92-117)	Very high seas	Total suspension of fishing operations
≥ 64 (≥118)	Phenomenal	Total suspension of fishing operations

Spatial rainfall distribution: Isolated: ≤25%, A few: 26-50%, Many: 51-75%, Most: 76-100%  
 Rainfall amount (mm): Heavy rain: 64.5 – 115.5, Very heavy rain: 115.6 – 204.4, Extremely heavy rain: 204.5 or more.



**Figure: Storm surge map**

**STORM SURGE HEIGHT INFORMATION:**

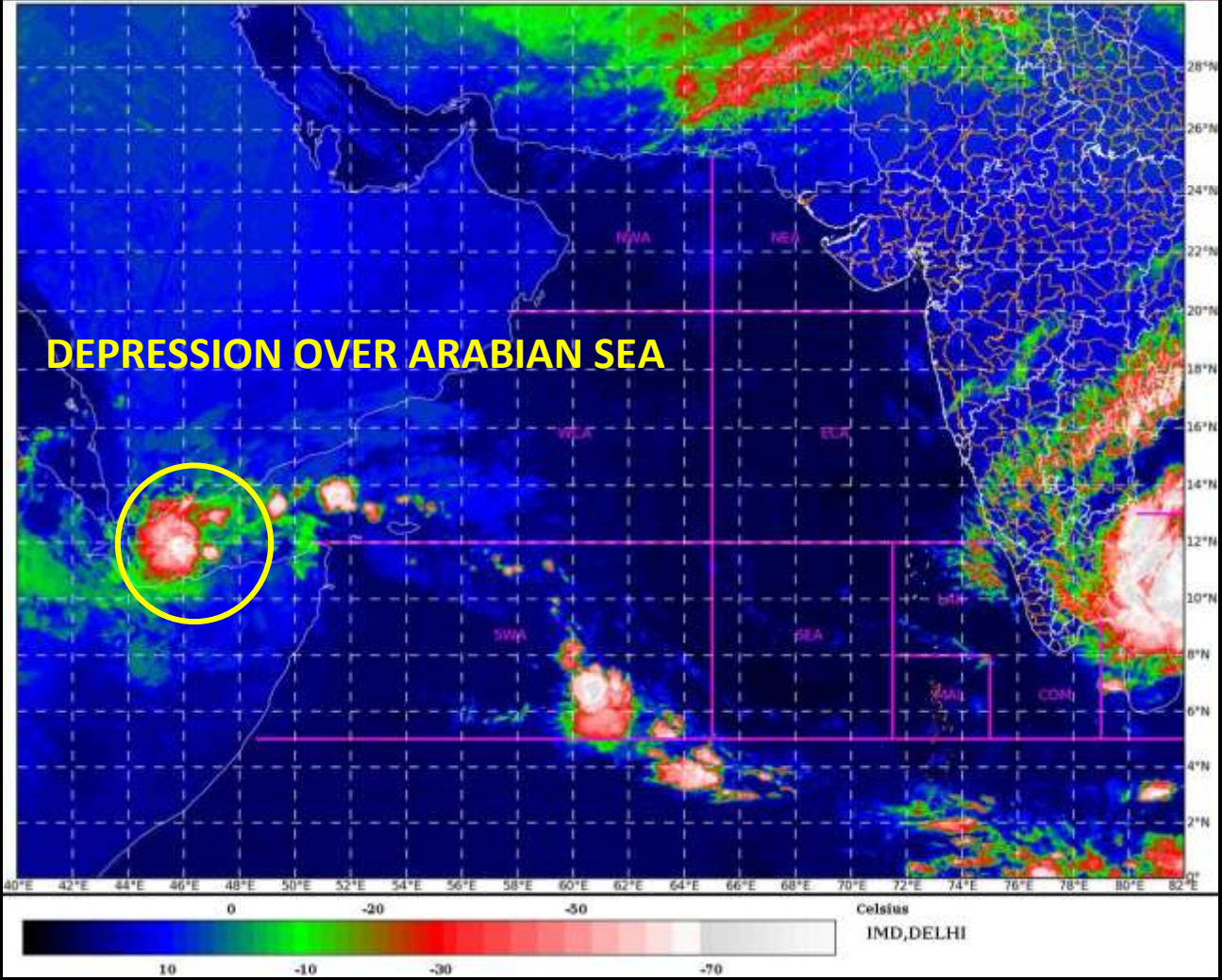
\* The below listed surge heights are over and above astronomical tide.

MANDAL/TALUK	DISTRICT	STATE / UNION TERRITORY	NEAREST PLACE OF HABITATION	STORM SURGE (m) *	EXPECTED INUNDATION EXTENT (km)
Chengalpattu	Kancheepuram	Tamil Nadu	Thiruporur	0.5-0.9	Upto 0.20
Cheythur	Kancheepuram	Tamil Nadu	Kadalur	0.3-0.4	Nil
Cuddalore	Cuddalore	Tamil Nadu	Cuddalore	0.3-0.4	Nil
Tindivanam	Viluppuram	Tamil Nadu	OZHUKARAI MUNICIPALITY	0.3-0.6	Upto 0.11
Tirutturaippundi	Nagappattinam	Tamil Nadu	Vaimedu west	0.3-0.5	Upto 0.11

Spatial rainfall distribution: Isolated: ≤25%, A few: 26-50%, Many: 51-75%, Most: 76-100%  
 Rainfall amount (mm): Heavy rain: 64.5 – 115.5, Very heavy rain: 115.6 – 204.4, Extremely heavy rain: 204.5 or more.

SAT : INSAT-3D IMG  
IMG\_TIR1\_TEMP 10.8 um  
ARABIAN\_SEA

24-11-2020/(0100 to 0126) GMT  
24-11-2020/(0630 to 0656) IST



Spatial rainfall distribution: Isolated:  $\leq 25\%$ , A few: 26-50%, Many: 51-75%, Most: 76-100%  
Rainfall amount (mm): Heavy rain: 64.5 – 115.5, Very heavy rain: 115.6 – 204.4, Extremely heavy rain: 204.5 or more.



## OBSERVED TRACK OF DEPRESSION OVER GULF OF ADEN BASED ON 0000 UTC OF 24<sup>TH</sup> NOV., 2020



**DATE/TIME IN UTC**  
**IST=UTC + 0530**  
**L: LOW PRESSURE AREA**  
**WML: WELL MARKED LOW PRESSURE AREA**  
**D: DEPRESSION (17-27 KT)**  
**DD: DEEP DEPRESSION (28-33 KT)**  
**CS: CYCLONIC STORM (34-47 KT)**  
**SCS: SEVERE CYCLONIC STORM (48-63KT)**  
**VSCS: VERY SEVERE CYCLONIC STORM (64-89 KT)**  
**ESCS: EXTREMELY SEVERE CYCLONIC STORM (90-119 KT)**  
**SuCS: SUPER CYCLONIC STORM ( $\geq 20$  KT)**

- LESS THAN 34 KT
- 34-47 KT
- $\geq 48$  KT
- OBSERVED TRACK
- FORECAST TRACK
- CONE OF UNCERTAINTY

**Spatial rainfall distribution: Isolated:  $\leq 25\%$ , A few: 26-50%, Many: 51-75%, Most: 76-100%**  
**Rainfall amount (mm): Heavy rain: 64.5 – 115.5, Very heavy rain: 115.6 – 204.4, Extremely heavy rain: 204.5 or more.**