



**BACKGROUNDERS**  
Press Information Bureau  
Government of India

## Empowering India's Annadatas

05 June, 2026

*India's agricultural sector has seen steady transformation over the last twelve years. Improvements are visible across productivity, income support, risk management, and diversification. The agriculture and allied sector GVA increased from Rs.20.9 lakh crore in 2014-15 to Rs.48.7 lakh crore in 2023-24. Foodgrain production reached 357.73 million tonnes in 2024-25, alongside expansion in horticulture and allied sectors such as livestock, fisheries, and food processing. Key initiatives have improved irrigation, expanded credit access, and strengthened insurance coverage. Market integration has improved through digital platforms and better infrastructure. Measures such as **MSP support, procurement, and distribution systems** have supported income stability and food security. Diversification into allied activities and bio energy has created additional income opportunities, reflecting a more resilient and integrated agricultural system.*

### Expanding the Scope of Farmer Empowerment

Over the past 12 years, India's agricultural sector has witnessed a comprehensive expansion in farmers' empowerment. The focus has widened beyond welfare support towards **strengthening productivity, income security, market access, infrastructure, and institutional resilience.**

Higher agricultural output, expanded irrigation, greater access to credit, stronger insurance coverage, and growth in allied sectors have contributed to this transition. Simultaneously, expanded MSP operations and procurement systems have **strengthened market assurance, ensured remunerative pricing, and supported national food security objectives.** Furthermore, digital platforms, cooperatives, food processing, and climate-resilient initiatives have created new opportunities across the agricultural value chain. These developments reflect a gradual shift towards a **more diversified, technology-driven, and farmer-centric agricultural system.**

### The Rise of India's Agricultural Sector: Growth, Investment and Resilience

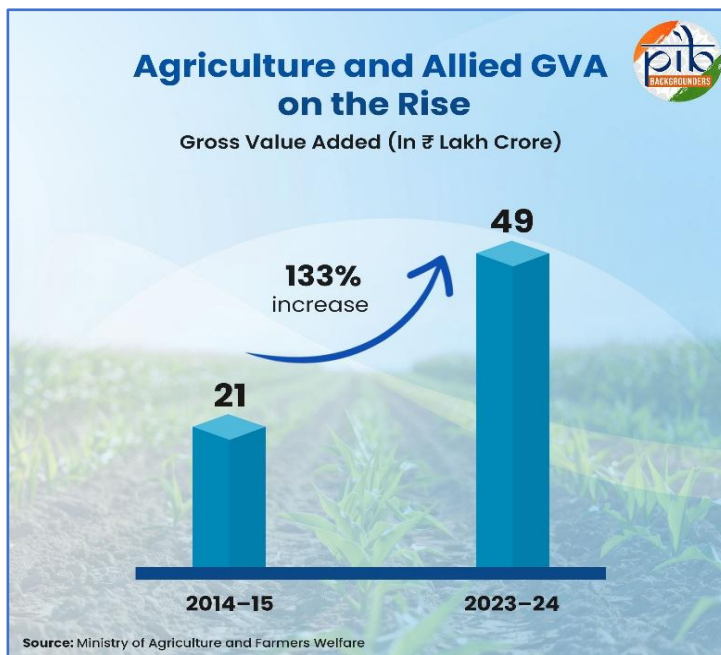
Over the past decade, India's agriculture and allied sectors have witnessed significant expansion, supported by sustained policy focus and increased public investment. Targeted

interventions have contributed to rising agricultural output, improved productivity, and enhanced resilience of the rural economy.

### A Decade of Growth in Agriculture and Allied Gross Value Added

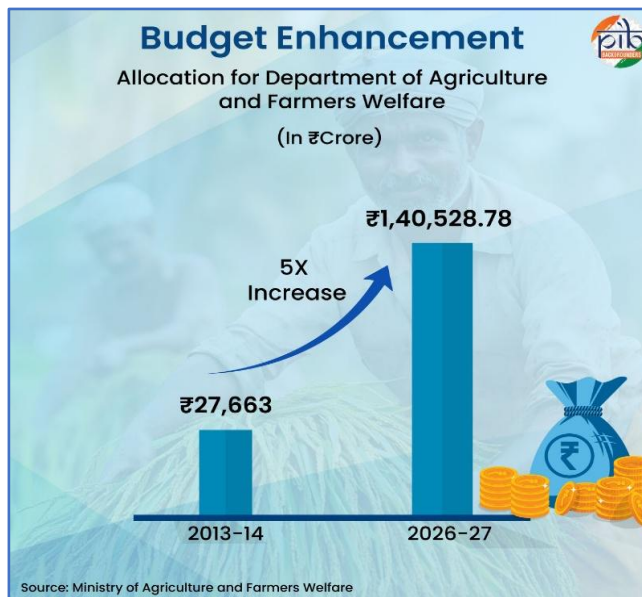
The agriculture and allied sector accounts for about 18 percent of total Gross Value Added (GVA). The GVA of this sector increased significantly from Rs.20.9 lakh crore in 2014-15 to Rs.48.7 lakh crore in 2023-2024. During this period, the sector registered a compound annual growth rate (CAGR) of 8.83 percent at current prices.

Growth has also been supported by improvements within the crop segment. The GVA of crops rose from Rs. 12,92,874 crore in 2014-15 to Rs. 26,52,891 crore in 2023-24.



### Enhanced Financial Support for Agriculture

Public investment in the agricultural sector has increased substantially over this period. Budgetary allocation for the Department of Agriculture and Farmers Welfare increased from Rs.27,663 crore in 2013-14 to Rs.1,40,528.78 crore for 2026-27. This significant rise reflects the sustained policy support and continued investment in agricultural infrastructure, strengthening overall agricultural expansion.



### Growth Momentum in Foodgrain Production

Total foodgrain production has increased from 265.05 million tonnes in 2013-14 to 357.73 million tonnes in 2024-25. The growth has been driven by higher production of rice, wheat, maize, and coarse cereals. This also included millets, now promoted as Shree Anna. This growth has been supported by the National Food Security and Nutrition Mission (NFSNM).

The mission promotes higher production of rice, wheat, pulses, and coarse cereals. It supports improved seeds, better agronomic practices, and technology adoption.

- Rice touched a record production of **150.18 Mt** in **2024-25**, a **42.38 percent** increase compared to **2014-15 (105.48 Mt)**. India became the **world's largest rice producer**.
- Wheat recorded the highest production of **117.94 Mt** in **2024-25**, rising over **36 percent** since **2014-15**.
- Maize production also reached **43.40 Mt** in **2024-25**, an increase of around **79 percent** from **2014-15 (24.17 Mt)**.

Efforts towards self-reliance are also visible in the oilseeds sector. Oilseeds registered the highest production of **42.99 Mt (2024-25)**, which is **56 percent** higher than **2014-15 (27.51 Mt)**.

Edible oil import dependence declined from **63.2 percent** in **2015-16** to **56.25 percent** in **2023-24**,

indicating gradual progress. During this period, the area under oilseeds increased by over **18 percent**. Production rose nearly **55 percent**, while productivity increased about **31 percent**.

The horticulture sector has also emerged as a key contributor to agricultural growth. It accounts for nearly **37 percent** of the **Gross Value Output** within the crop sector. Production has increased from **280.70 million tonnes** in **2013-14** to **369.05 million tonnes** in **2024-25**. This expansion indicates diversification towards high-value crops, supported by improved practices and market demand.

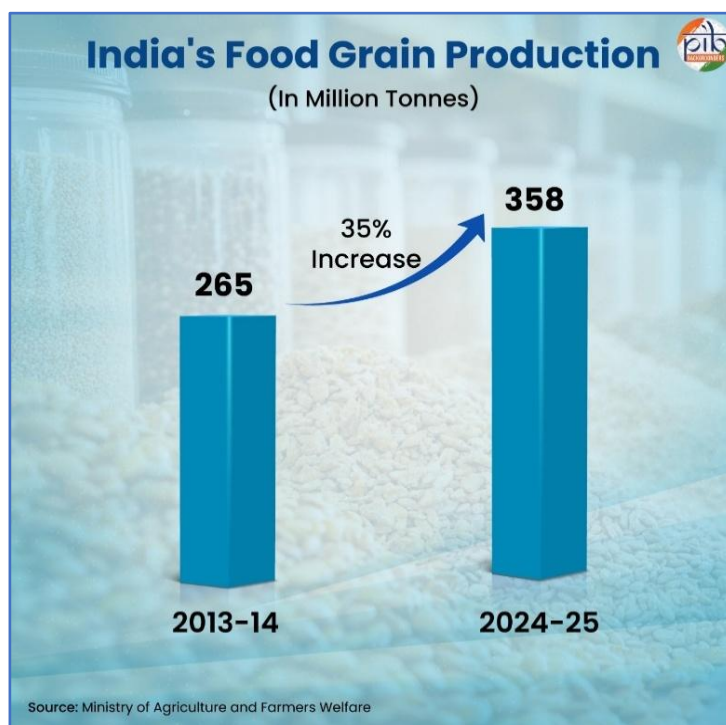
Alongside these sectoral improvements, agricultural policy has steadily expanded to strengthen production systems, support farmers, and build long-term resilience.

## A Roadmap for Reforms: Strengthening India's Agricultural Policy (2014-2026)

Over the past twelve years, agricultural policy has expanded across irrigation, soil health, markets, risk mitigation, and infrastructure. A series of focused initiatives has shaped this transition towards a more integrated and farmer-centric agricultural framework.

Initial reforms concentrated on improving productivity and resource efficiency. **Pradhan Mantri Krishi Sinchayee Yojana (PMKSY)** expanded irrigation coverage and promoted water-use efficiency. The **Soil Health Card Scheme** enabled scientific nutrient management. **Rashtriya Gokul Mission** supported indigenous breeds and dairy productivity.

The focus then widened to reducing production risks and improving market access. **Pradhan Mantri Fasal Bima Yojana (PMFBY)** expanded crop insurance coverage, while **e-NAM**



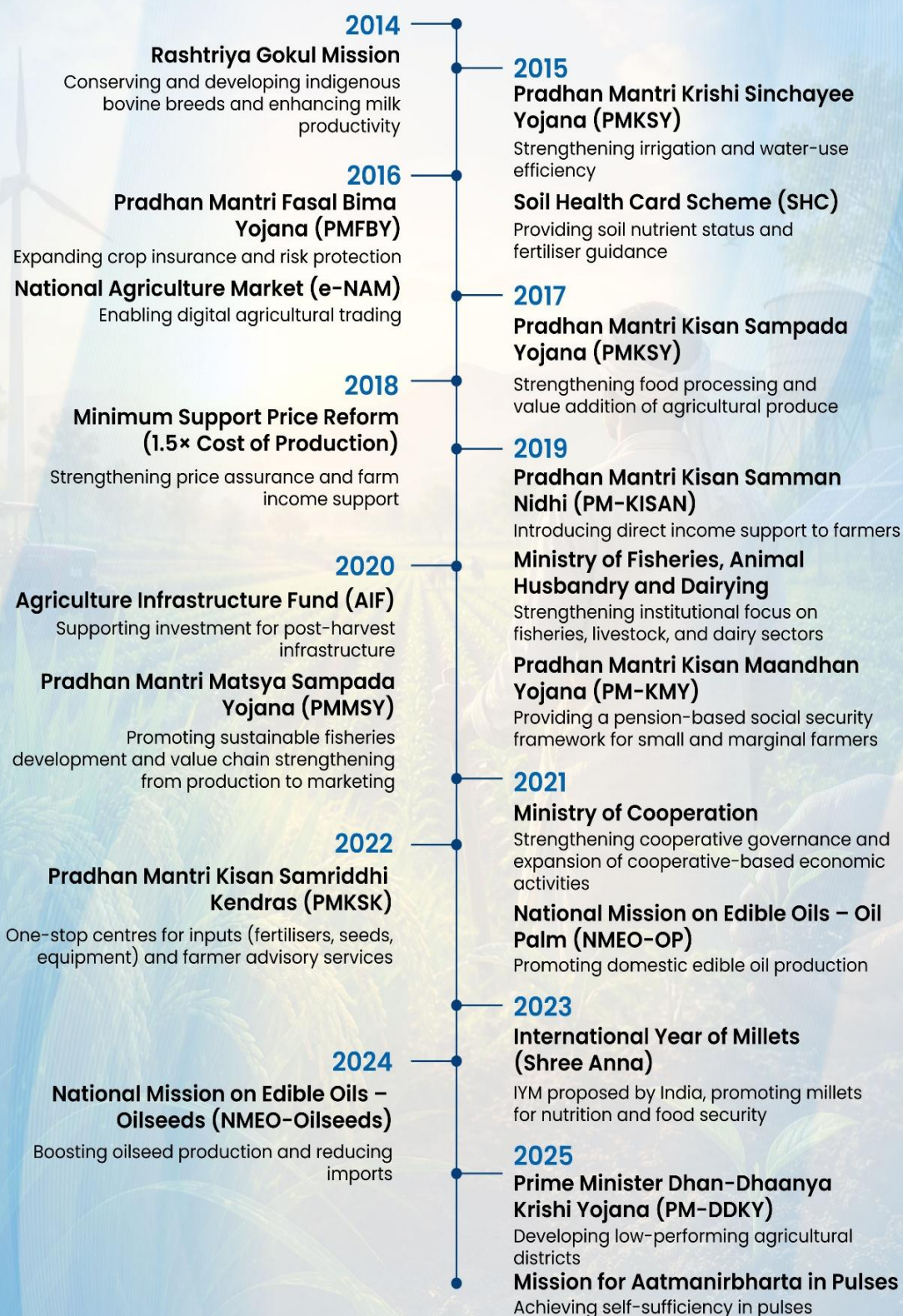
enabled digital agricultural trading and wider market integration. The **MSP reform** of 2018 strengthened price assurance by fixing MSP at 1.5 times the cost of production.

Farmer income support and social security gained greater emphasis in subsequent years. **Pradhan Mantri Kisan Samman Nidhi (PM-KISAN)** introduced direct income support. **Pradhan Mantri Kisan Maandhan Yojana (PM-KMY)** created a pension framework for small and marginal farmers. **Agriculture Infrastructure Fund (AIF)** and **PM Kisan Sampada Yojana (PMKSY)** increased investment in post-harvest infrastructure and value addition.

Institutional reforms and cooperative-led development also gained momentum. The Ministry of Cooperation strengthened cooperative governance and expanded cooperative-based economic activities.

Further, recent initiatives have focused on diversification and self-reliance. **National Mission on Edible Oils- Oil Palm (NMEO-OP)** and **National Mission on Edible Oils-Oilseeds (NMEO-OS)** promoted domestic edible oil production. **Pradhan Mantri Kisan Samridhi Kendras (PMKSK)** improved access to inputs and advisory services. Newer interventions, such as the **Pradhan Mantri-Dhan Dhaanya Krishi Yojana (PM-DDKY)**, aim to strengthen productivity in key crops. **The Mission for Aatmanirbharta in Pulses** focuses on reducing import dependence and improving domestic production.

# 12 years of Policy Milestones in Agriculture and Allied Sector



Source: Ministry of Agriculture and Farmers Welfare

## Empowering the Indian Farmer: Financial Stability and Social Security

Over the past twelve years, government initiatives expanded across the agricultural cycle, from cultivation and insurance coverage to procurement. These interventions also strengthened direct income assistance for farmers.

### Institutionalizing Farmer Income Support through Direct Benefit Transfers

The Pradhan Mantri Kisan Samman Nidhi (PM-KISAN) provides assured income support to small and marginal farmers. It ensures meeting agricultural and household expenses while reducing dependence on informal credit sources.

Under the scheme, each eligible farmer family receives an annual financial assistance of Rs. 6,000. The amount is transferred in three equal instalments of Rs. 2,000 through the Direct Benefit Transfer (DBT) mechanism.

Since its inception in March 2016, PM-KISAN has disbursed over Rs. 4.28 lakh crore through 22 instalments. This has benefitted more than 9.44 crore farmer families nationwide. Over 25 percent of benefits have accrued to women beneficiaries, reflecting the scheme's inclusive outreach across rural households.



The scheme has emerged as one of the world's largest DBT initiatives for farmers. It reflects a large-scale institutional mechanism for delivering income assistance directly to beneficiaries.

### Securing the Harvest through Crop Insurance and Risk Mitigation

Agriculture remains highly vulnerable to droughts, floods, cyclones, pest attacks, and other natural uncertainties. Such risks can cause significant income losses and disrupt agricultural continuity.

Pradhan Mantri Fasal Bima Yojana (PMFBY) provides farmers with a simple, affordable, and comprehensive crop insurance system. PMFBY covers the entire crop cycle, including pre-sowing and post-harvest losses. The scheme follows the principle of "One Nation, One Crop, One Premium", ensuring uniform premium rates across the country.

To strengthen grievance redressal mechanisms under PMFBY, the **Krishi Rakshak Portal and Helpline (KRPH) number 14447** have been launched. The grievance redressal mechanism is supported by around **500 executives nationwide**.

More than **4 crore farmers** are insured annually under the scheme, reflecting its wide outreach and growing acceptance among cultivators. Since 2016-17, **92.46 crore farmer applications** have been insured. The **claims worth Rs.1.96 lakh crore** have been disbursed up to 31<sup>st</sup> December 2025, benefiting around **24.31 crore farmers**. Thus, strengthening farmers' ability to cope with uncertainties and continue agricultural activities with greater resilience and confidence.

**Pradhan Mantri Fasal Bima Yojana (PMFBY)**  
Since 2016-17

**92.5 crore** Farmer applications insured under the Pradhan Mantri Fasal Bima Yojana (PMFBY)

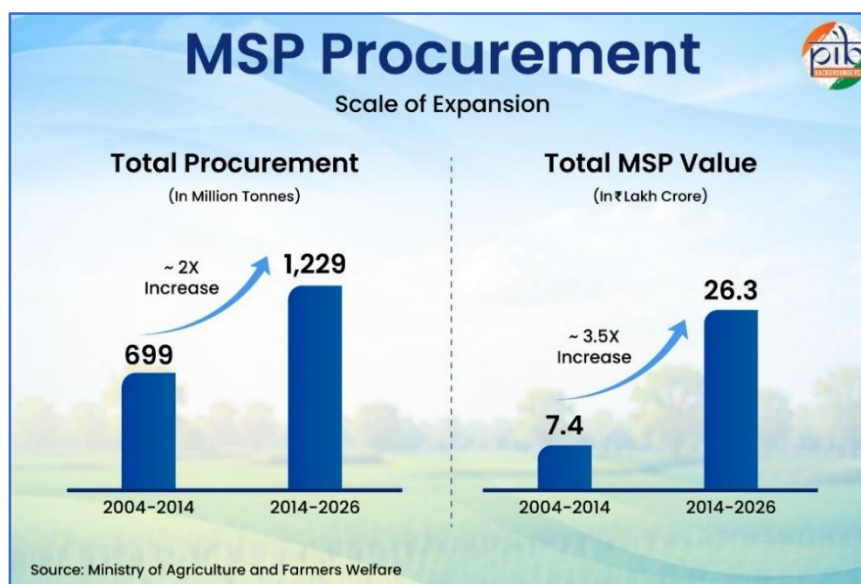
**Rs.1.96 lakh crore** Claims paid to **24.3 crore** farmers across India

Source: Ministry of Agriculture and Farmers Welfare  
Up to December 2025

### The Decadal Growth in Agricultural Procurement and MSP Value

The **Minimum Support Price (MSP)** acts as a safeguard by ensuring pre-determined prices for agricultural produce. MSPs are announced annually for **22 mandated crops**. Since 2018-19, MSPs have been fixed at a minimum of **50 percent above the cost of production**.

Public procurement expanded significantly alongside MSP support. Public procurement supports farmers by purchasing crops such as **wheat, paddy, pulses, oilseeds, and cotton** at MSP rates. Total procurement increased from **698.7 million tonnes** during 2004-2014 to **1,229.2 million tonnes** during 2014-2026. This recorded a growth of about **76 percent**. The total MSP value reached **Rs.26.32 lakh crore** from 2014-2026 (up to February 2026). This was **3.5 times higher** than the previous decade, i.e., **Rs. 7.41 lakh crore** from 2004-2014. The growth indicates the scale of market support available to farmers.



Among Kharif crops, Ragi recorded the highest MSP growth of 236 percent since 2014-15. This was followed by Nigerseed at 179 percent and Jowar (Hybrid) at 163 percent. Among Rabi and commercial crops, Jute recorded a growth of 147 percent, while Masur registered an increase of 128 percent. These trends reflect sustained efforts to strengthen assured pricing across diverse crop categories.

**Minimum Support Prices for all Kharif Crops for Marketing Season 2026-27:**

S.No.	Crop	MSP 2014-15 (Rs. /quintal)	MSP 2026-27 (Rs. /quintal)	% Growth from 2014-15
1.	Paddy (Common)	1360	2441	79%
	Paddy (Grade 'A')	1400	2461	76%
2.	Jowar (Hybrid)	1530	4023	163%
	Jowar (Maldandi)	1550	4073	163%
3.	Bajra	1250	2900	132%
4.	Maize	1310	2410	84%
5.	Ragi	1550	5205	236%
6.	Tur (Arhar)	4350	8450	94%
7.	Moong	4600	8780	91%
8.	Urad	4350	8200	89%
9.	Groundnut-in- shell	4000	7517	88%
10.	Soyabean (Yellow)	2560	5708	123%
11.	Sunflower Seed	3750	8343	122%
12.	Sesamum	4600	10346	125%
13.	Nigerseed	3600	10052	179%
14.	Cotton (Medium Staple)	3750	8267	120%
	Cotton (Long Staple)	4050	8667	114%

**Minimum Support Prices for all Rabi and Commercial Crops for Marketing Season 2026-27:**

S.No.	Crop	MSP 2014-15 (Rs. /quintal)	MSP 2026-27 (Rs. /quintal)	% Growth from 2014-15
<b>Rabi Crops</b>				
1.	Wheat	1400	2585	84%
2.	Barley	1150	2150	87%
3.	Gram	3175	5875	85%
4.	Masur (Lentil)	3075	7000	128%

5.	Rapeseed/Mustard	3100	6200	100%
6.	Safflower	3050	6540	114%
<b>Commercial Crops</b>				
1.	Jute	2400	5925	147%
2.	Copra (milling)	5550	12027	117%
	Copra (ball)	5830	12500	114%

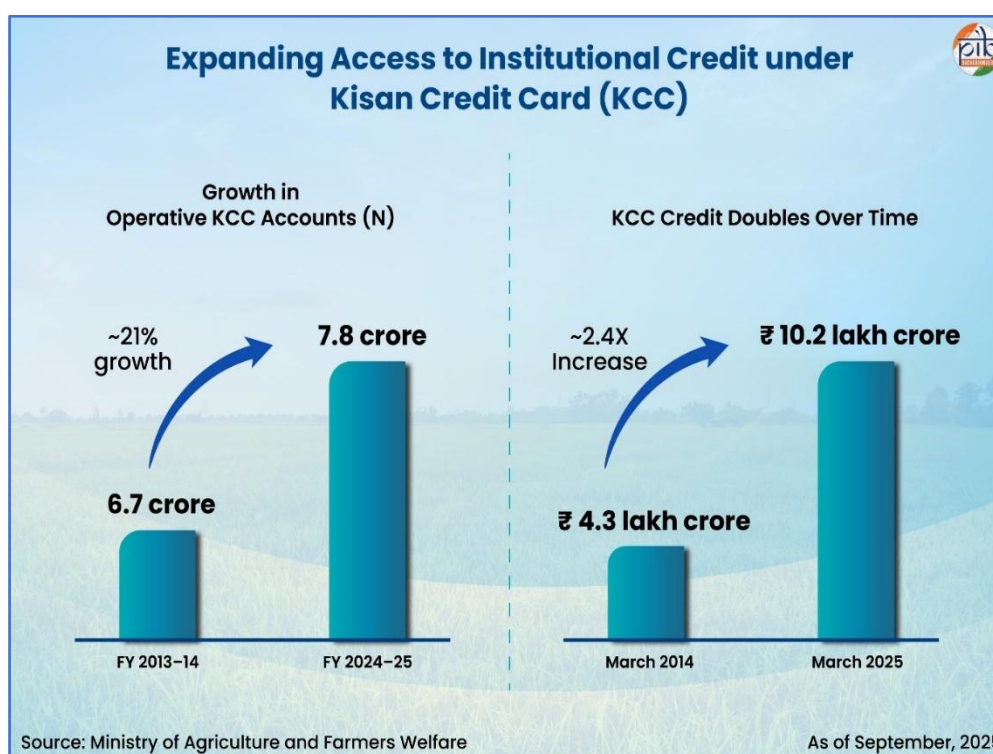
The steady increase in MSPs across crops reflects continued efforts to strengthen income support for farmers.

### The Growth of Institutional Agricultural Credit

Access to timely and affordable credit has improved through the **Kisan Credit Card (KCC) scheme**. The scheme provides a single window for farmers to meet their short-term and investment needs in agriculture and allied activities.

As of September 2025, the number of Operative KCC Accounts has increased from 6.46 crore in 2013-2014 to 7.81 crore in 2024-25. The amount in these accounts doubled from Rs 4.26 lakh crore in March 2014 to Rs 10.20 lakh crore in March 2025.

This highlights the scale of institutional credit outreach among farmers. The scope of the scheme covers cultivation expenses, post-harvest requirements, and marketing.



Further, **Ground Level Credit (GLC)** provides focused credit support to the agriculture and allied sectors from banks and financial institutions. The **GLC Flow** to agriculture increased from Rs 7.30 lakh crore in 2013-2014 to Rs 28.67 lakh crore in 2024-2025. This indicates the structural expansion of institutional finance to the farm sector.

## Advancing Inclusive Social Security for Farmers

The Pradhan Mantri Kisan Maandhan Yojana (PM-KMY) provides a pension-based social security framework for small and marginal farmers. The scheme offers a **monthly pension of Rs.3,000 after the age of 60**, subject to eligibility conditions. The scheme is voluntary and contributory, with eligibility for individuals aged **18 to 40 years**.

As of February 2026, around **24.95 lakh farmers have been enrolled** under the scheme. This shows the gradual expansion of social security coverage among farmers.

## Shifting Towards Resource Efficiency and Sustainability

Efficient management of water, soil, seeds, and energy resources has become central to agricultural development. Pradhan Mantri Krishi Sinchae Yojana (PMKSY) has strengthened irrigation coverage and water efficiency. The coverage of irrigation area increased from **49.3 percent to 55 percent** of the gross cropped area between FY16-FY21.

The Sub Mission on Seeds and Planting Materials (SMSP) focuses on expanding the supply of certified seeds. Under this initiative, about **6.85 lakh seed villages** have been established, producing **1,649 lakh quintals of quality seeds**.

The Soil Health Card (SHC) Scheme provides farmers with information on soil nutrients and guidance on fertiliser use. Since 2014-15, nearly **26 crore cards** have been issued as of March 2026, steadily expanding soil health management. **8,313 soil testing laboratories support this effort**. In addition, over **70,000 Krishi Sakhis** have been trained to provide soil health advisories and support informed farm practices.

Sustainable farming practices have gained importance in recent years. The Paramparagat Krishi Vikas Yojana (PKVY) promotes **organic farming** through cluster-based approaches. The Mission Organic Value Chain Development for North Eastern Region (MOVCDNER) supports organic production and market linkages in the North Eastern Region.

As of December 2025, **18.84 lakh hectares** have been covered under PKVY, benefiting **33.93 lakh farmers**. Under MOVCDNER, **2.36 lakh hectares** have been covered, with **2.70 lakh farmers supported**, since its inception in 2015-16.

The National Mission on Natural Farming (NMNF) promotes **chemical-free farming** practices to improve soil health and reduce input costs. So far, the scheme has covered **9 lakh hectares** and registered **19 lakh farmers**.

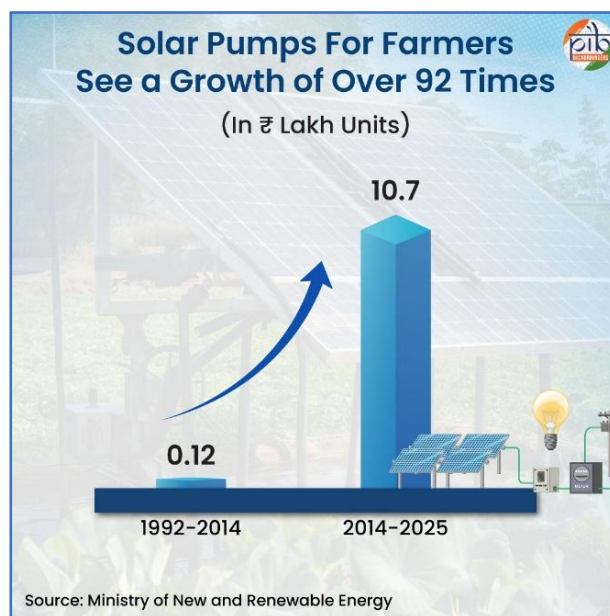
Additionally, **2,996 climate-resilient crop varieties** have been released during 2014-2025. The government also promoted climate-resilient village models in **448 villages**, benefiting **8.5 lakh farmers** across agriculture and allied sectors. Integrated Farming Systems (IFS) were expanded to **1.04 lakh farm households** across **79 districts**. These interventions increased farm incomes to **Rs. 1.5-3.6 lakh per hectare annually**.

Renewable energy has also become part of agricultural development. The Pradhan Mantri Kisan Urja Suraksha Evam Utthan Mahabhiyan (PM KUSUM), launched in 2019, supports

the use of solar energy in farming. It promotes solar pumps and enables farmers to **generate and sell power**.

The scheme has seen significant expansion in recent years. As of mid-2025, solar pumps for farmers have grown by over **92 times**, indicating increased adoption. As of December 2025, over **21.77 lakh farmers** have benefited under the scheme. More than **10 lakh standalone solar agricultural pumps** have been installed. Over **13 lakh grid-connected agricultural pumps** have been solarised.

These efforts reflect a gradual shift towards **efficient and sustainable agriculture**. Improved irrigation, better inputs, and clean energy solutions have supported productivity while conserving resources.



### Enhancing Food Distribution Systems Through Targeted Reforms

Improvements in distribution systems and targeted regional interventions have further helped strengthen access, transparency, and inclusion in underperforming regions. Launched in 2025, the **Prime Minister Dhan-Dhaanya Krishi Yojana (PMDDKY)** targets **100 low-performing agricultural districts**. The scheme focuses on irrigation, crop diversification, post-harvest infrastructure, and improved access to credit. As of April 2026, the initiative is benefitting **1.7 crore farmers**, strengthening outcomes at the grassroots level.

The **Public Distribution System (PDS)** has been strengthened to improve the efficiency of foodgrain distribution. It also ensures timely access to subsidized foodgrains for eligible households. Under the **National Food Security Act (NFSA)**, subsidized foodgrains are provided to around **79.8 crore beneficiaries**. Furthermore, under **SARTHAK PDS – (Scheme for Assistance in Ration Transport and Handling-Income with Automation in PDS)**, the Central Government will allocate **Rs. 25,530 crore** over the next 5 years. The Scheme will be strengthening foodgrain distribution systems and support the NFSA for nearly **81.35 crore beneficiaries** across the country.

The scheme aims to strengthen foodgrain distribution systems and support the effective implementation of the NFSA for nearly 81.35 crore beneficiaries across the country.

The **One Nation One Ration Card (ONORC)** system is operational across all **36 States and Union Territories**. Around **99.9 percent** of ration cards have been Aadhaar-seeded under the system. Nearly **99.8 percent** of Fair Price Shops are equipped with electronic point-of-sale devices. These cover about **5.50 lakh outlets** nationwide. Over **98 percent** of transactions have been digitized under the system. Thus, these reforms in distribution have improved transparency and portability.

### Empowering Rural Institutions through Cooperative and FPO Reforms

The cooperative sector has seen renewed focus in recent years. The establishment of the Ministry of Cooperation in 2021 focuses on strengthening institutions and the capacity of cooperatives. The targeted efforts are strengthening Primary Agricultural Credit Societies (PACS) by improving their functionality and transparency. A **National Cooperative Database (NCD)** covering over **8.4 lakh cooperatives**, including PACS, has been developed to support evidence-based planning.

Model bye-laws have been shared with States and Union Territories, enabling PACS to diversify into more than **25 business activities**. These activities include petrol pumps, LPG distributorships, Jan Aushadhi Kendras, and rural services. These reforms are enhancing accountability, expanding operational scope, and improving the economic viability of cooperative institutions.

Digitization has further strengthened cooperative institutions through the PACS computerization project. Bringing societies onto a common digital platform has improved transparency, efficiency, and grassroots service delivery.

- **79,630 PACS sanctioned for computerization across 31 States and Union Territories**
- **61,866 PACS onboarded on Enterprise Resource Planning (ERP) -based national software as of March 2026**

Further, the programme for the **formation and promotion of 10,000 Farmer-Producer Organizations**, launched in 2020, has expanded collective participation. As of February 2026, **10,000 FPOs have been registered**. This has enabled farmers to aggregate produce and access markets more effectively.

These developments highlight a broader shift towards organized and institution-led agriculture. Stronger farmer groups and cooperatives are supporting better market participation and long-term sustainability.

## **From Farm Gate to Market: Strengthening Agricultural Infrastructure**

Improving market access and infrastructure has been a key focus in recent years. Launched in 2020-21, the **Agriculture Infrastructure Fund (AIF)** supports investment in post-harvest infrastructure. It focuses on storage, logistics, and processing at the farm gate. As of March 2026, loans worth **Rs. 84,202 crore** have been sanctioned for **1.68 lakh projects under AIF**. The scheme has also mobilized investment of **Rs. 1.33 lakh crore**, strengthening rural infrastructure.

**The National Agriculture Market (e-NAM)** has improved market integration. It provides a unified electronic platform for trading agricultural commodities. As of March 2026, **1,656 mandis have been integrated**, with over **1.80 crore farmers** and **4,724 FPOs registered**. The platform enables transparent price discovery and direct payments to farmers.

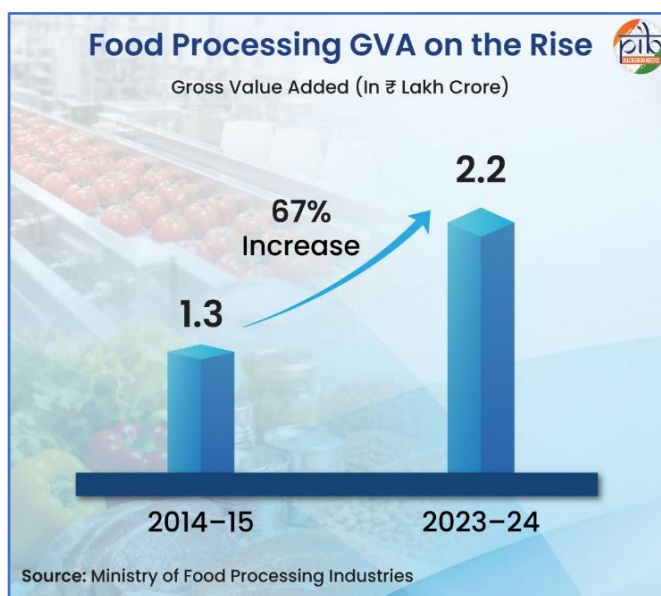
Physical and service infrastructure have also expanded. **Pradhan Mantri Kisan Samridhhi Kendras (PMKSK)**, launched in 2022, serve as **one-stop centres** for inputs and advisory services. As of August 2025, about **1.8 lakh Kendras** have been established across the country.

**The Mega Food Park scheme** has strengthened linkages between farmers and markets. The number of Mega Food Parks has increased from **2 in 2014 to 41 in 2025**, including **24**

operational and 17 under implementation. These parks provide modern infrastructure for processing, storage, and logistics. Improved infrastructure, digital platforms, and processing capacity have enhanced efficiency and supported better income opportunities for farmers.

## Linking Agriculture and Industry Through Food Processing Reforms

Food processing has emerged as a key link between agriculture and industry. It supports value addition and improves market access. The sector recorded a rise in Gross Value Added from **Rs.1.34 lakh crore in 2014-15 to Rs.2.24 lakh crore in 2023-24**. Budget allocation for the Ministry of Food Processing Industries increased from **Rs.785.86 crore in 2014-15 to Rs.4,064 crore in 2026-27**. The sector also contributes significantly to employment generation. It accounts for **12.83 percent** of organized manufacturing employment according to the Annual Survey of Industries (ASI), 2023–24.



The Production-Linked Incentive Scheme for Food Processing Industry (PLISFPI) is being implemented from 2021–22 to 2026–27. The scheme promotes capacity expansion and value addition in the sector with a financial outlay of **Rs. 10,900 crore**.

- Under PLISFPI, a total of **165 applications** have been approved by the Ministry of Food Processing Industries across various categories.
- These approvals correspond to **274 project locations**.
- Beneficiaries have reported investments amounting to **Rs.9,207 crore** under the scheme.
- Incentives worth **Rs.2,162.55 crore** have been disbursed as of February 2026.

The Pradhan Mantri Formalisation of Micro Food Processing Enterprises Scheme (PMFME), launched in 2020-21, supports microenterprises and decentralized processing.

As of 31 December 2025:

- **4,04,062** applications supported
- **1,72,707** loans facilitated
- **Rs.14,190 crore** term lending extended
- **Rs.1,277.45 crore** seed capital support to women Self Help Groups (SHGs)

In addition to these initiatives, efforts have also focused on strengthening large-scale processing infrastructure. The Pradhan Mantri Kisan Sampada Yojana (PMKSY) supports infrastructure, value addition, and supply chains. Launched in 2017, with an outlay of

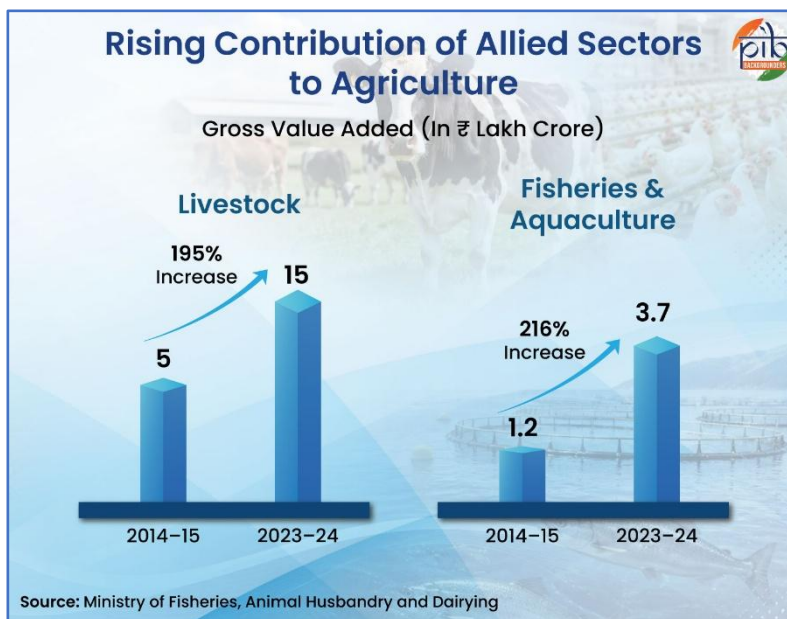
Rs.6,520 crore, the scheme has approved 1,607 projects. It has generated employment for 7.25 lakh people and benefited over 50.27 lakh farmers as of mid-2025.

## Agricultural Diversification and the Growth of Allied Sectors

Diversification into allied sectors has strengthened farm incomes and reduced dependence on crop-based income alone. The allied sectors include livestock, fisheries, and dairy, providing multiple income streams and supporting rural employment.

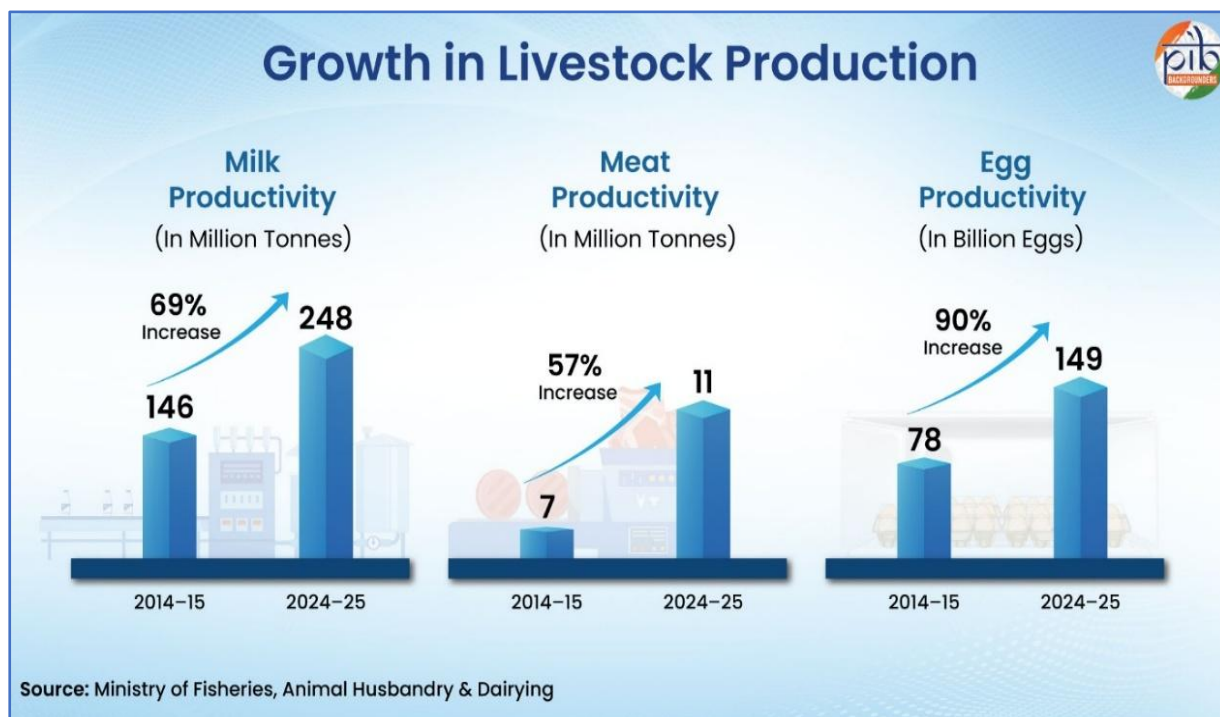
The contribution of these sectors to the economy has increased steadily. The livestock sector increased from Rs.5.10 lakh crore to Rs.15.06 lakh crore during the

same period. The fisheries and aquaculture sector also expanded. GVA rose from Rs. 1.17 lakh crore to Rs. 3.68 lakh crore, accounting for 7.55 percent of agriculture and allied GVA.



## Livestock and Dairy as Drivers of Rural Economic Growth

The livestock sector has recorded a compound annual growth rate (CAGR) of 12.77 percent since 2014-15. India remains the **largest producer of milk** globally, contributing nearly 25 percent of global output. Milk production increased from 146.31 million tonnes in 2014-15 to 247.87 million tonnes in 2024-25, reflecting a growth of over 69.4 percent. Improved availability has supported nutrition outcomes. Per capita milk availability reached 485 grams per day in 2024-25, compared to the global average of 328 grams per day.



Productivity gains have supported this expansion:

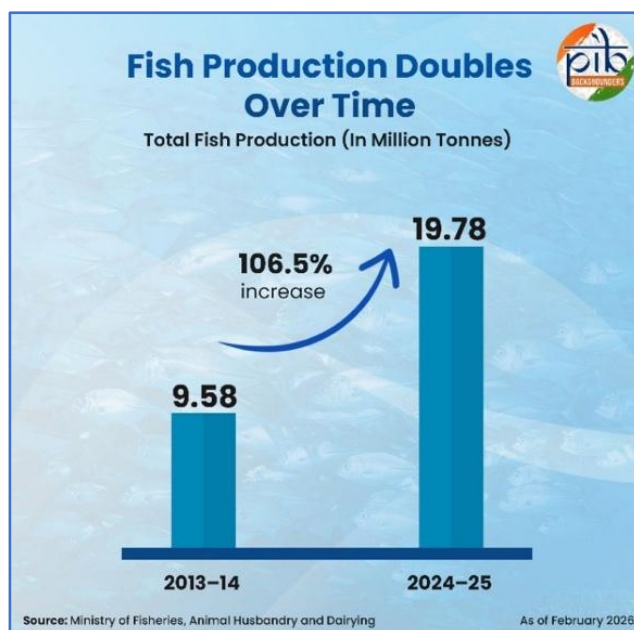
- Indigenous cattle productivity increased from 927 kg in 2014-15 to 1,292 kg in 2023-24
- Buffalo productivity increased from 1,880 kg to 2,161 kg
- Overall bovine productivity improved from 1,648.17 kg in 2013-14 to 2,079 kg in 2024-25

Poultry and meat production have also expanded, with India ranking **second in egg production and fourth in meat production globally**:

- Egg production increased from 78.48 billion in 2014-15 to 149.11 billion eggs in 2024-25
- Per capita availability increased from 62 to 106 eggs per year
- Meat production increased from 6.69 million tonnes to 10.50 million tonnes

### From Aquaculture Expansion to Fisheries Collectivization

Over the decade, India's fisheries sector has recorded a sustained average annual growth rate of **8.74 percent**. The total fish production increased from **9.58 million tonnes** in 2013-14 to **19.78 million tonnes** in 2024-25. Inland fisheries and aquaculture have been the primary drivers of this expansion. During the same period, the sector registered a **147 percent** increase, from **6.14 million tonnes** to **15.16 million tonnes**. Further, in the fisheries sector, collectivization has been strengthened through the formation of **2,195 Farmers' Fisheries Producer Organizations (FFPOs)**. Institutional support has also expanded, with **4.39 lakh fishers** covered under the Kisan Credit Card scheme. This has improved access to credit and enhanced sectoral resilience.



### Emerging Opportunities in Beekeeping and Bio Energy

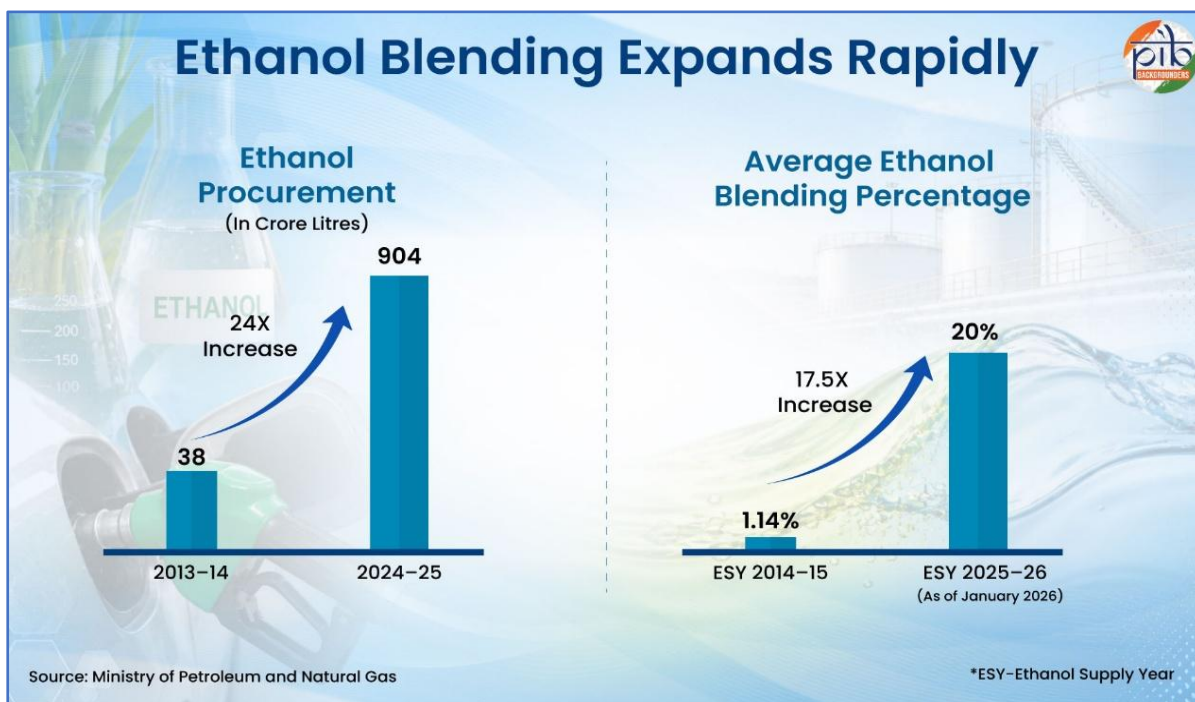
**National Beekeeping and Honey Mission (NBHM):** The National Beekeeping and Honey Mission, launched in 2020, promotes scientific beekeeping and rural livelihoods. Honey production has risen from **0.081 million tonnes** to **0.152 million tonnes**. Also, exports grew by **240 percent**, making India a leading honey exporter.

**Ethanol Blending Petrol (EBP) Programme:** Bio-energy has emerged as an important component of agricultural diversification. It supports farmer incomes while contributing to energy security.

Ethanol is an agro-based fuel produced from sugarcane by-products and food grains. The Ethanol Blended Petrol Programme promotes its blending with petrol to reduce import dependence and support domestic production.

The programme has expanded significantly over the past decade:

- ethanol procurement increased from **38 crore litres** in 2013-14 to **904 crore litres** in 2024-25
- the average percentage of Ethanol blended with petrol by Public Sector Oil Marketing Companies (OMCs) under the EBP Programme rose to **20 percent** for ESY 2025-26 (as of January 2026) from **1.14 percent** in 2014-15
- sugar mills earned over **Rs.1.29 lakh crore** from ethanol sales over the past decade, and
- investments of over **Rs.42,000 crore** have been mobilized in the sector.



The trend reflects that bio-energy initiatives are supporting income diversification while strengthening the broader rural economy.

## Enhancing Global Integration Through Agricultural and Processed Food Exports

Agricultural and allied exports have strengthened India's integration with global markets. Growth in production, processing capacity, and market access has supported this expansion.

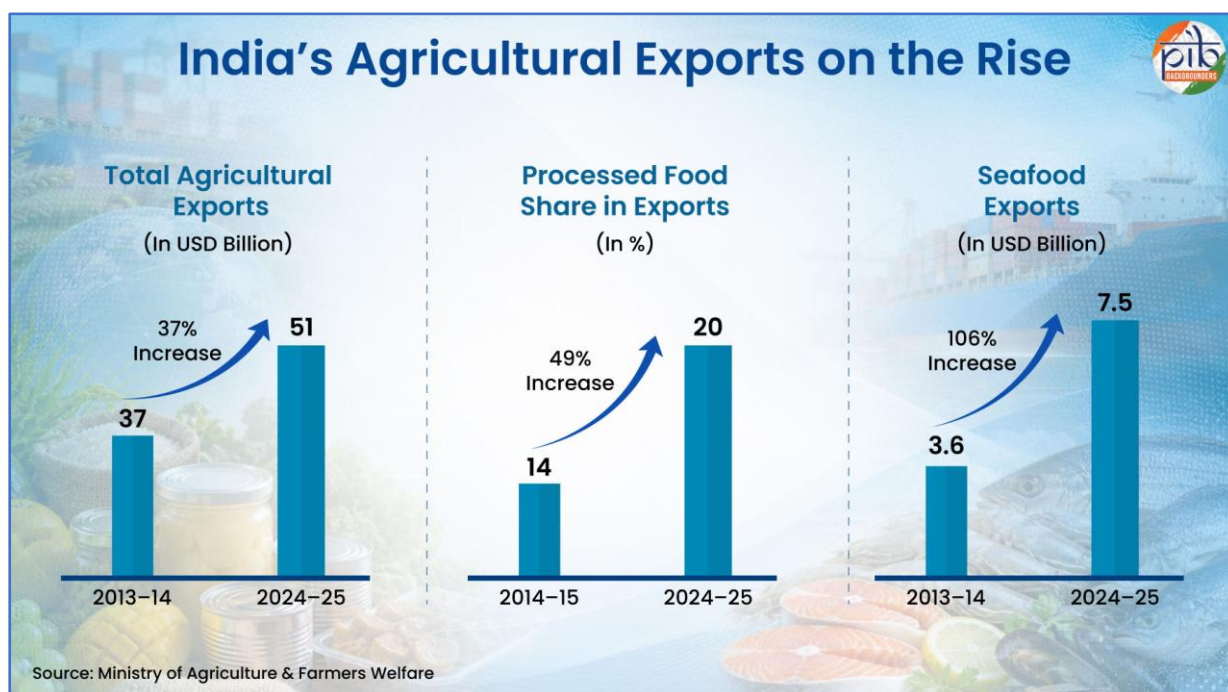
The value of agricultural exports increased from USD 37.29 billion in 2013-14 to USD 51.1 billion in 2024-25. This registered a growth of nearly 37 percent. This indicates steady integration of Indian agriculture with global trade and value chains.

### Diversifying the Export Basket

The export basket has expanded across both **primary and processed products**. India has become a **top global exporter of rice, spices, marine products, cotton, and sugar**.

**Processed food exports** have gained a larger share of the agricultural exports over time. Their share increased from 13.7 percent in 2014-15 to 20.4 percent in 2024-25, a nearly 49 percent rise. This reflects growing value addition and improved global competitiveness.

**Marine exports** have also shown a strong growth within the basket. Seafood exports increased from USD 3.64 billion in 2013-14 to around USD 7.52 billion in 2024-25. This recorded a growth of about 106 percent. These exports now reach over 130 countries, strengthening India's presence in global seafood markets.



These developments indicate a shift towards a more diversified and value-added export basket. Agricultural exports are increasingly moving beyond primary commodities towards processed and high-value products.

## Modernizing Agriculture Through Digital Platforms and Precision Technologies

Technology is increasingly shaping agricultural practices. Digital systems are improving planning, strengthening service delivery, and helping farmers access timely information.

**Digital Agriculture Mission:** The Digital Agriculture Mission is creating a unified digital ecosystem for agriculture. It integrates farmer databases, land records, and crop information to improve targeting and transparency.

This expansion is visible in the scale of digitization. As of February 2026, over **7.63 crore Farmer IDs** have been created, and about **23.5 crore crop plots** have been digitized. These systems support better planning and enable more accurate delivery of benefits.

**Namo Drone Didi:** The initiative, launched in 2023, promotes the use of drones for agricultural operations by women SHGs. The scheme was approved with an outlay of **Rs.1,261 crore** for the period **2023-24 to 2025-26**.

Under the scheme, 500 drones were distributed in 2023-24. This scheme is empowering women through drone-based livelihood opportunities and modern agricultural technology.

**National Pest Surveillance System:** The National Pest Surveillance System supports real-time monitoring of pest attacks. It uses digital tools and field-level data to provide early warnings and advisories.

Launched in **August 2024**, the system covers **66 crops** and monitors over **432 pest species**. It is being used by more than **10,000 field functionaries**, enabling timely advisories to farmers. This helps reduce crop losses and improves response to emerging risks.

**Kisan e-Mitra**: Kisan e-Mitra provides farmers with digital access to information on schemes and services. As of March 2026, the platform has handled over **95 lakh queries**, with a daily capacity of more than **8,000 queries**. It is available in **11 regional languages**, improving accessibility for farmers across regions. These targeted initiatives reflect a gradual transition towards technology-driven agriculture. Digital tools are improving operational efficiency, expanding institutional outreach, and enabling faster access to services, information, and risk management mechanisms.

## Knowledge-Driven Growth: Scaling Agricultural Extension and Advisory Services

As agriculture becomes increasingly technology-driven and climate-sensitive, strengthening farmers' knowledge systems has become increasingly important. Training and extension programmes are helping farmers adopt improved practices, respond to local challenges, and access scientific advisory support.

**Krishi Vigyan Kendras (KVKs)**: Krishi Vigyan Kendras (KVKs), established by the Indian Council of Agricultural Research (ICAR), serve as frontline farmer-training centers across the country. Through **731 KVKs**, training programmes on agricultural practices and technology adoption reached about **58.02 lakh farmers** between **2021-22 and 2023-24**. In the **first ten months of 2024-25** alone, **18.56 lakh farmers** were trained.

**Agricultural Technology Management Agency (ATMA)**: The Agricultural Technology Management Agency supports decentralized agricultural extension systems. It focuses on strengthening district-level farmer advisory services.

Training coverage under the scheme has remained substantial. About **32.38 lakh farmers** were trained in **2021-22**, followed by **40.11 lakh** in **2022-23** and **36.60 lakh** in **2023-24**. By **January 2025**, nearly **18.30 lakh farmers** had been trained.

Overall, around **1.27 crore farmers** have been trained under ATMA between **2021 and 2025**. These efforts have improved awareness and adoption of improved practices.

Further, Extension services are helping farmers adopt better practices and respond to changing conditions. They are also strengthening the link between research and field-level implementation.

## Advancing Toward a Resilient and Integrated Agricultural Ecosystem

The targeted interventions underscore a structural transformation in India's agricultural sector. Policy reforms increasingly focused on productivity, income stability, and risk mitigation. Evidence of increased output and institutional efficacy reflects a transition toward a more resilient ecosystem. This is supported by improved access to credit, insurance, expanded MSP operations, and digital infrastructure.

Strategic investments in integrated value chains have optimized farm-to-market linkages. Also, the expansion of allied activities has effectively diversified rural livelihoods. Furthermore, these interventions are **empowering the Annadatas** while laying the foundation for a more **resilient, inclusive, and sustainable agricultural sector**.

## References

### Cabinet Committee on Economic Affairs (CCEA)

<https://www.pib.gov.in/PressReleaseIframePage.aspx?PRID=2095068&reg=3&lang=2>

<https://www.pib.gov.in/PressReleasePage.aspx?PRID=2265788&reg=3&lang=1>

### Ministry of Agriculture and Farmers Welfare

<https://www.pib.gov.in/PressReleasePage.aspx?PRID=2237739&reg=3&lang=2>

<https://www.pib.gov.in/PressReleasePage.aspx?PRID=2239789&reg=3&lang=2>

[https://sansad.in/getFile/loksabhaquestions/annex/187/AS450\\_OAibYg.pdf?source=pqals](https://sansad.in/getFile/loksabhaquestions/annex/187/AS450_OAibYg.pdf?source=pqals)

<https://www.pib.gov.in/newsite/PrintRelease.aspx?relid=105862&reg=3&lang=2>

[https://sansad.in/getFile/loksabhaquestions/annex/187/AS450\\_OAibYg.pdf?source=pqals](https://sansad.in/getFile/loksabhaquestions/annex/187/AS450_OAibYg.pdf?source=pqals)

<https://www.pib.gov.in/newsite/PrintRelease.aspx?relid=110936&reg=3&lang=2>

<https://www.pib.gov.in/newsite/PrintRelease.aspx?relid=112426&reg=3&lang=2>

<https://www.pib.gov.in/FactsheetDetails.aspx?Id=149244&reg=3&lang=2>

<https://www.pib.gov.in/PressReleaseDetail.aspx?PRID=2244628&reg=3&lang=1>

<https://icar.org.in/en/agricultural-extension-division/achievements-agricultural-extension-division>

[https://sansad.in/getFile/annex/270/AU3226\\_xbrVz9.pdf?source=pqars](https://sansad.in/getFile/annex/270/AU3226_xbrVz9.pdf?source=pqars)

### Ministry of Finance

<https://www.indiabudget.gov.in/doc/eb/allsbepdf>

<https://www.pib.gov.in/PressReleasePage.aspx?PRID=2251315&reg=3&lang=1#:~:text=In%20this%20context%2C%20it%20is,like%20pulses%20and%20edible%20oilseeds>

[https://sansad.in/getFile/annex/270/AU1981\\_EnKkCu.pdf?source=pqars#:~:text=The%20credit%20limit%20to%20all,60.50%25%20in%202016%2D17](https://sansad.in/getFile/annex/270/AU1981_EnKkCu.pdf?source=pqars#:~:text=The%20credit%20limit%20to%20all,60.50%25%20in%202016%2D17)

[https://www.mofpi.gov.in/sites/default/files/ob\\_14-15.pdf.pdf](https://www.mofpi.gov.in/sites/default/files/ob_14-15.pdf.pdf)

[https://www.pib.gov.in/newsite/PrintRelease.aspx?relid=106273&reg=3&lang=2#:~:text=Agricultural%20Exports%20Increase%20by%205.1,Marine%20Exports%20up%20by%2045%25&text=Agricultural%20exports%20\(including%20marine\)%20grew,44.8%25%20over%20the%20same%20period](https://www.pib.gov.in/newsite/PrintRelease.aspx?relid=106273&reg=3&lang=2#:~:text=Agricultural%20Exports%20Increase%20by%205.1,Marine%20Exports%20up%20by%2045%25&text=Agricultural%20exports%20(including%20marine)%20grew,44.8%25%20over%20the%20same%20period)

<https://www.pib.gov.in/PressReleasePage.aspx?PRID=2237490&reg=3&lang=1>

### Ministry of Chemicals and Fertilizers

<https://www.pib.gov.in/PressReleaseDetail.aspx?PRID=2239623&reg=3&lang=1#:~:text=Encouraging%20adoption%20of%20alternative%20fertilizers,its%20inception%20in%202015%E2%80%9316>

### Ministry of New and Renewable Energy

<https://www.pib.gov.in/PressReleasePage.aspx?PRID=2042069&reg=3&lang=2#:~:text=Posted%20On:%2006%20AUG%202024%202:56PM%20by,under%20the%20PM%20DKUSUM%20scheme%20benefiting%20the%20farmers:%2D>

<https://www.pib.gov.in/PressReleaseDetail.aspx?PRID=2244667&reg=1&lang=1>

### Ministry of Consumer Affairs, Food & Public Distribution

<https://www.pib.gov.in/PressReleasePage.aspx?PRID=2210211>

### Ministry of Cooperation

<https://www.pib.gov.in/PressReleasePage.aspx?PRID=2247832&reg=3&lang=2>

<https://www.pib.gov.in/PressReleasePage.aspx?PRID=2245119&reg=3&lang=2>

### **Ministry of Food Processing Industries**

<https://www.pib.gov.in/PressReleaseDetailm.aspx?PRID=2212769&reg=3&lang=2>

<https://www.pib.gov.in/PressReleasePage.aspx?PRID=2254015&reg=3&lang=2>

### **Ministry of Fisheries, Animal Husbandry & Dairying**

<https://www.pib.gov.in/PressReleasePage.aspx?PRID=2212290&reg=3&lang=2>

<https://www.pib.gov.in/PressReleasePage.aspx?PRID=2225760>

### **Ministry of Petroleum & Natural Gas**

<https://www.pib.gov.in/PressReleasePage.aspx?PRID=2220434&reg=3&lang=2>

[https://sansad.in/getFile/annex/270/AU1898\\_HVBDDeE.pdf?source=pqars](https://sansad.in/getFile/annex/270/AU1898_HVBDDeE.pdf?source=pqars)

### **PIB Backgrounder**

<https://www.pib.gov.in/PressNoteDetails.aspx?NoteId=157935&ModuleId=3&reg=3&lang=1>

<https://www.pib.gov.in/PressReleaseDetailm.aspx?PRID=2238004&reg=3&lang=2>

<https://www.pib.gov.in/FactsheetDetails.aspx?Id=149246&reg=37&lang=1>

<https://static.pib.gov.in/WriteReadData/specificdocs/documents/2025/jun/doc202567565801.pdf>

<https://www.pib.gov.in/PressReleasePage.aspx?PRID=2179514>

<https://www.pib.gov.in/PressNoteDetails.aspx?id=158169&NoteId=158169&ModuleId=3&reg=3&lang=2>

<https://www.pib.gov.in/PressReleasePage.aspx?PRID=2234117&reg=3&lang=1>

<https://www.pib.gov.in/PressNoteDetails.aspx?NoteId=155859&ModuleId=3&reg=3&lang=2>

<https://www.pib.gov.in/PressReleasePage.aspx?PRID=2254015&reg=3&lang=2>

<https://www.pib.gov.in/PressNoteDetails.aspx?NoteId=157597&ModuleId=3&reg=3&lang=1>

<https://static.pib.gov.in/WriteReadData/specificdocs/documents/2026/feb/doc2026214789901.pdf>

<https://www.pib.gov.in/PressNoteDetails.aspx?ModuleId=3&NoteId=157897&id=157897&reg=3&lang=2>

<https://www.pib.gov.in/PressReleaseDetailm.aspx?PRID=2186124&reg=3&lang=2>

### **PIB Research**