

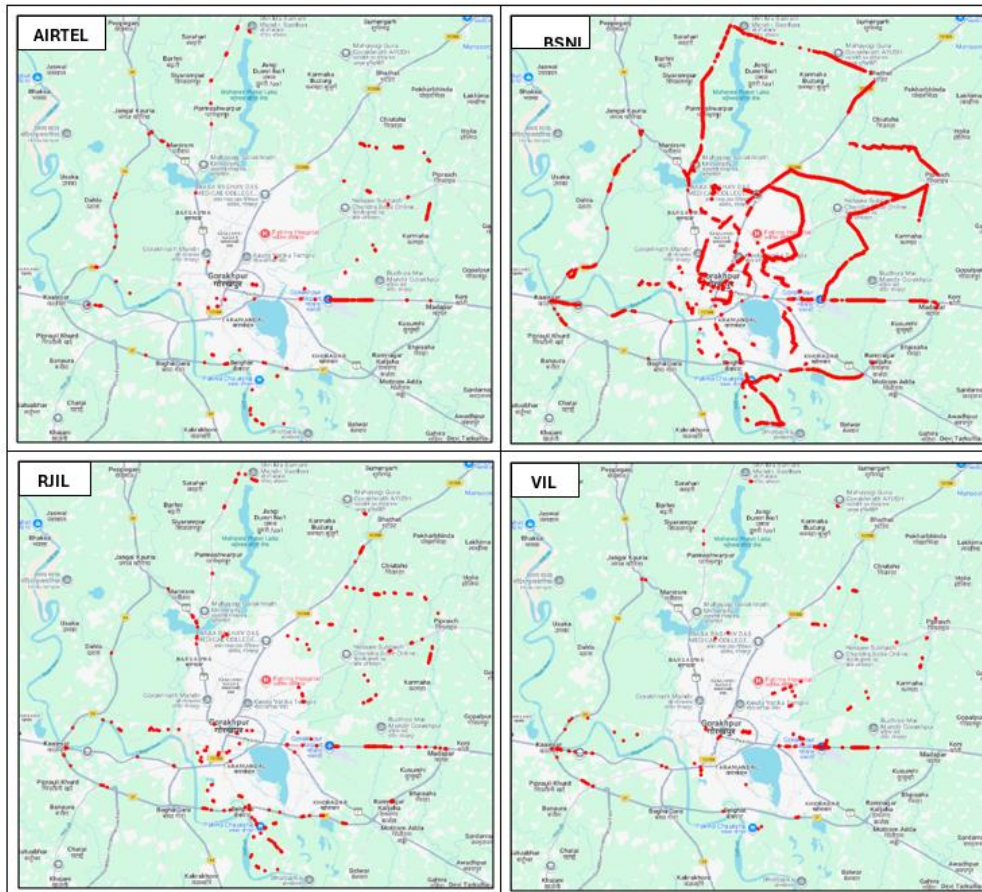
1. **Gorakhpur City & nearby areas: -**

- a. **Coverage Gap** – The coverage distribution found less than the minimum specified signal strength for the drive test route in auto-selection mode (5G/4G/3G/2G) during voice testing, is as below:

Parameter	AIRTEL	BSNL	RJIL	VIL
Total Number of Samples captured on Drive test route	51058	48601	50514	50572
Number of Samples having poor signal strength	589	13582	623	569

Note: Signal strength has been considered poor if it falls below -110 dBm for 5G & 4G, -90 dBm for 3G, and -85 dBm for 2G.

Coverage Gap observed

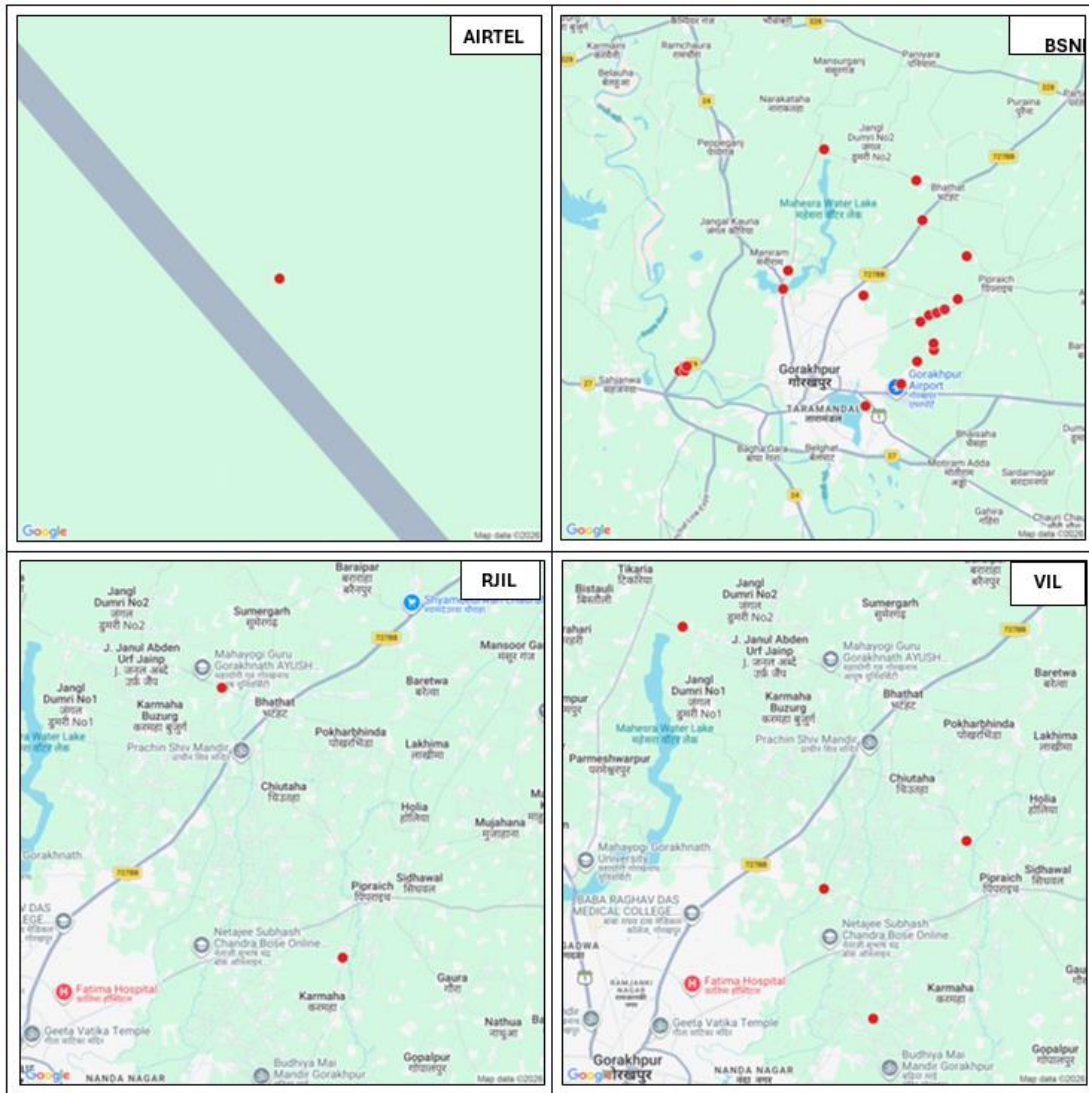


Note: Plot is based on Dynamic Drive Test results only.

- b. **Dropped Calls** – The TSP-wise details of dropped calls in auto-selection mode (5G/ 4G/ 3G/ 2G) are as below:

Parameter	AIRTEL	BSNL	RJIL	VIL
Number of successful Calls Established	453	431	454	453
Number of dropped Calls	1	22	2	4

Locations of Dropped Calls



Note: Dropped calls locations are shown in red colour and which can be clicked to know the exact location (latitude and longitude) on the map.

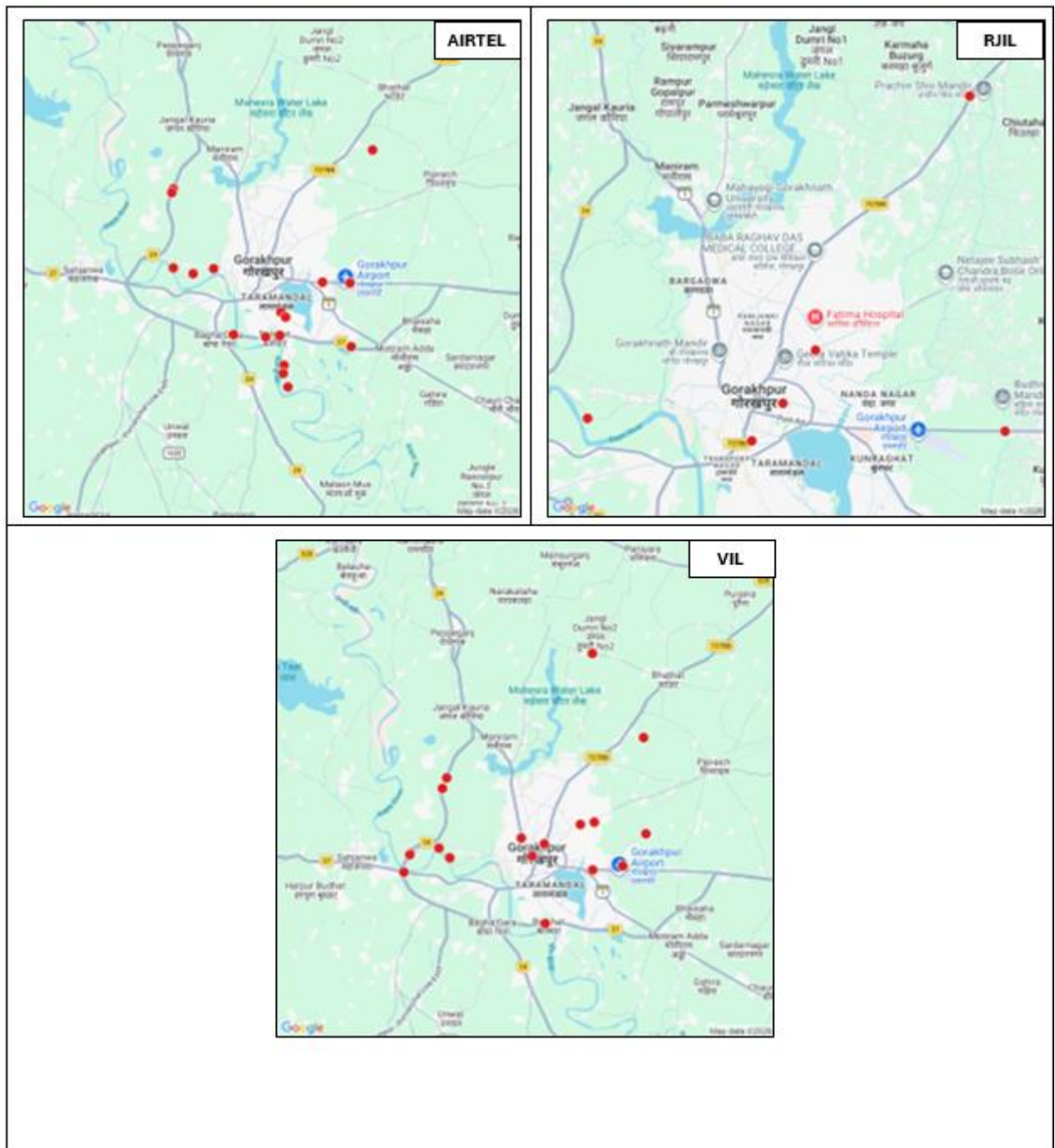
c. **Call Silence Instance** - The TSP-wise details of Call silence instance in Auto-selection mode (5G/4G) are as below:

Parameter	AIRTEL	BSNL	RJIL	VIL
Call Established (within service provider network)	440	NA*	439	449

Number of silences calls for >3 Sec	16	NA*	6	18
Total number of silence instances for >3 Sec	18	NA*	6	18

*NA- Not Applicable

Locations of Call Silence Instance

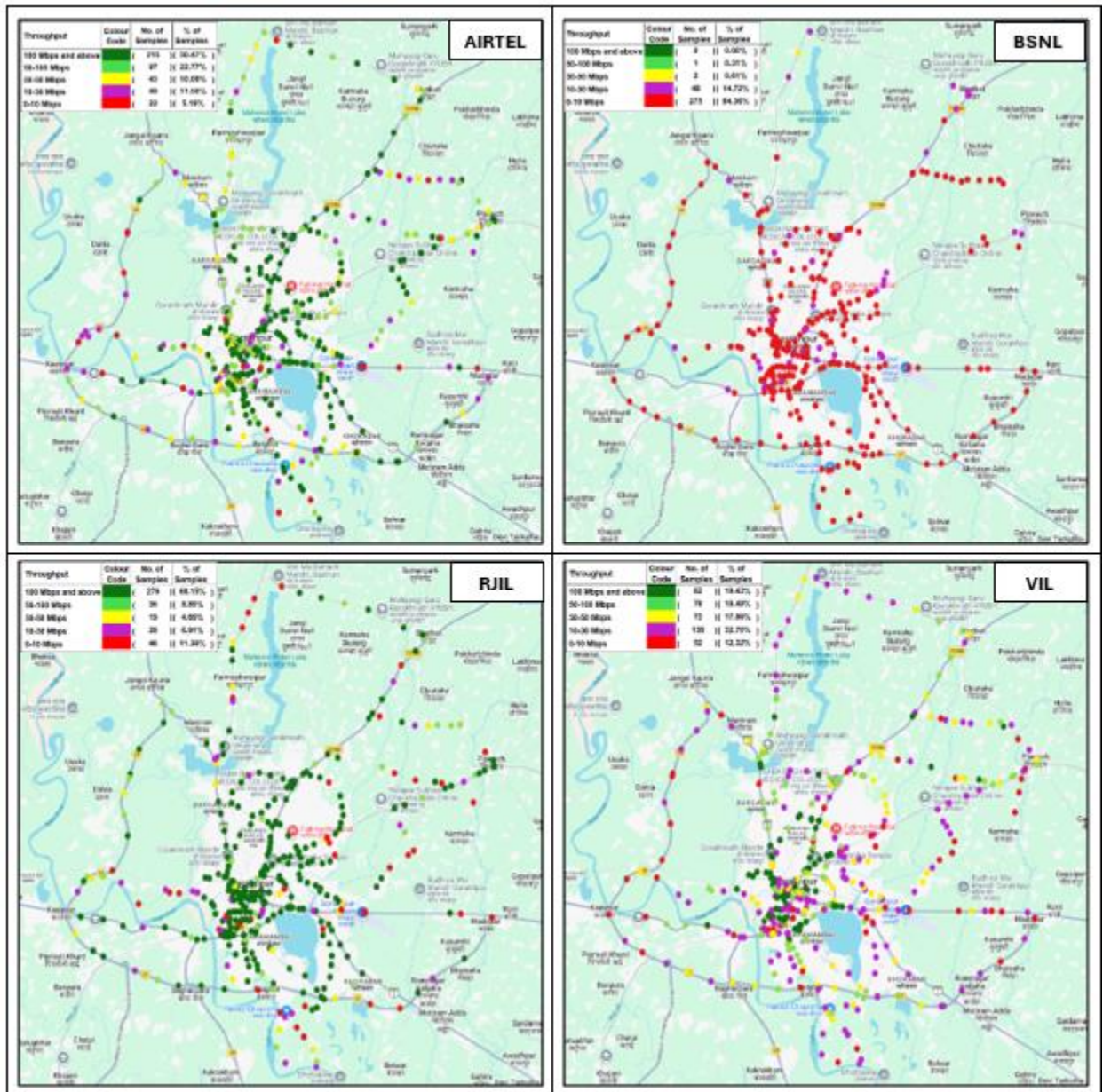


Note: Call silence instances are shown in red color and which can be clicked to know the exact location (latitude and longitude) on the map

- d. **Data Download and Upload throughput:** The TSP-wise details of **Average Download (DL)** and **Upload (UL) throughput** against declared typical DL/UL Throughput for month, in Auto-selection mode (5G/4G/3G/2G) are as below:

(i) Download Throughput

Parameter	Measured in	AIRTEL (upto 5G)	BSNL (upto 4G)	RJIL (upto 5G)	VIL (upto 5G)
Typical Download throughput declared by TSP	(Mbits/s)	49.00	3.46	15.00	15.00
Average Download Throughput measured during IDT	(Mbits/s)	116.48	5.54	204.44	64.50

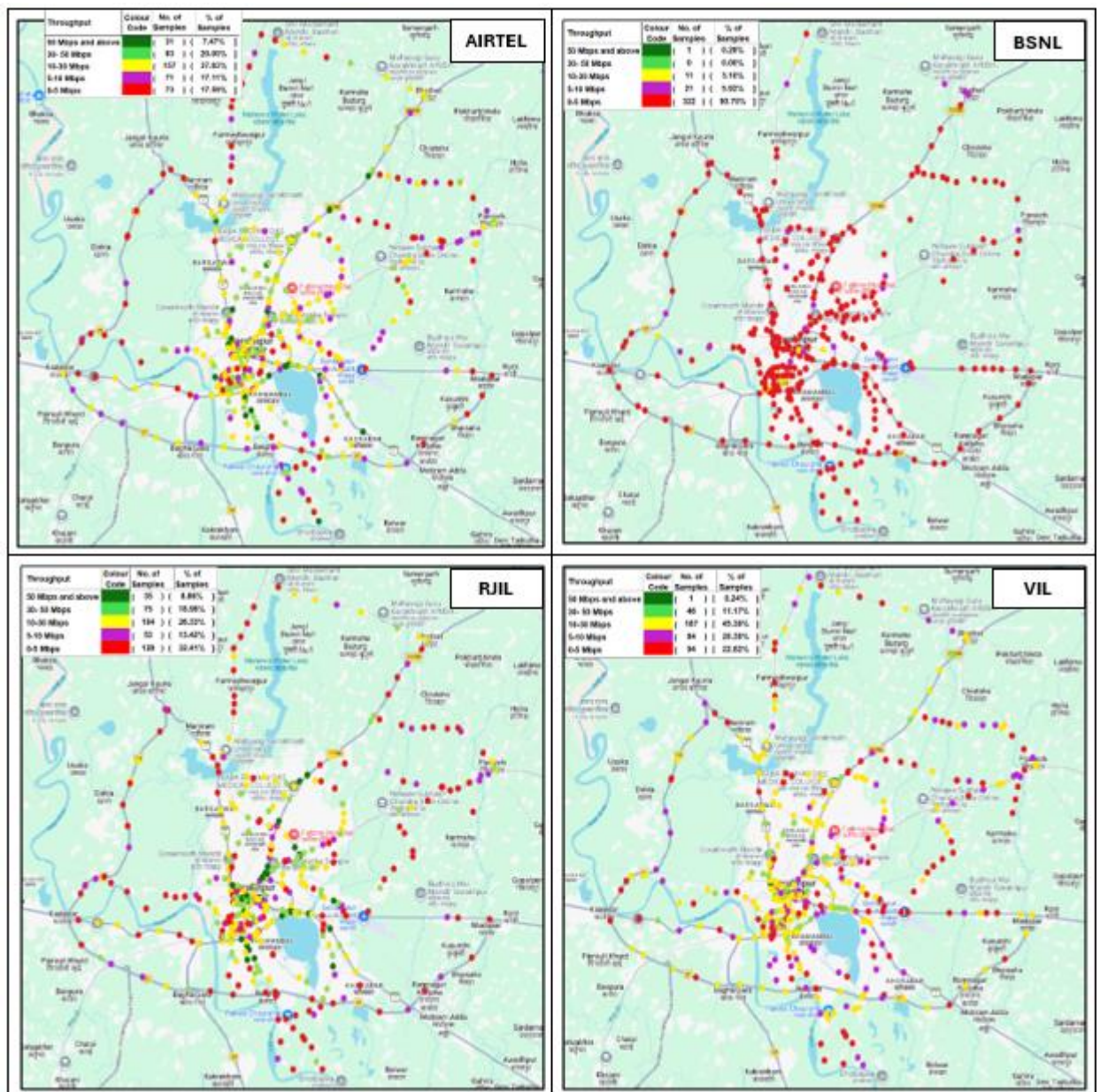


Note: Plot is based on Dynamic Drive Test results only

(ii) Upload Throughput

Parameter	Measured in	AIRTEL (upto 5G)	BSNL (upto 4G)	RJIL (upto 5G)	VIL (upto 5G)
Typical upload throughput	(Mbits/s)	8.00	2.64	7.00	8.00

declared by TSP					
Average Upload Throughput measured during IDT	(Mbits/s)	21.49	2.67	19.74	14.83



Note: Plot is based on Dynamic Drive Test results only.

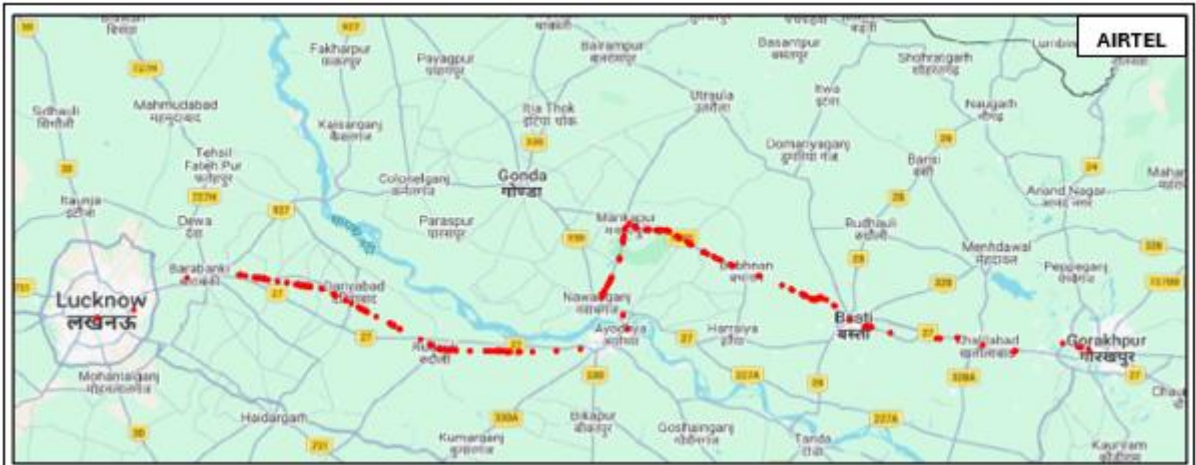
2. **Lucknow to Gorakhpur Railway Route:**

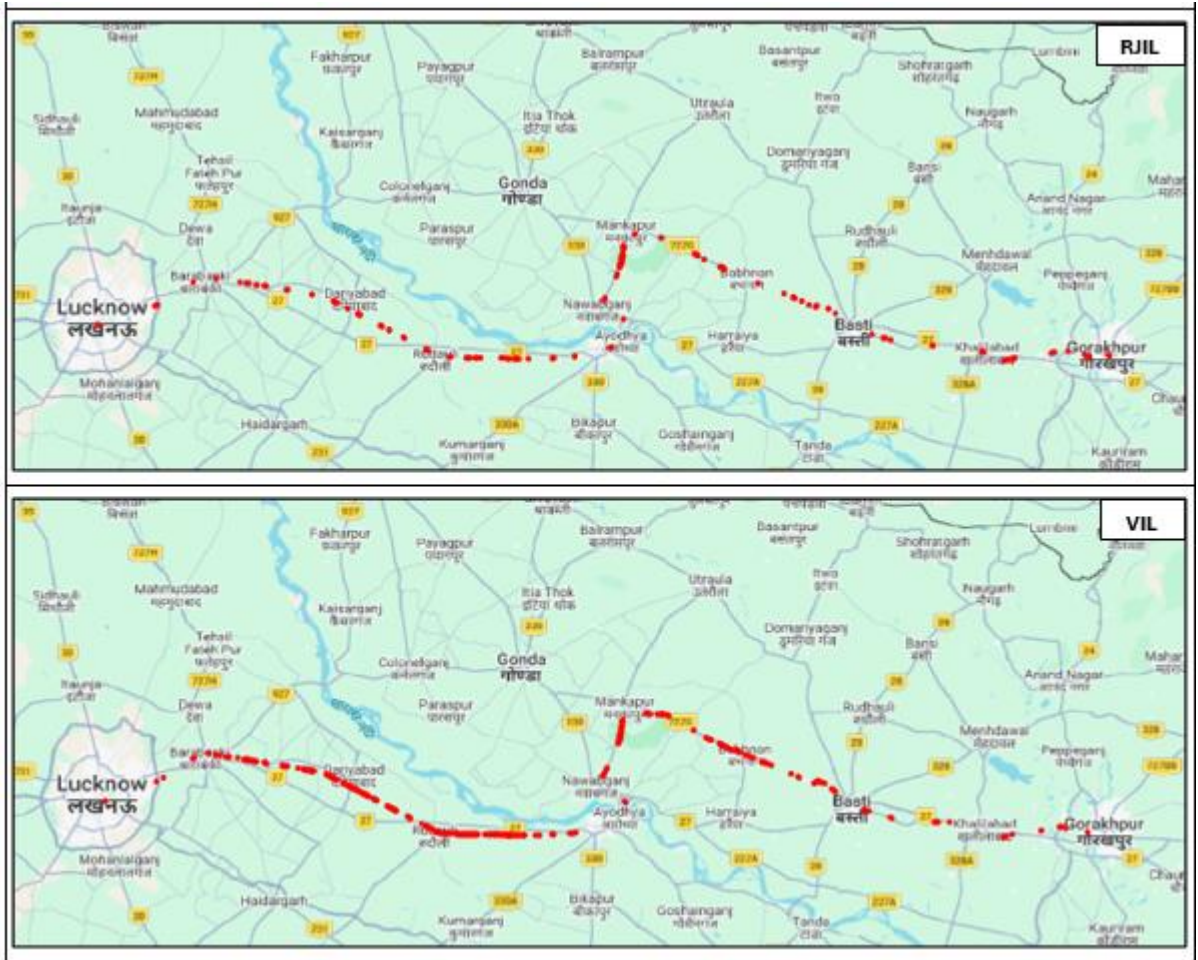
- a. **Coverage Gap** – The coverage distribution found less than the minimum specified signal strength for the drive test route in auto-selection mode (5G/4G/3G/2G) during voice testing, is as below:

Parameter	AIRTEL	BSNL	RJIL	VIL
Total Number of Samples captured on Drive test route	15568	13622	15645	15449
Number of Samples having poor signal strength	1011	6247	450	1163

Note: Signal strength has been considered poor if it falls below -110 dBm for 5G & 4G, -90 dBm for 3G, and -85 dBm for 2G.

Coverage Gap observed

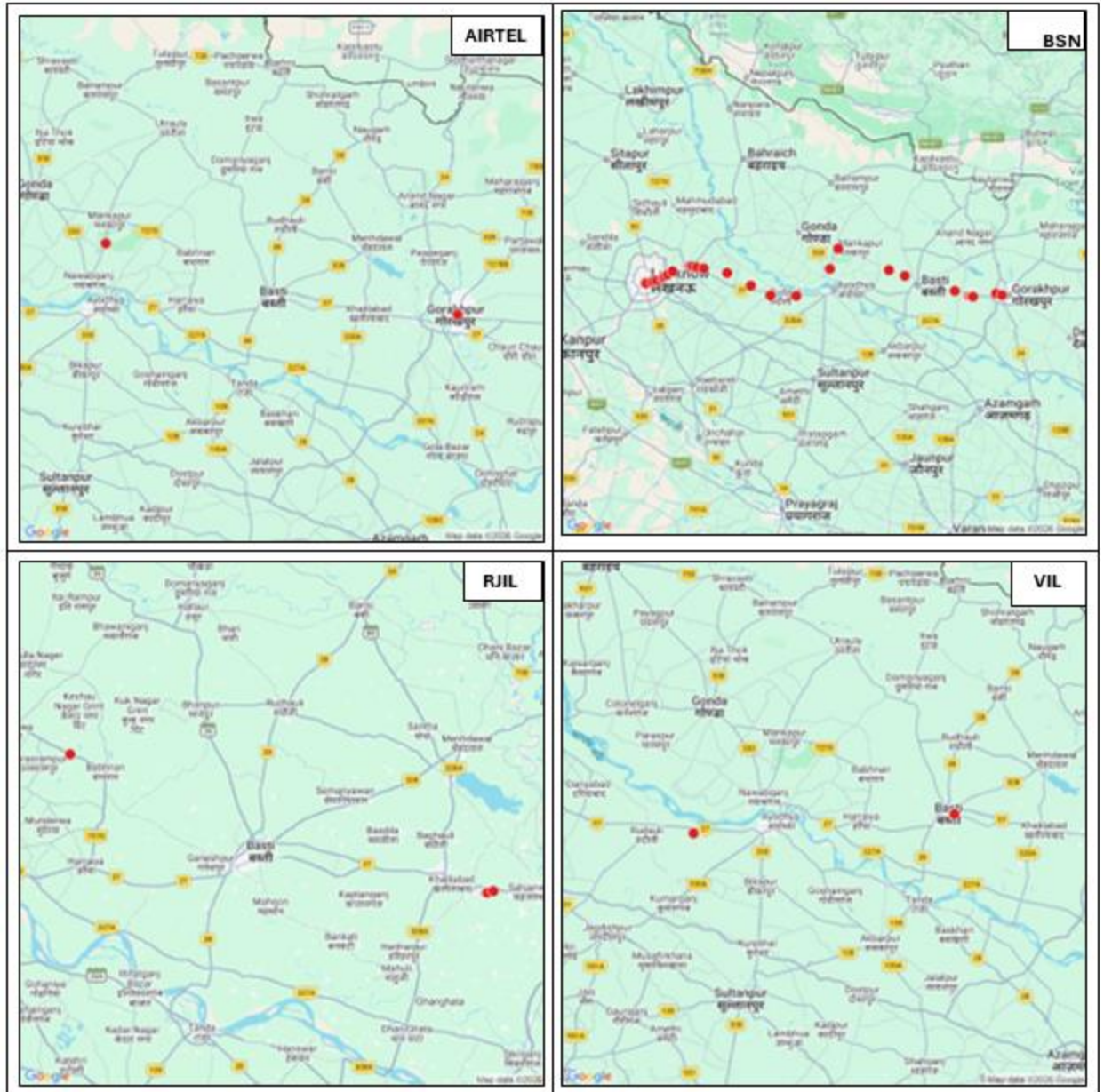




b. **Dropped Calls** - The TSP-wise details of dropped calls in auto-selection mode (5G/4G/3G/2G) are as below:

Parameter	AIRTEL	BSNL	RJIL	VIL
Number of successful Calls Established	81	78	82	79
Number of dropped Calls	2	25	4	2

Locations of Dropped Calls

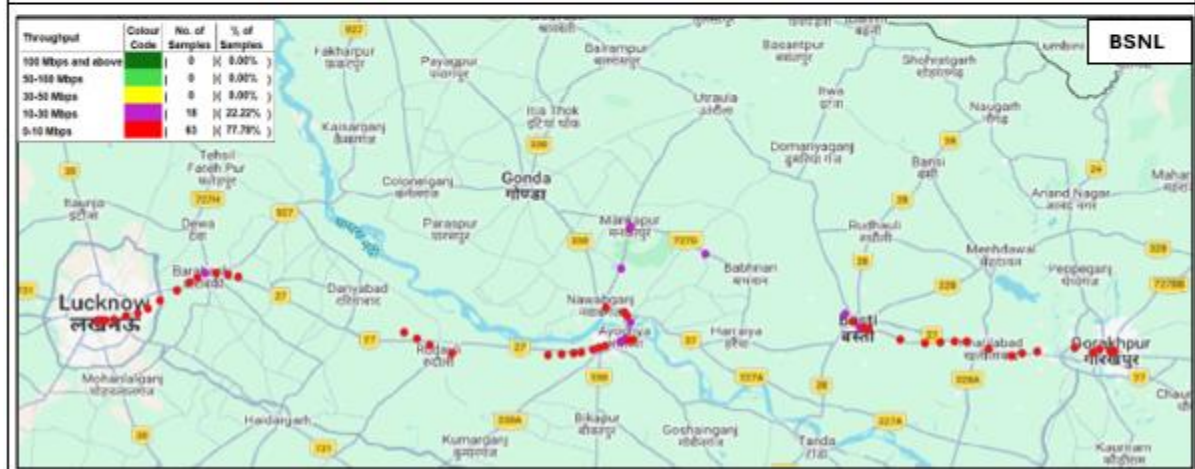
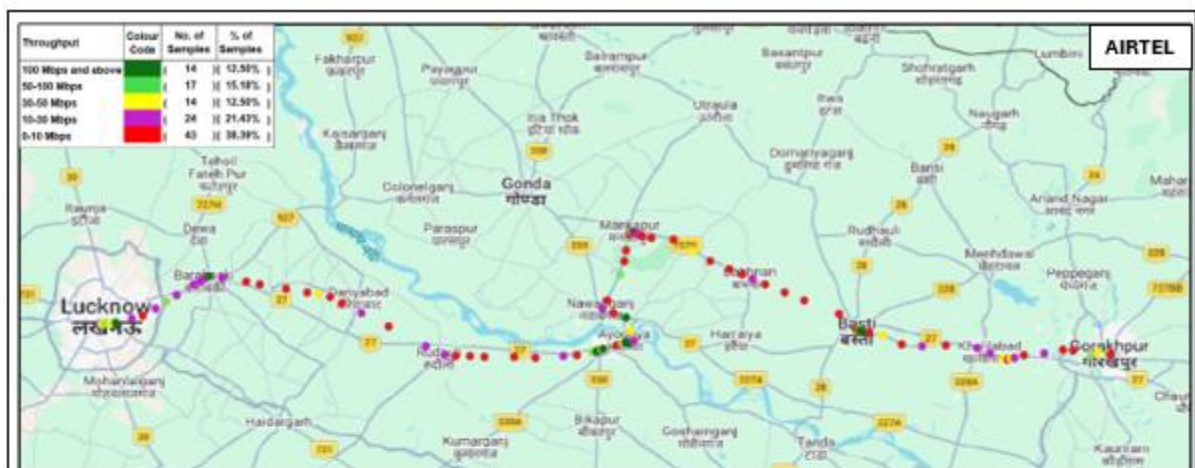


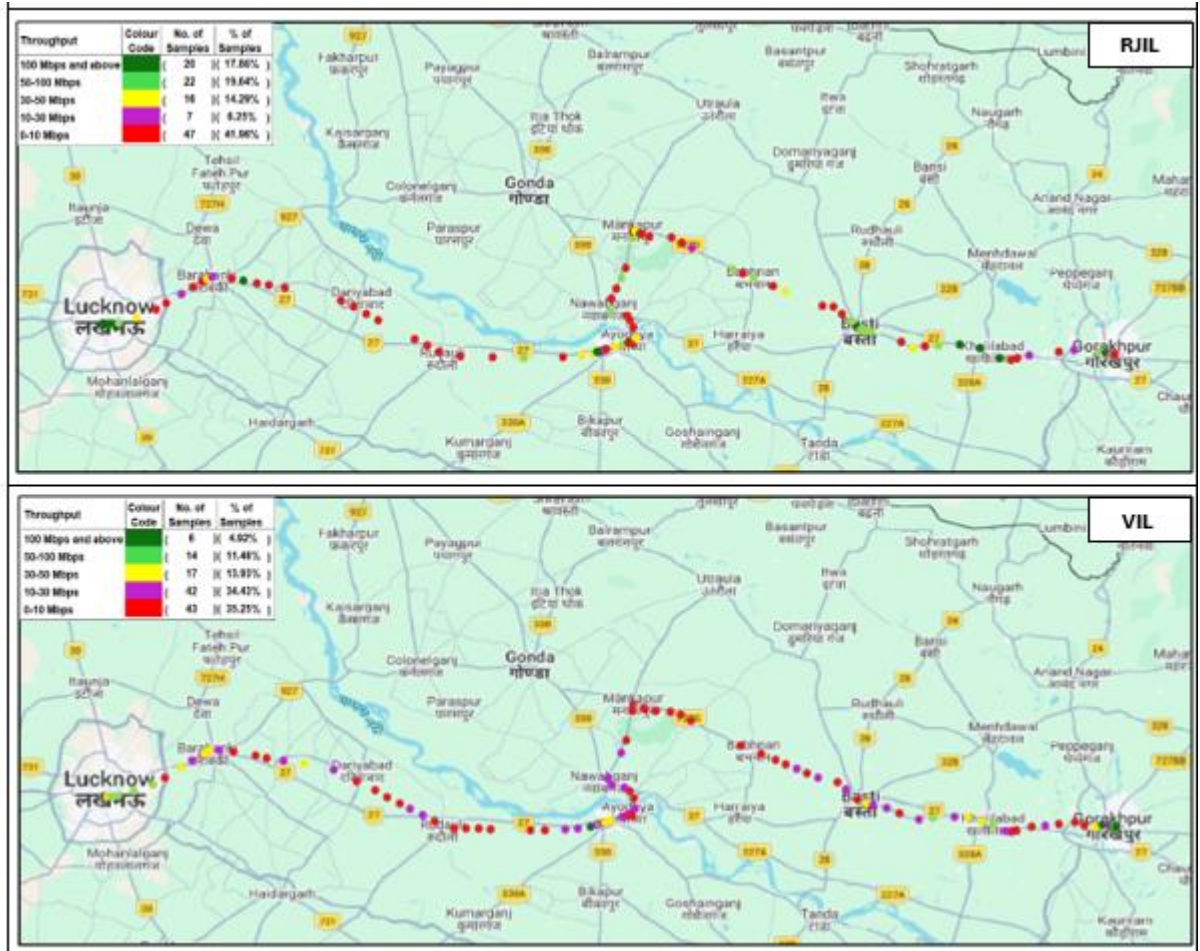
Note: Dropped calls locations are shown in red colour and which can be clicked to know the exact location (latitude and longitude) on the map.

- c. **Data Download and Upload throughput:** The TSP-wise details of **Average Download (DL)** and **Upload (UL) throughput** against declared typical DL/UL Throughput for month, in Auto-selection mode (5G/4G/3G/2G) are as below:

(i) **Download Throughput**

Parameter	Measured in	AIRTEL (upto 5G)	BSNL (upto 4G)	RJIL (upto 5G)	VIL (upto 5G)
Typical Download throughput declared by TSP	(Mbits/s)	49.00	3.46	15.00	15.00
Average Download Throughput measured during IDT	(Mbits/s)	38.73	5.53	66.38	28.51



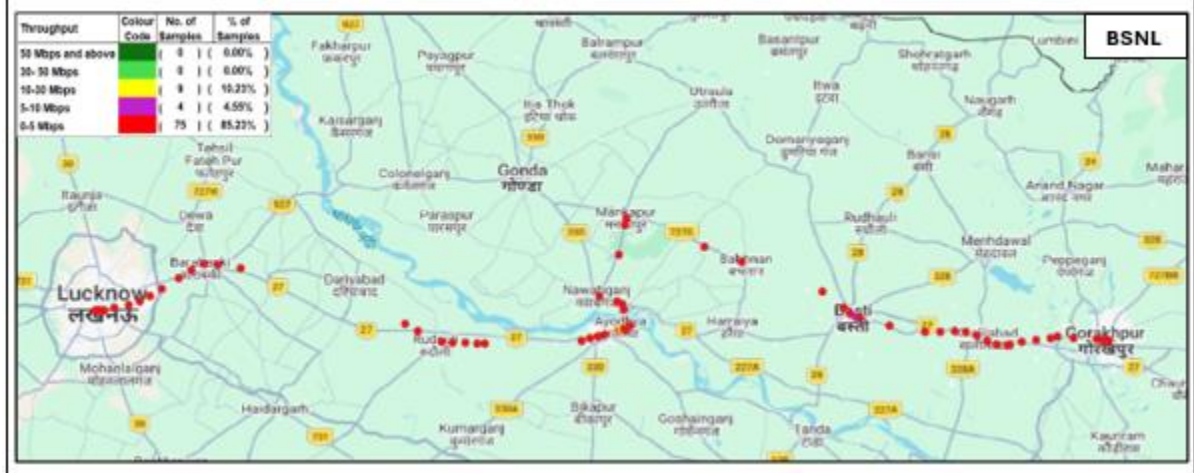


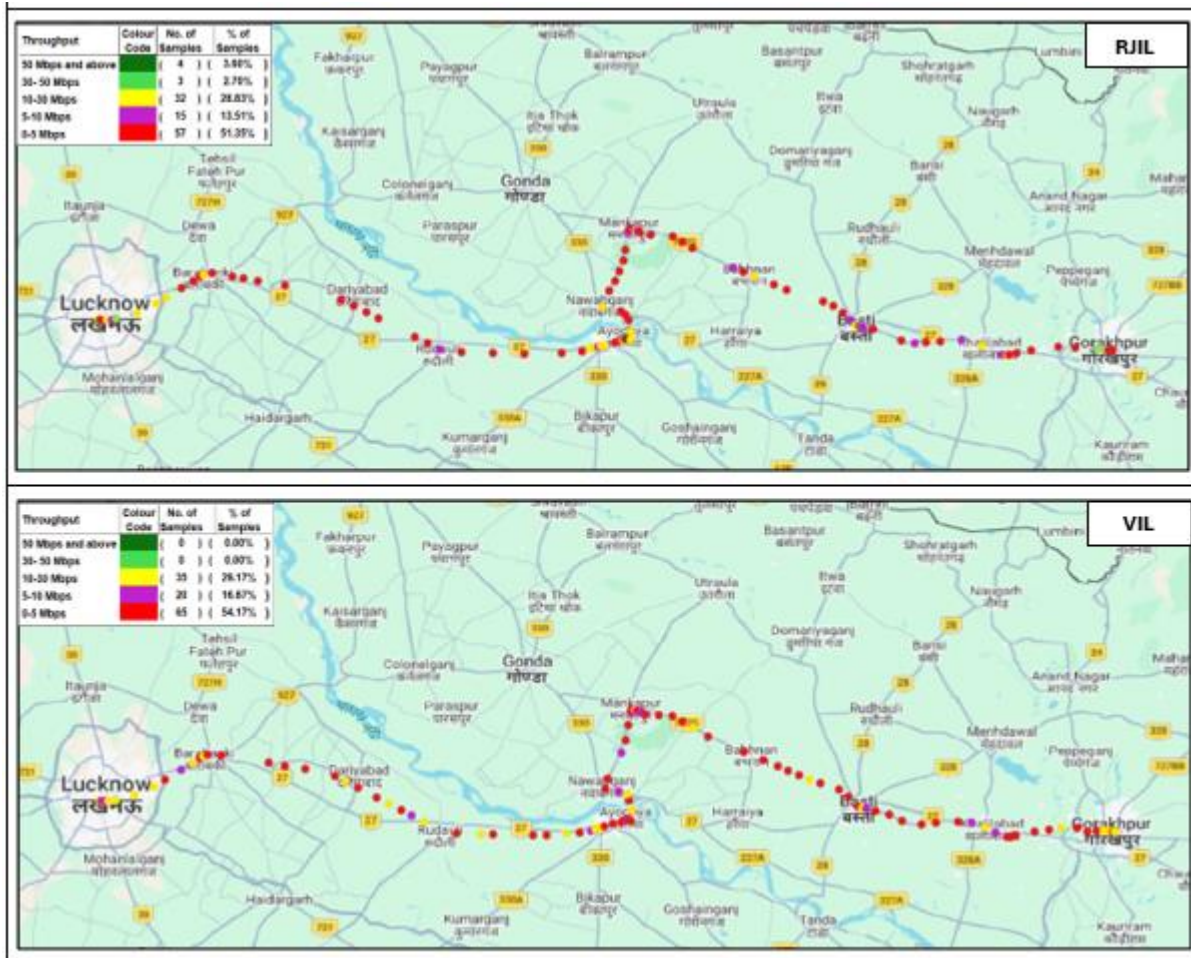
Note: Plot is based on Dynamic Drive Test results only.

(ii) Upload Throughput

Parameter	Measured in	AIRTEL (upto 5G)	BSNL (upto 4G)	RJIL (upto 5G)	VIL (upto 5G)
Typical upload throughput declared by TSP	(Mbits/s)	8.00	2.64	7.00	8.00
Average Upload Throughput measured during IDT	(Mbits/s)	10.28	3.05	10.79	7.56

--	--	--	--	--	--





Note: Plot is based on Dynamic Drive Test results only.