

Deen Dayal Upadhyaya Grameen Kaushalya Yojana (DDU-GKY)

Empowering Rural Youth and Fostering Inclusive Development

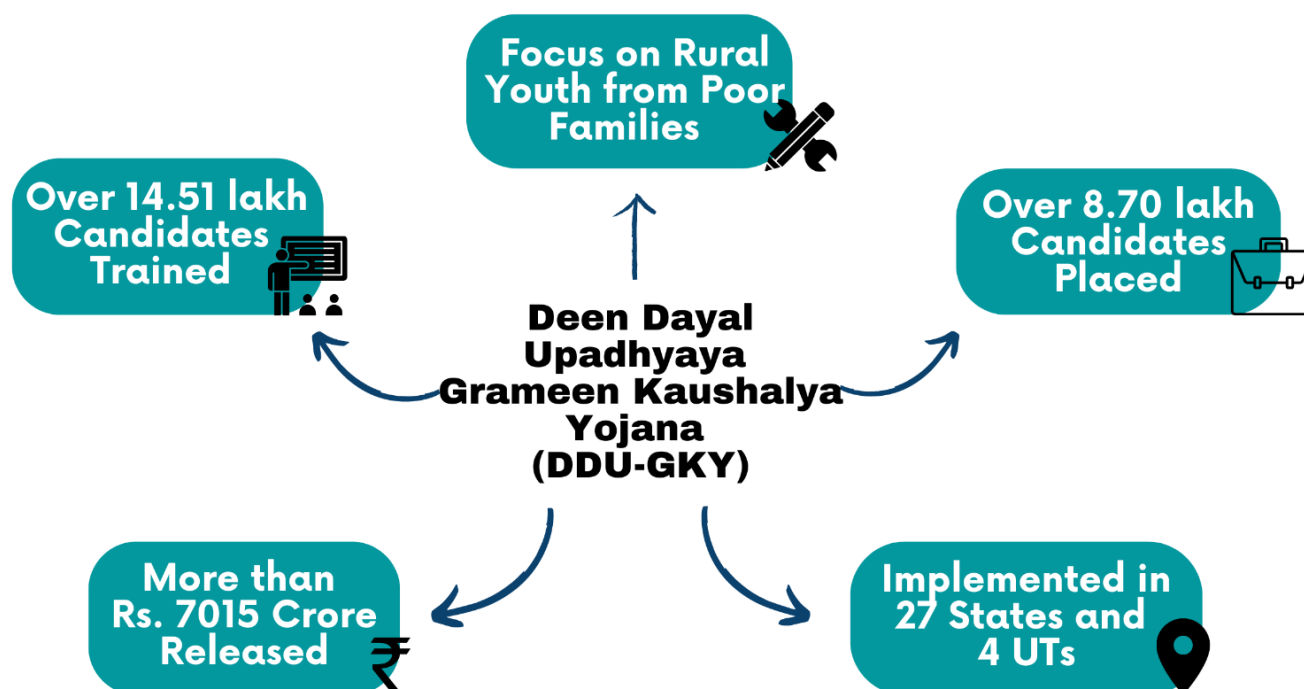
14.51 lakh candidates trained; 8.70 lakh candidates placed

More than Rs. 7015 Crore Released since inception

June 27, 2023

In a transformative move towards inclusive development and with a focus on making India's rural youth 'aatmanirbhar', the Government of India unveiled the **Deen Dayal Upadhyaya Grameen Kaushalya Yojana (DDU-GKY)** on September 25, 2014.

As a standard-led outcome-driven quality skilling program, DDU-GKY has focused on the **empowerment of rural youth through sustainable employment opportunities** and skill enhancement. With a unique emphasis on post-placement tracking, retention, and career progression, this initiative aligns perfectly with Prime Minister Narendra Modi's vision of 'Make in India' and positioning India as the globally preferred manufacturing hub.



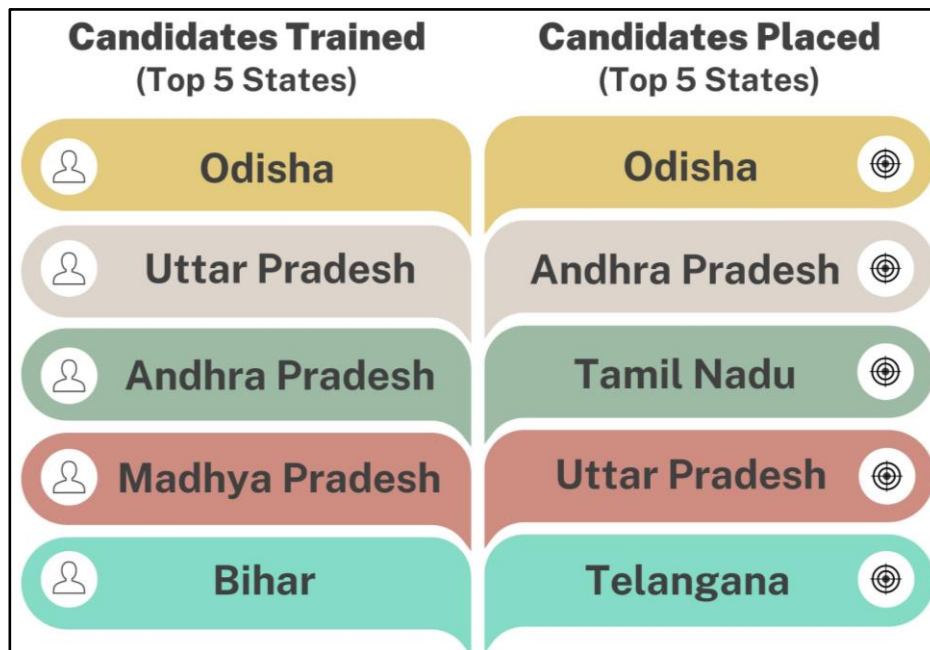
DDU-GKY is currently being implemented in **27 States and 4 UTs** for rural youth from poor families with an emphasis on placements. More than **877 Project Implementation Agencies (PIAs)** are training rural poor youth across **37 sectors and 616 job roles** through more than **2,369 training centres**.

Since inception, a total of **14.51 lakh candidates have been trained** and **8.70 lakh candidates placed** under the programme (as on May 31, 2023). Further, a sum of **Rs. 7015.61 Crore has been released** under DDU-GKY (as on April 30, 2023).

DDU-GKY prioritizes the most marginalized sections of society, mandating coverage of socially disadvantaged groups (50% for SC/ST, 15% for minorities, and 33% for women). It

also extends a special focus to manual scavengers, persons with disabilities, and women-headed households.

The top five states in terms of the candidates trained and the candidates placed under DDU-GKY are depicted below:



The government's commitment to transparency, financial discipline, and anti-corruption measures ensures that the benefits of DDU-GKY reach the neediest. DDU-GKY has become a testament to the power of skill development and inclusive growth.

To see the state-wise cumulative date, [CLICK HERE](#)

Sources:

- [DDU-GKY - FAQs](#)
- [DDU-GKY Dashboard](#)

NR/HP/SPN/SK