

Deen Dayal Upadhyaya Grameen Kaushalya Yojana: Empowering Rural Youth in Chhattisgarh

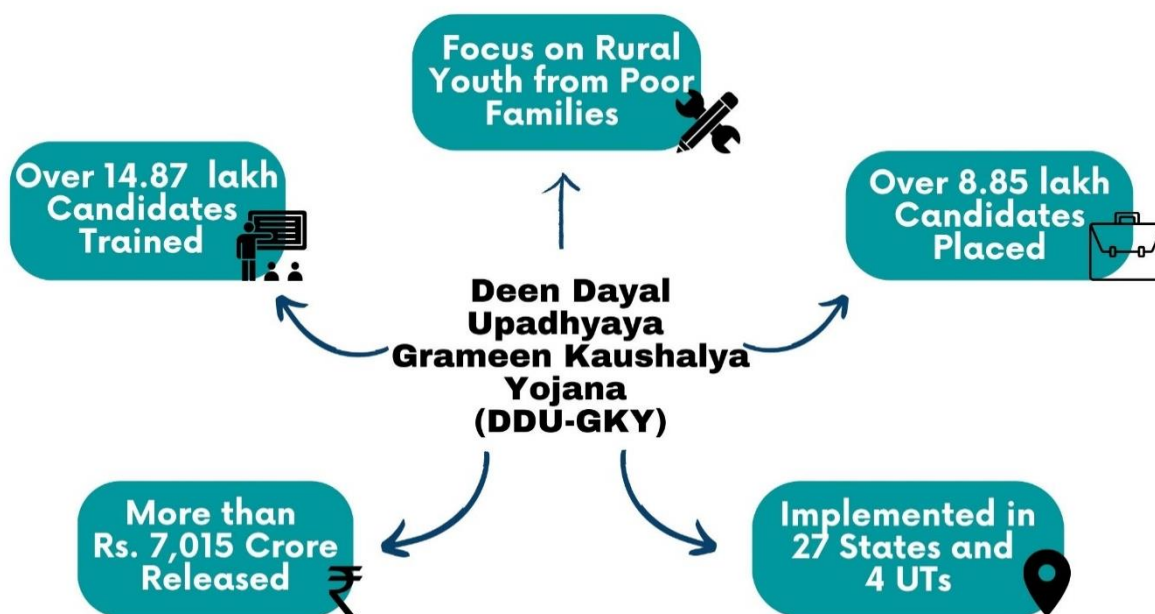
61,199 Candidates Trained; 51,437 Candidates Assessed; 32,513 Candidates Placed

(Ministry of Rural Development)

August 24, 2023

In a transformative move towards inclusive development and with a focus on making India's rural youth 'aatmanirbhar', the Government of India unveiled the Deen Dayal Upadhyaya Grameen Kaushalya Yojana (DDU-GKY) on September 25, 2014. As a standard-led outcome-driven quality skilling program, DDU-GKY has focused on the empowerment of rural youth through sustainable employment opportunities and skill enhancement.

Since inception, a total of **14.87 lakh** candidates have been trained and **8.85 lakh** candidates placed under the programme (as on August 01, 2023). Further, a sum of **Rs. 7015.61 Crore** has been released under DDU-GKY (as on April 30, 2023).



as on August 01, 2023

DDU-GKY prioritizes the most marginalized sections of society, mandating coverage of socially disadvantaged groups (50% for SC/ST, 15% for minorities, and 33% for women). It also extends a special focus to manual scavengers, persons with disabilities, and women-headed households.

DDU-GKY: Progress in Chhattisgarh

DDU-GKY's journey in Chhattisgarh is marked by the significant strides it has made in skilling the rural youth. As on August 01, 2023, a total of **61,199 candidates have been trained, 51,437 candidates have been assessed** and more than **32,500 candidates have been successfully placed** in diverse job roles under the programme.

DDU-GKY: Chhattisgarh



as on August 01, 2023

By providing the necessary skills and opportunities for a brighter future, Central Government is empowering the rural youth in Chhattisgarh. DDU-GKY programme serves as a testament to the commitment of the Government of India to uplift its citizens and contribute to the overall growth and development of Chhattisgarh.

To see success stories of DDU-GKY in Chhattisgarh, [Click Here](#)

References:

- <https://dashboard.rural.nic.in/dashboardnew/ddugky.aspx>
- <https://pib.gov.in/FactsheetDetails.aspx?Id=148966>
- <https://cgddugky.digitalbihan.com/power/index2.html>
- <https://bihan.gov.in/DDUGKY/index.html>

NR/HP/RK/SPN/SS