

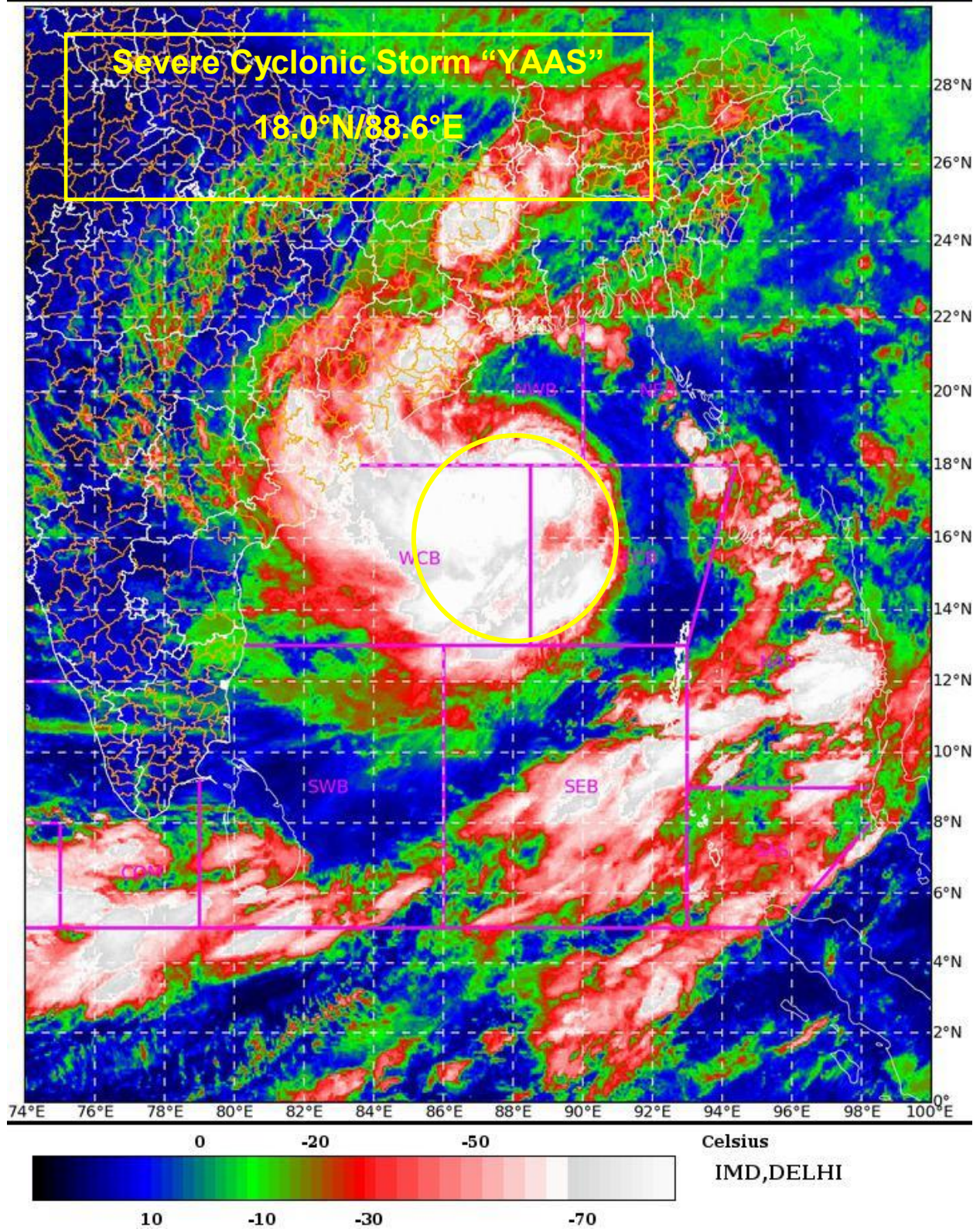
SAT : INSAT-3D IMG

25-05-2021/(0000 to 0026) GMT

IMG_TIR1_TEMP 10.8 um

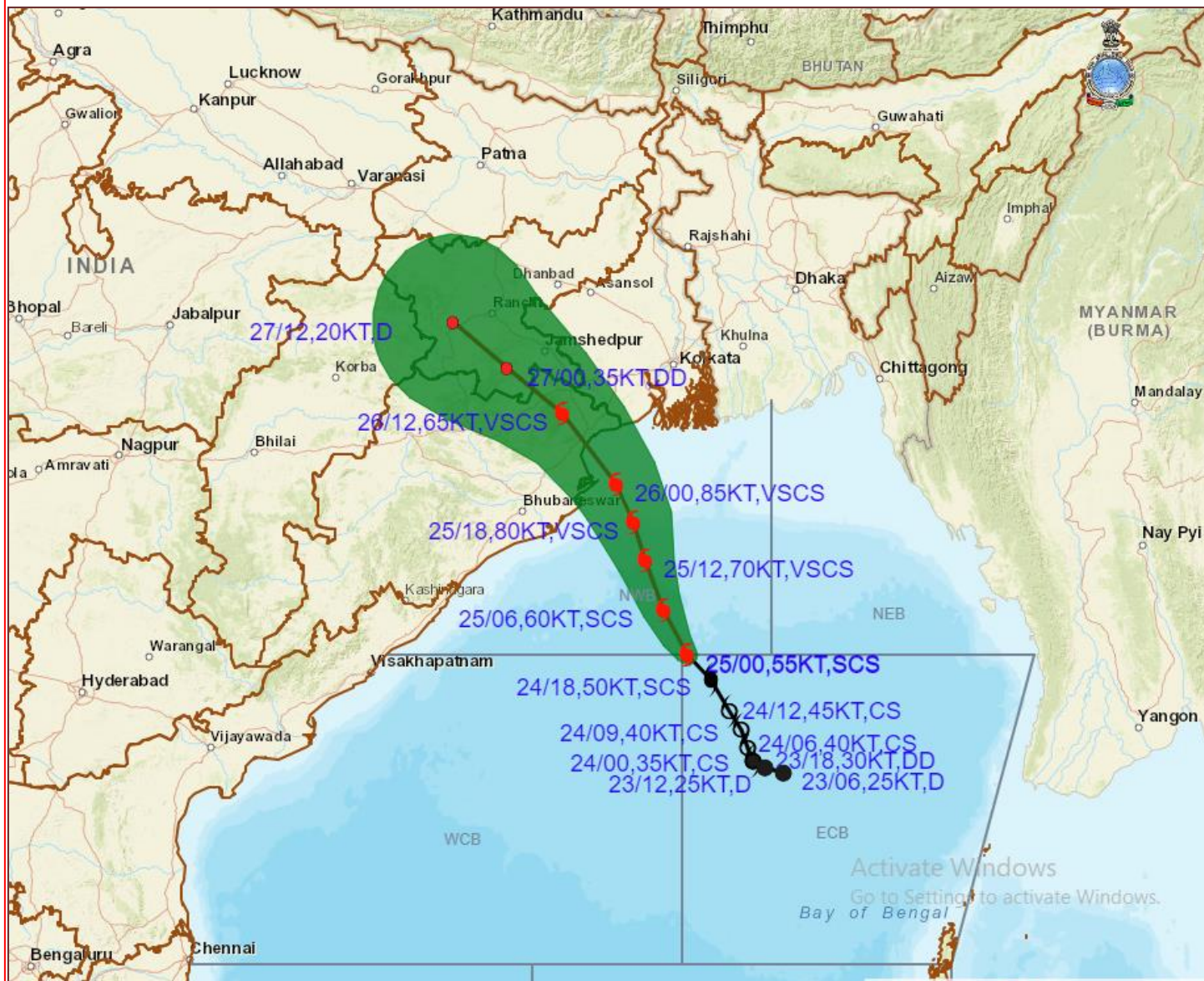
25-05-2021/(0530 to 0556) IST

L1C Mercator





OBSERVED AND FORECAST TRACK ALONGWITH CONE OF UNCERTAINTY OF SEVERE CYCLONIC STORM "YAAS" OVER EASTCENTRAL BAY OF BENGAL BASED ON 0000 UTC OF 25th MAY, 2021



DATE/TIME IN UTC

IST=UTC + 0530

L: LOW PRESSURE AREA

WML: WELL MARKED LOW PRESSURE AREA

D: DEPRESSION (17-27 KT)

DD: DEEP DEPRESSION (28-33 KT)

CS: CYCLONIC STORM (34-47 KT)

SCS: SEVERE CYCLONIC STORM (48-63KT)

VSCS: VERY SEVERE CYCLONIC STORM (64-89 KT)

ESCS: EXTREMELY SEVERE CYCLONIC STORM (90-119 KT)

SuCS: SUPER CYCLONIC STORM \geq 120 KT)

● LESS THAN 34 KT

○ 34-47 KT

○ \geq 48 KT

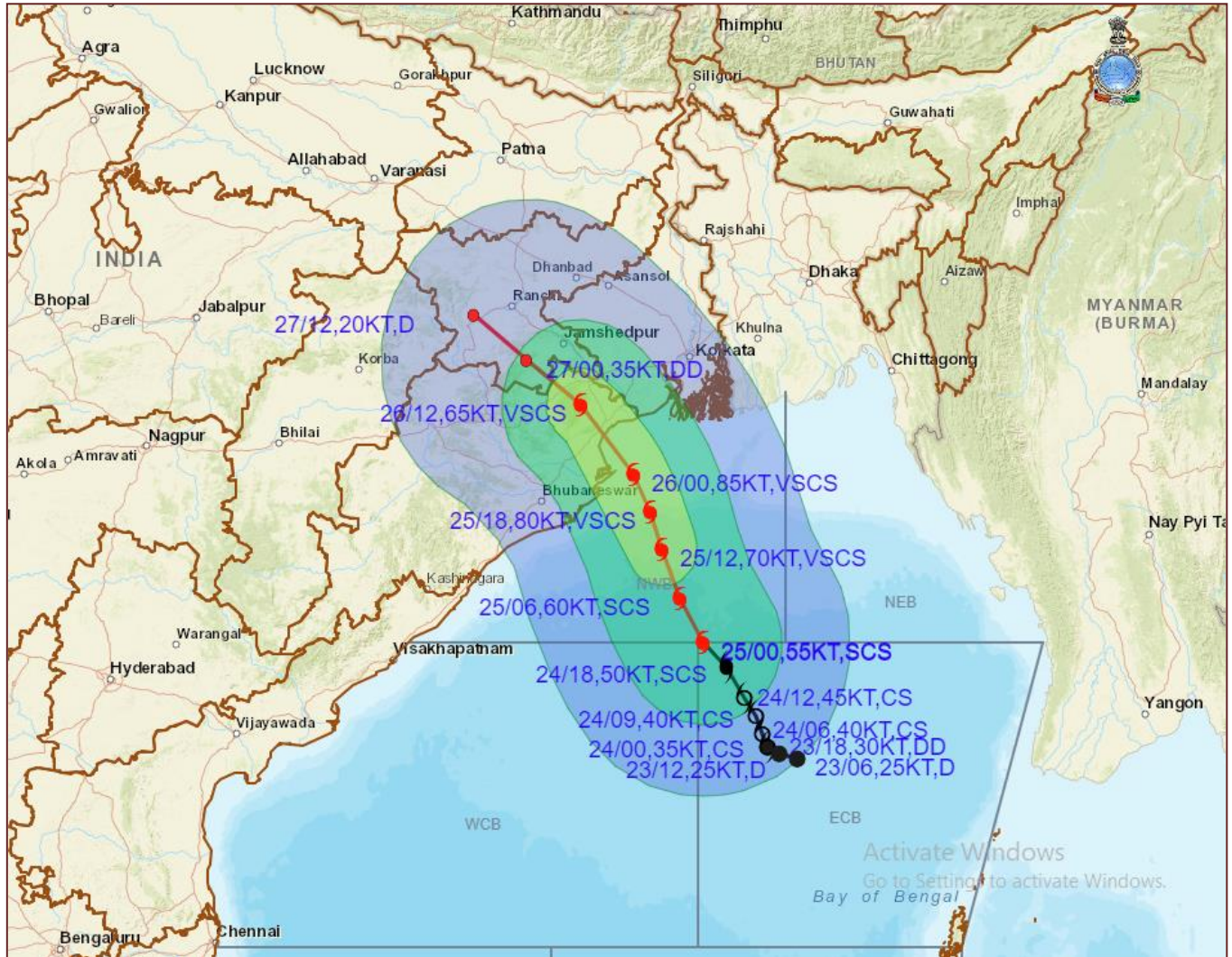
— OBSERVED TRACK

— FORECAST TRACK

▲ CONE OF UNCERTAINTY



OBSERVED AND FORECAST TRACK ALONGWITH QUADRANT WIND DISTRIBUTION OF SEVERE CYCLONIC STORM “YAAS” OVER EASTCENTRAL BAY OF BENGAL BASED ON 0000 UTC OF 25th MAY, 2021



DATE/TIME IN UTC

IST=UTC + 0530

L: LOW PRESSURE AREA

WML: WELL MARKED LOW PRESSURE AREA

D: DEPRESSION (17-27 KT)

DD: DEEP DEPRESSION (28-33 KT)

CS: CYCLONIC STORM (34-47 KT)

SCS: SEVERE CYCLONIC STORM (48-63 KT)

VSCS: VERY SEVERE CYCLONIC STORM (64-89 KT)

ESCS: EXTREMELY SEVERE CYCLONIC STORM (90-119 KT)

SuCS: SUPER CYCLONIC STORM (≥ 120 KT)

● LESS THAN 34 KT

● 34-47 KT

● ≥ 48 KT

— OBSERVED TRACK

— FORECAST TRACK

▲ CONE OF UNCERTAINTY

AREA OF MAXIMUM SUSTAINED WIND SPEED:

■ 28-33 KT (52-61 KMPH)

■ 34-49 KT (62-91 KMPH)

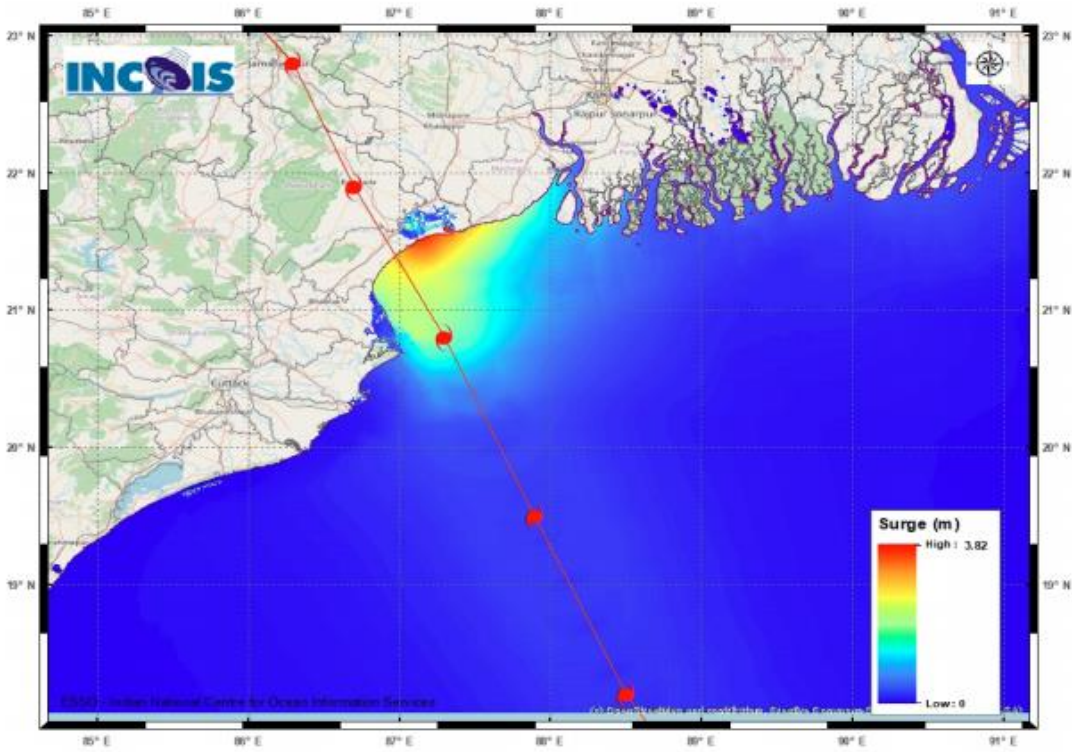
■ 50-63 KT (92-117 KMPH)

■ ≥ 64 KT (≥ 118 KMPH)

IMPACT OVER THE SEA

| MSW (knot/kmph) | Impact | Action |
|-----------------|------------------------|--|
| 28-33 (52-61) | Very rough seas | Total suspension of fishing operations |
| 34-49 (62-91) | High to very high seas | Total suspension of fishing operations |
| 50-63 (92-117) | Very high seas | Total suspension of fishing operations |
| ≥ 64 (≥ 118) | Phenomenal | Total suspension of fishing operations |

Storm Surge Forecast around the time of Landfall:

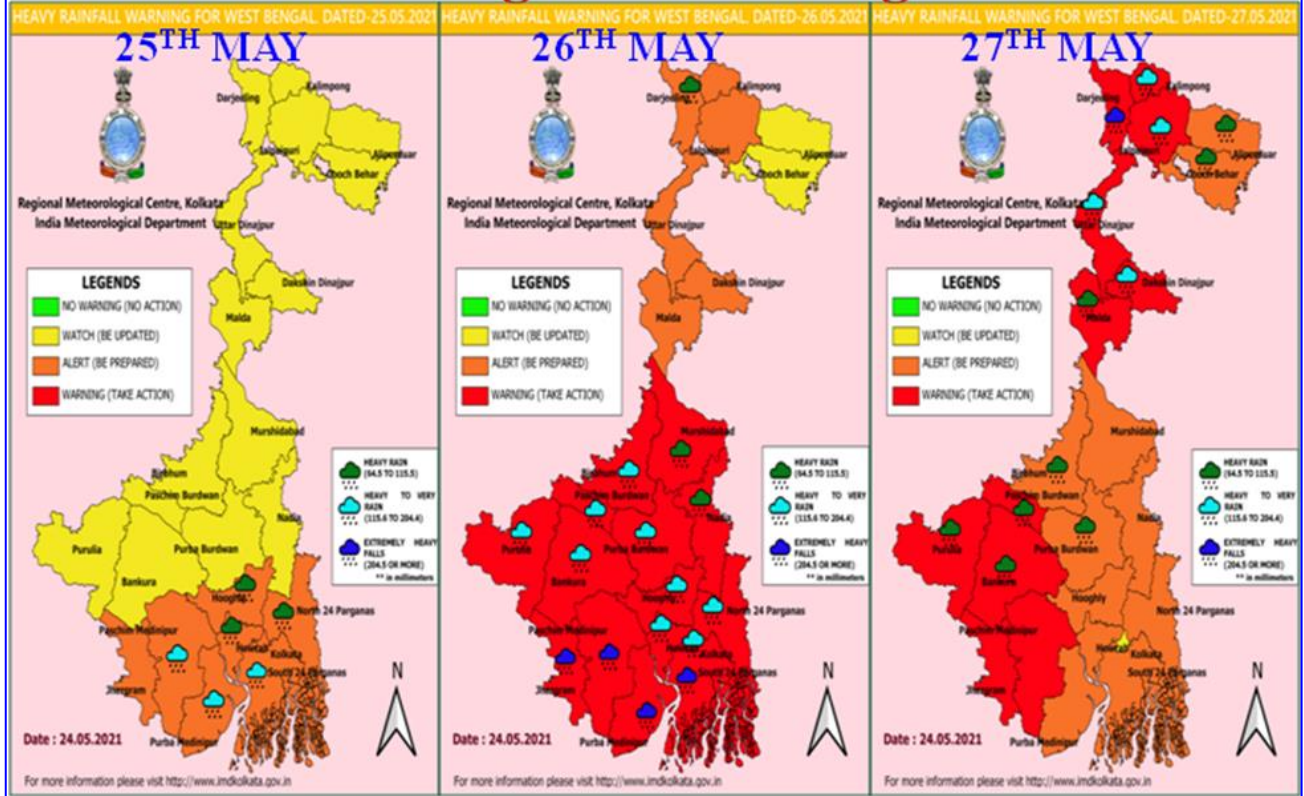


STORM SURGE HEIGHT INFORMATION:

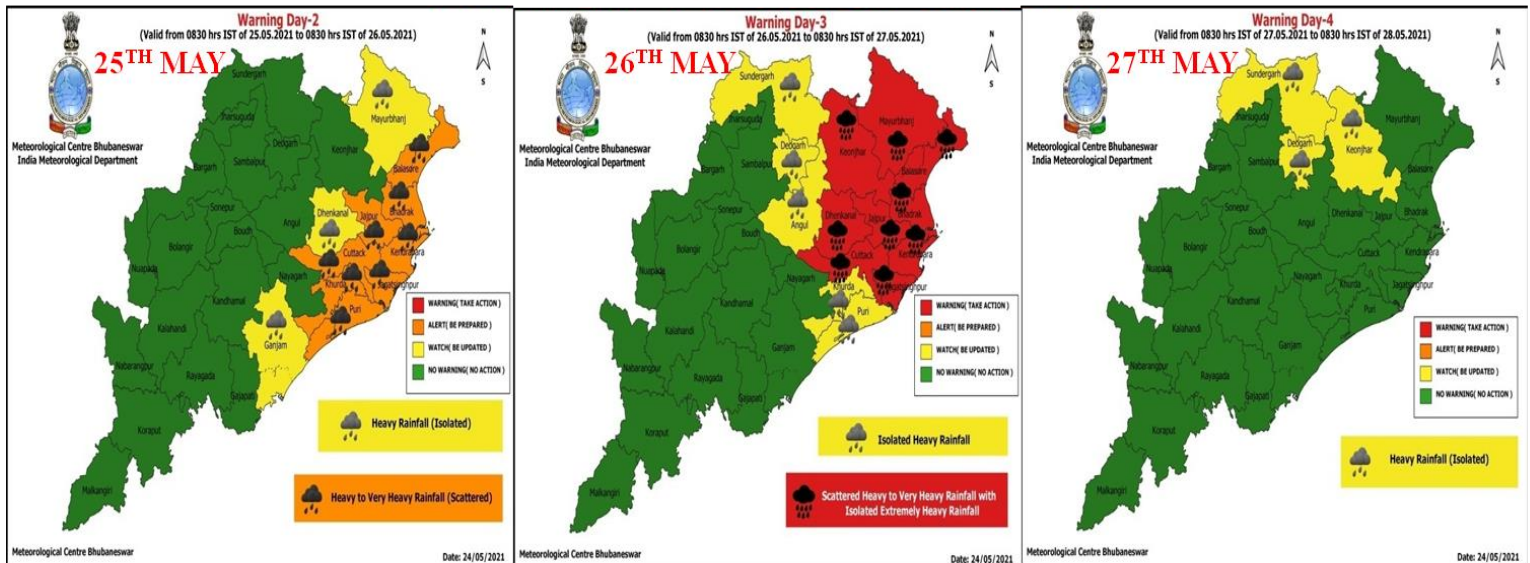
* The below listed surge heights are over and above astronomical tide.

| MANDAL/TALUK | DISTRICT | STATE / UNION TERRITORY | NEAREST PLACE OF HABITATION | STORM SURGE (m) * | EXPECTED INUNDATION EXTENT (km) |
|-----------------|-------------------|-------------------------|-----------------------------|----------------------|---------------------------------|
| Baleshwar | Baleshwar | Odisha | Kumbhargiri | 2.1-3.8 | Upto 2.33 |
| Basirhat | North 24 Parganas | West Bengal | Amlamethi | 0.5-0.9 | Upto 0.37 |
| Bhadrak | Bhadrak | Odisha | Mohanpur | 0.9-2.1 | Upto 7.02 |
| Diamond Harbour | South 24 Parganas | West Bengal | Pashchim Bhabanipur | 0.5-1.1 | Upto 0.78 |
| Kanthi | Purba Medinipur | West Bengal | Safar Chata | 0.5-2.9 | Upto 1.50 |
| Kendraparha | Kendrapara | Odisha | Tikayat Nagar | 0.5-1.5 | Upto 2.64 |
| Tamluk | Purba Medinipur | West Bengal | Jamitta | 0.5-1.3 | Upto 0.42 |
| Uluberiya | Haora | West Bengal | Orphuli | 0.5-0.8 | Upto 0.44 |

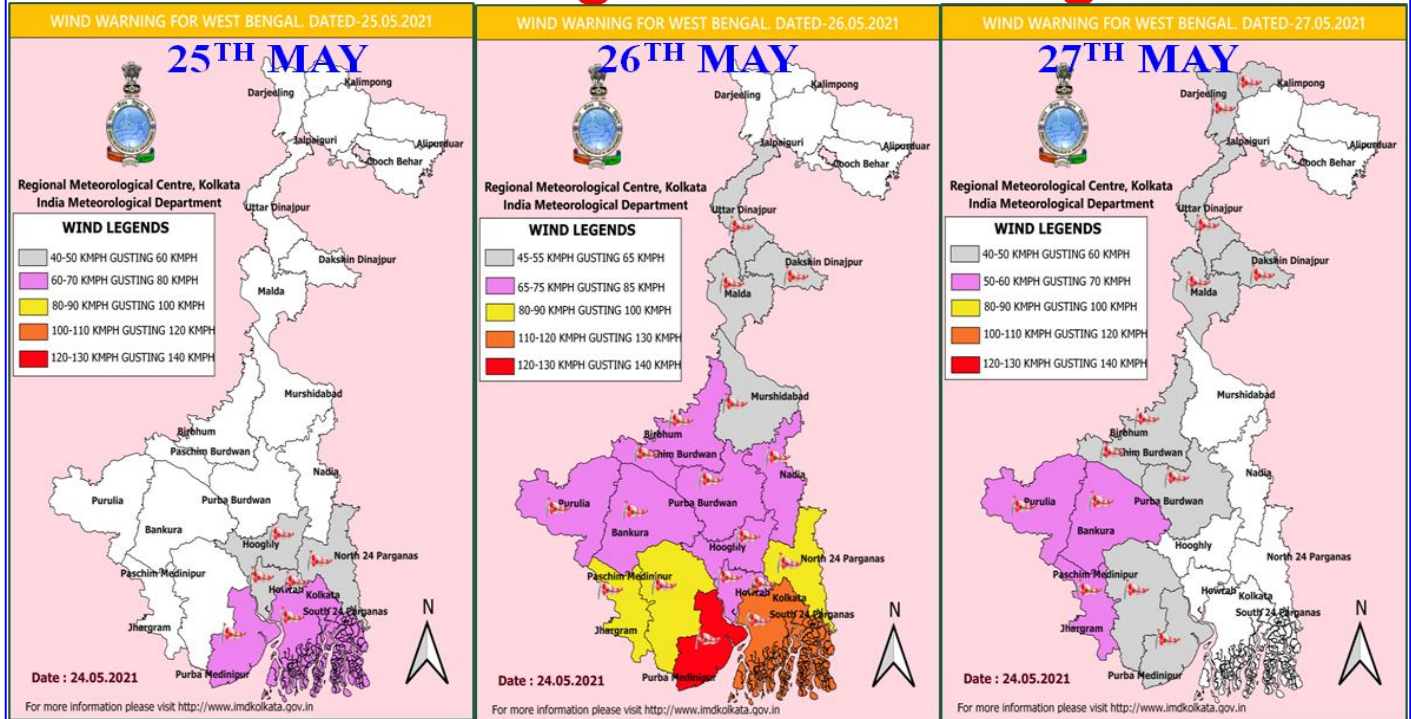
Rainfall warning for West Bengal & Sikkim



Rainfall forecast Odisha



Wind warning for West Bengal



Wind warning for Odisha

