

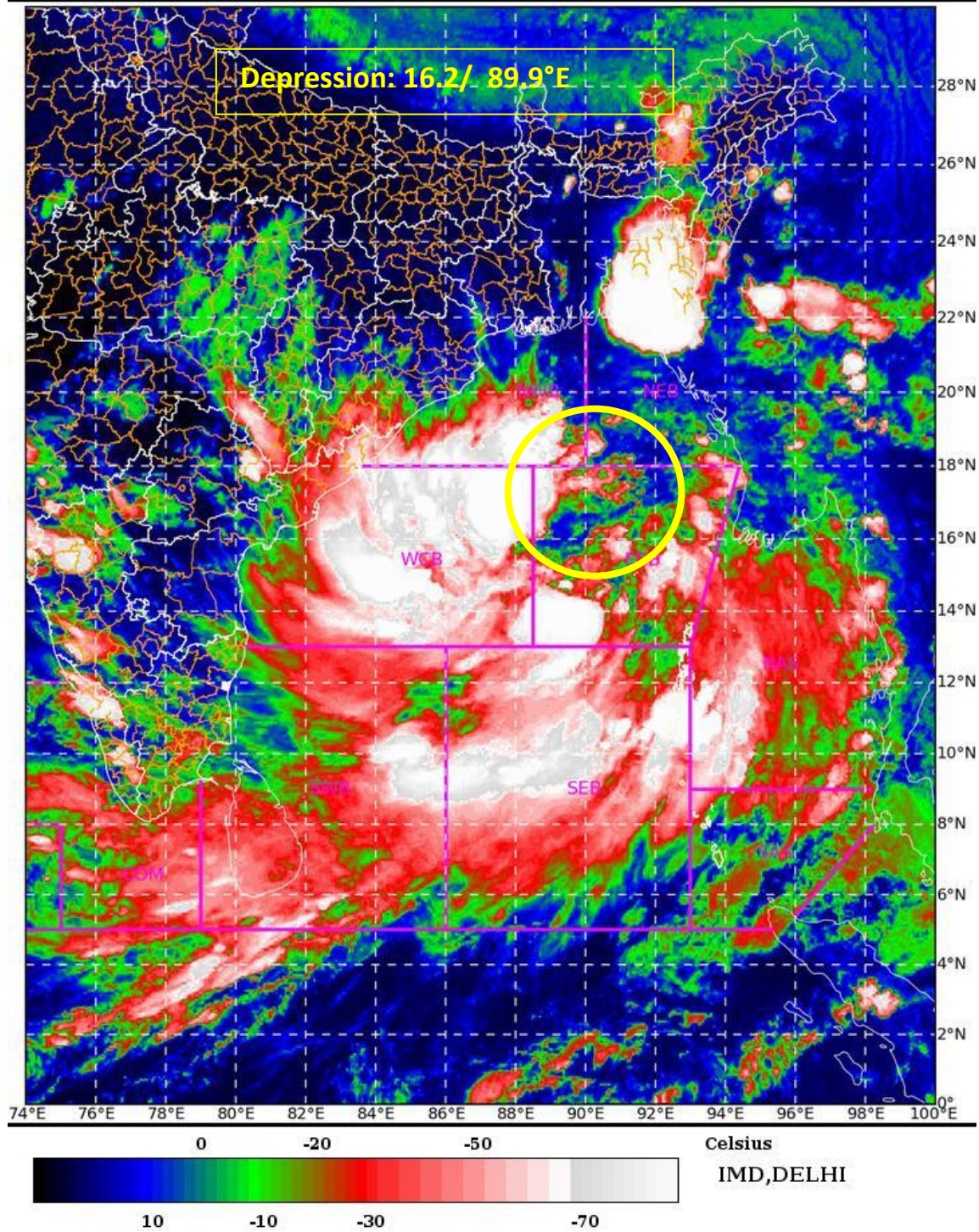
SAT : INSAT-3D IMG

23-05-2021/(1300 to 1326) GMT

IMG\_TIR1\_TEMP 10.8 um

23-05-2021/(1830 to 1856) IST

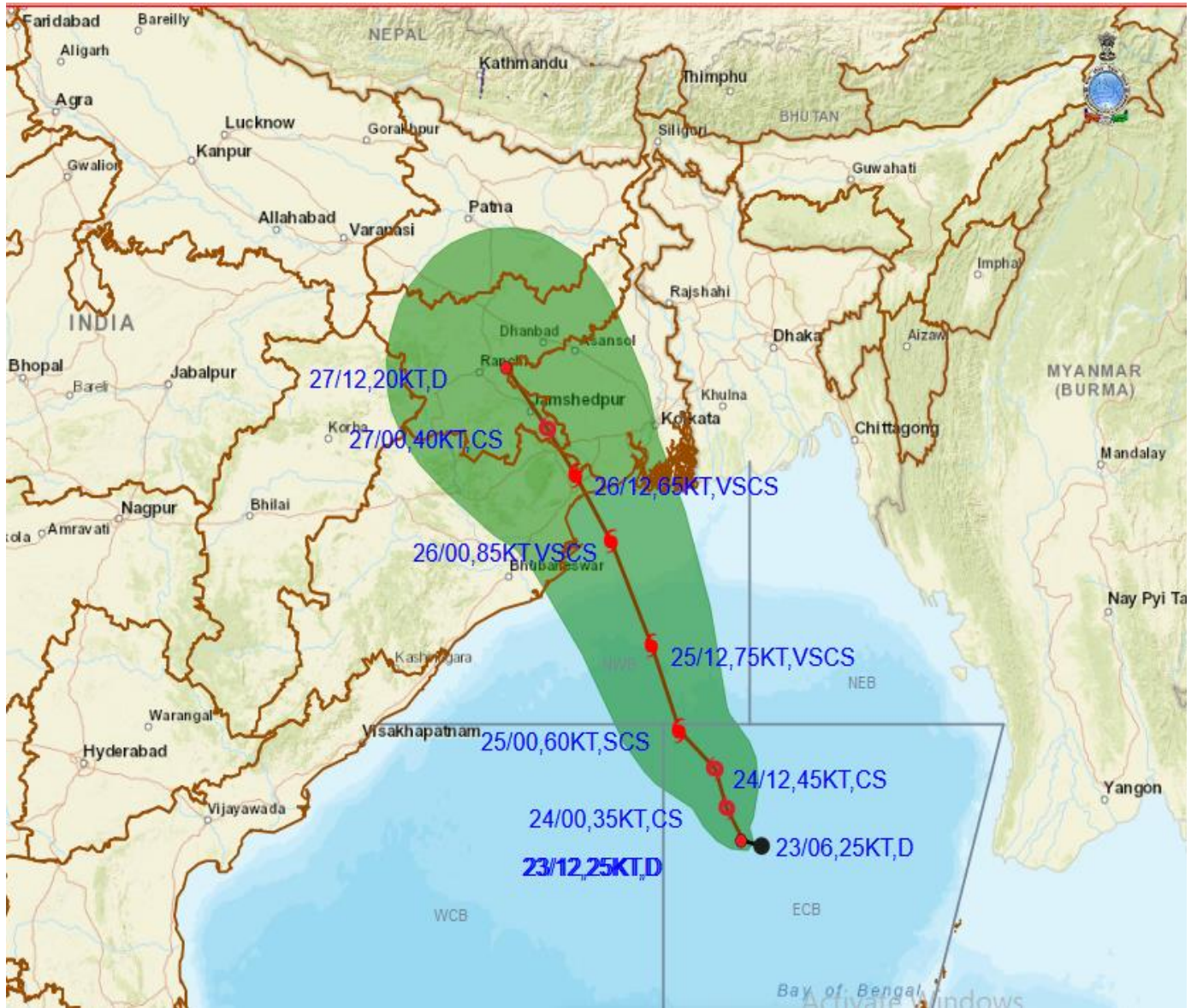
L1C Mercator







## OBSERVED AND FORECAST TRACK ALONGWITH CONE OF UNCERTAINTY OF DEPRESSION OVER EASTCENTRAL BAY OF BENGAL BASED ON 1200 UTC OF



### DATE/TIME IN UTC

IST=UTC + 0530

L: LOW PRESSURE AREA

WML: WELL MARKED LOW PRESSURE AREA

D: DEPRESSION (17-27 KT)

DD: DEEP DEPRESSION (28-33 KT)

CS: CYCLONIC STORM (34-47 KT)

SCS: SEVERE CYCLONIC STORM (48-63KT)

VSCS: VERY SEVERE CYCLONIC STORM (64-89 KT)

ESCS: EXTREMELY SEVERE CYCLONIC STORM (90-119 KT)

SuCS: SUPER CYCLONIC STORM ( $\geq 120$  KT)



LESS THAN 34 KT



34-47 KT



$\geq 48$  KT



OBSERVED TRACK



FORECAST TRACK

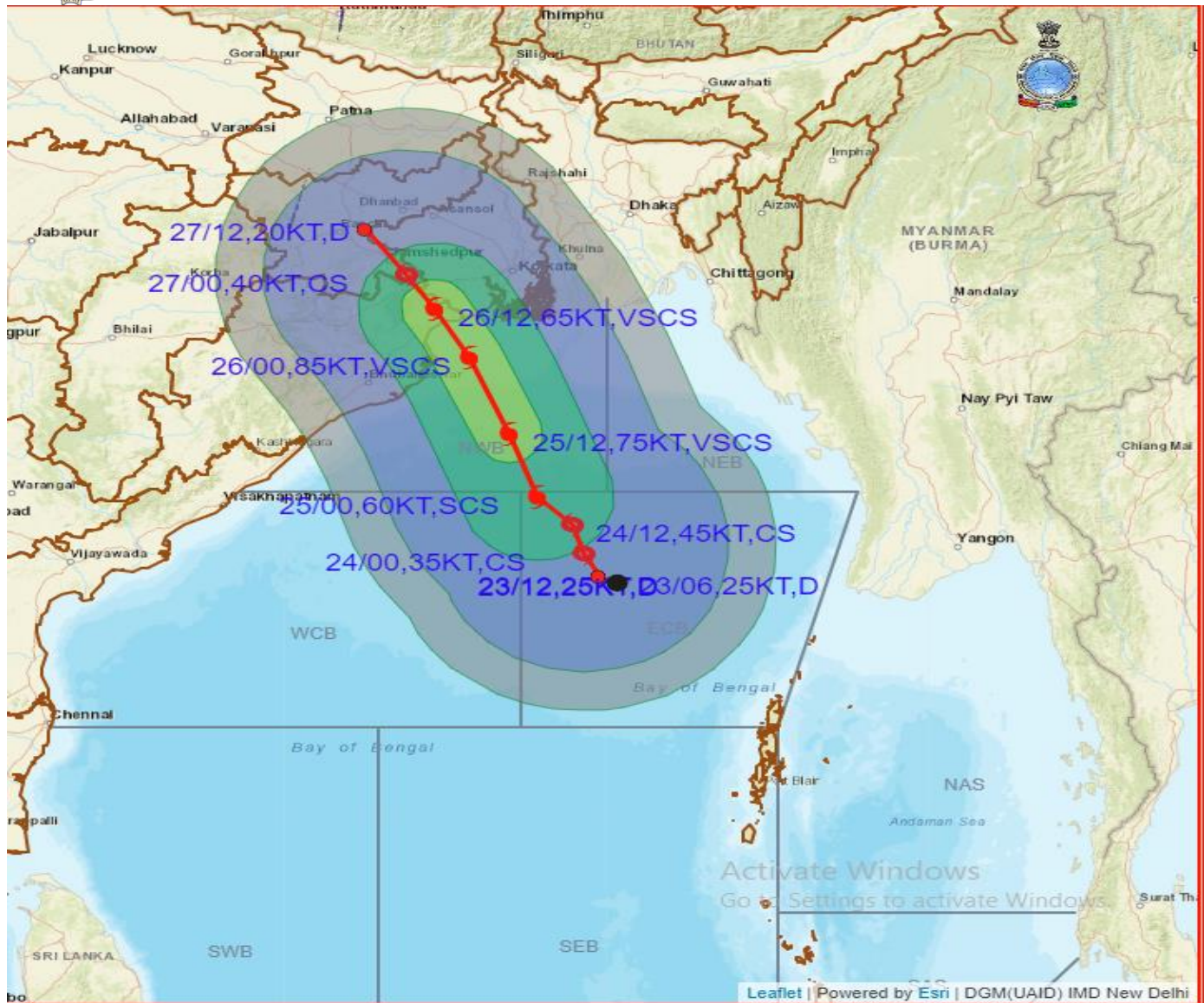


CONE OF UNCERTAINTY





# OBSERVED AND FORECAST TRACK ALONGWITH QUADRANT WIND DISTRIBUTION OF DEPRESSION OVER EASTCENTRAL BAY OF BENGAL BASED ON 1200 UTC OF 23<sup>RD</sup> MAY, 2021



DATE/TIME IN UTC

IST=UTC + 0530

L: LOW PRESSURE AREA

WML: WELL MARKED LOW PRESSURE AREA

D: DEPRESSION (17-27 KT)

DD: DEEP DEPRESSION (28-33 KT)

CS: CYCLONIC STORM (34-47 KT)

SCS: SEVERE CYCLONIC STORM (48-63 KT)

VSCS: VERY SEVERE CYCLONIC STORM (64-89 KT)

ESCS: EXTREMELY SEVERE CYCLONIC STORM (90-119 KT)

SuCS: SUPER CYCLONIC STORM (≥ 120 KT)

● LESS THAN 34 KT

○ 34-47 KT

● ≥ 48 KT

— OBSERVED TRACK

— FORECAST TRACK

▲ CONE OF UNCERTAINTY

AREA OF MAXIMUM SUSTAINED WIND SPEED:

■ 28-33 KT (52-61 KMPH)

■ 34-49 KT (62-91 KMPH)

■ 50-63 KT (92-117 KMPH)

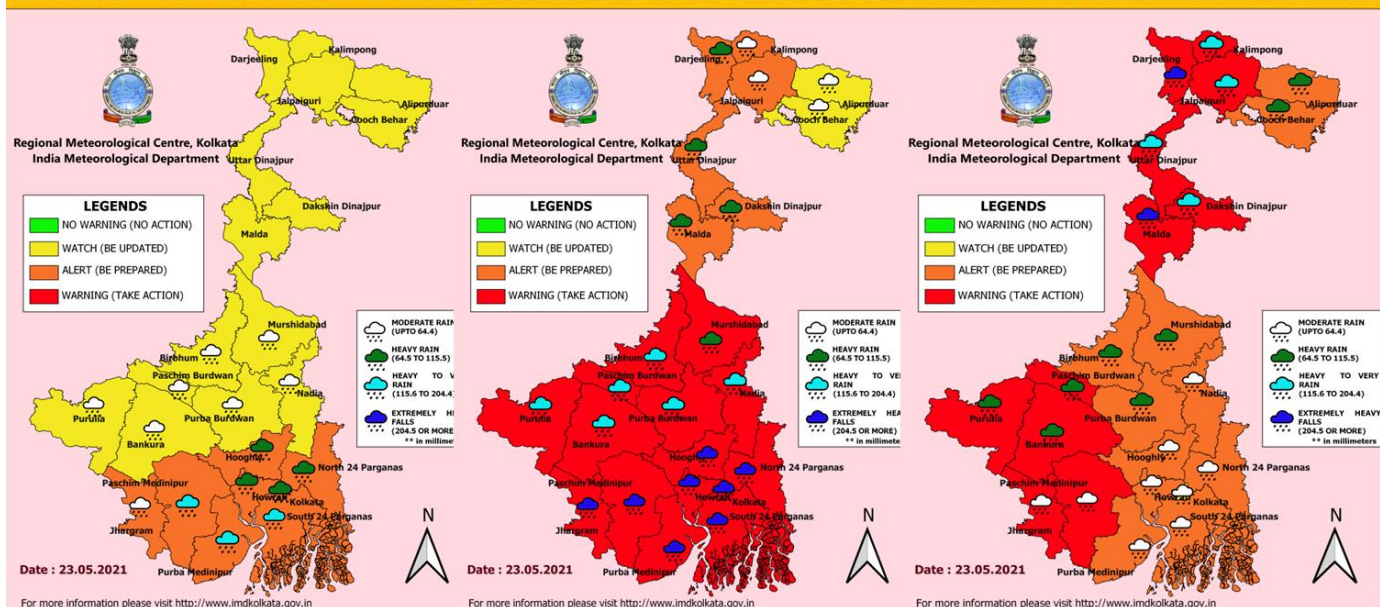
■ ≥ 64 KT (≥ 118 KMPH)

## IMPACT OVER THE SEA

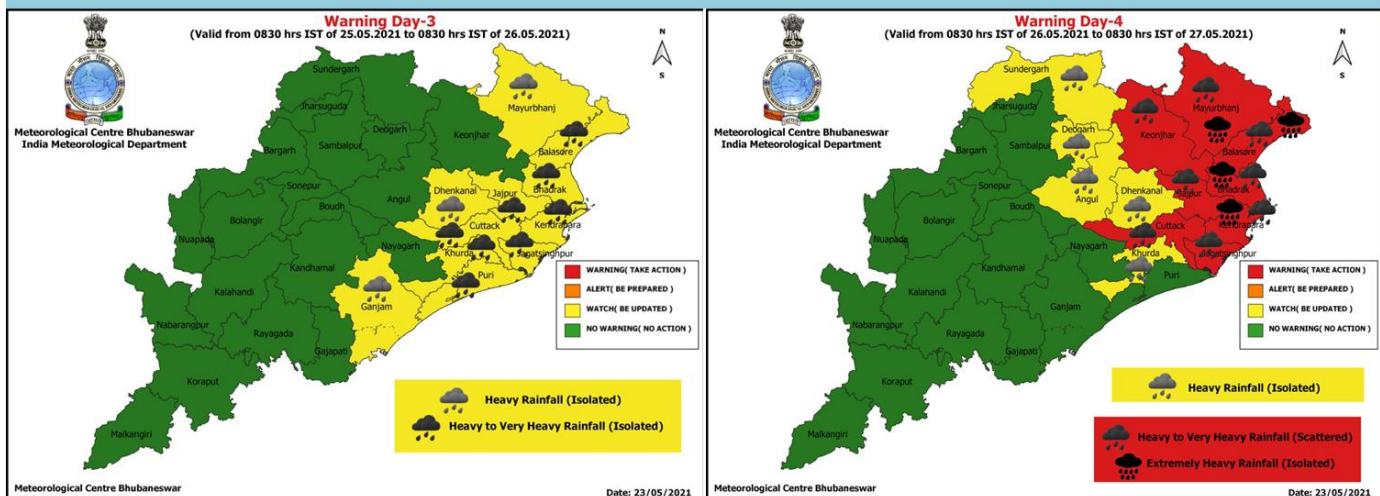
| MSW (knot/kmph) | Impact                 | Action                                 |
|-----------------|------------------------|----------------------------------------|
| 28-33 (52-61)   | Very rough seas        | Total suspension of fishing operations |
| 34-49 (62-91)   | High to very high seas | Total suspension of fishing operations |
| 50-63 (92-117)  | Very high seas         | Total suspension of fishing operations |
| ≥ 64 (≥ 118)    | Phenomenal             | Total suspension of fishing operations |

# Rainfall warning for West Bengal & Sikkim

HEAVY RAINFALL WARNING FOR WEST BENGAL DATED-25.05.21 HEAVY RAINFALL WARNING FOR WEST BENGAL DATED-26.05.21 HEAVY RAINFALL WARNING FOR WEST BENGAL DATED-27.05.21



## Rainfall forecast Odisha



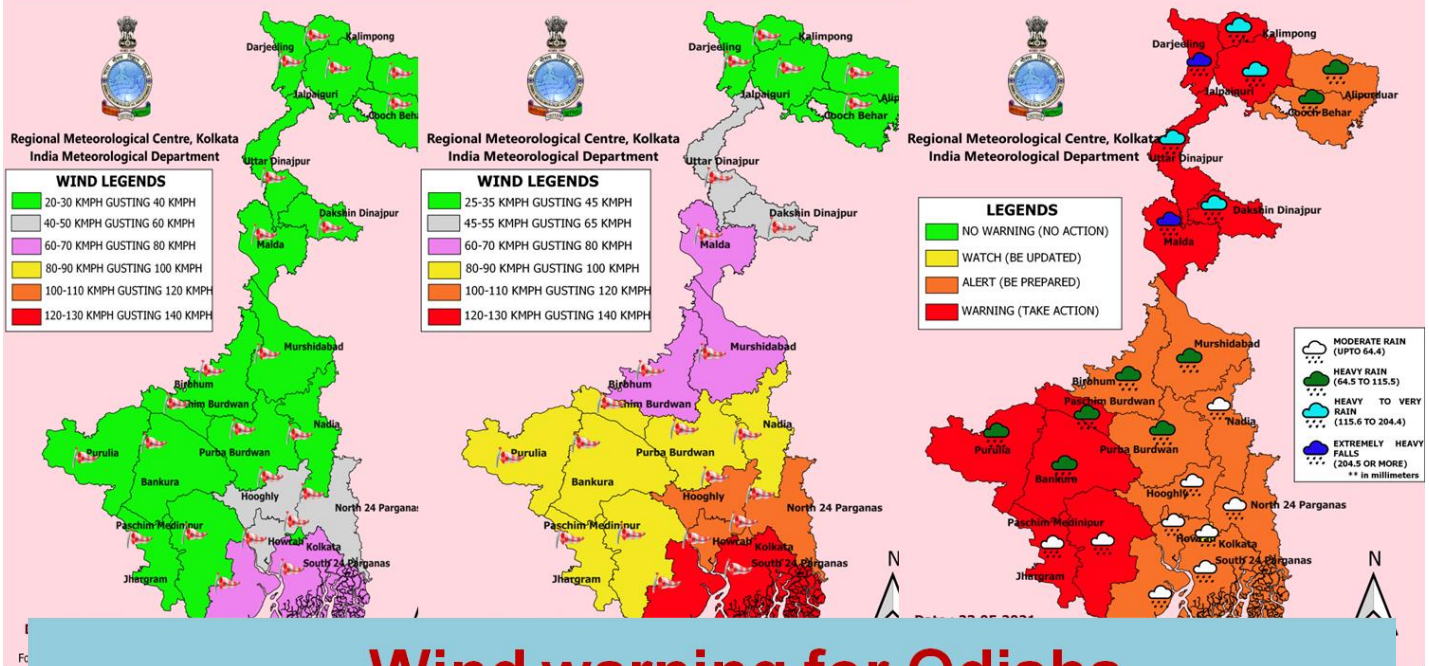


# Wind warning for West Bengal & Sikkim

WIND WARNING FOR WEST BENGAL, DATED-25.05.2021

WIND WARNING FOR WEST BENGAL, DATED-26.05.2021

HEAVY RAINFALL WARNING FOR WEST BENGAL, DATED-27.05.2021



# Wind warning for Odisha

