



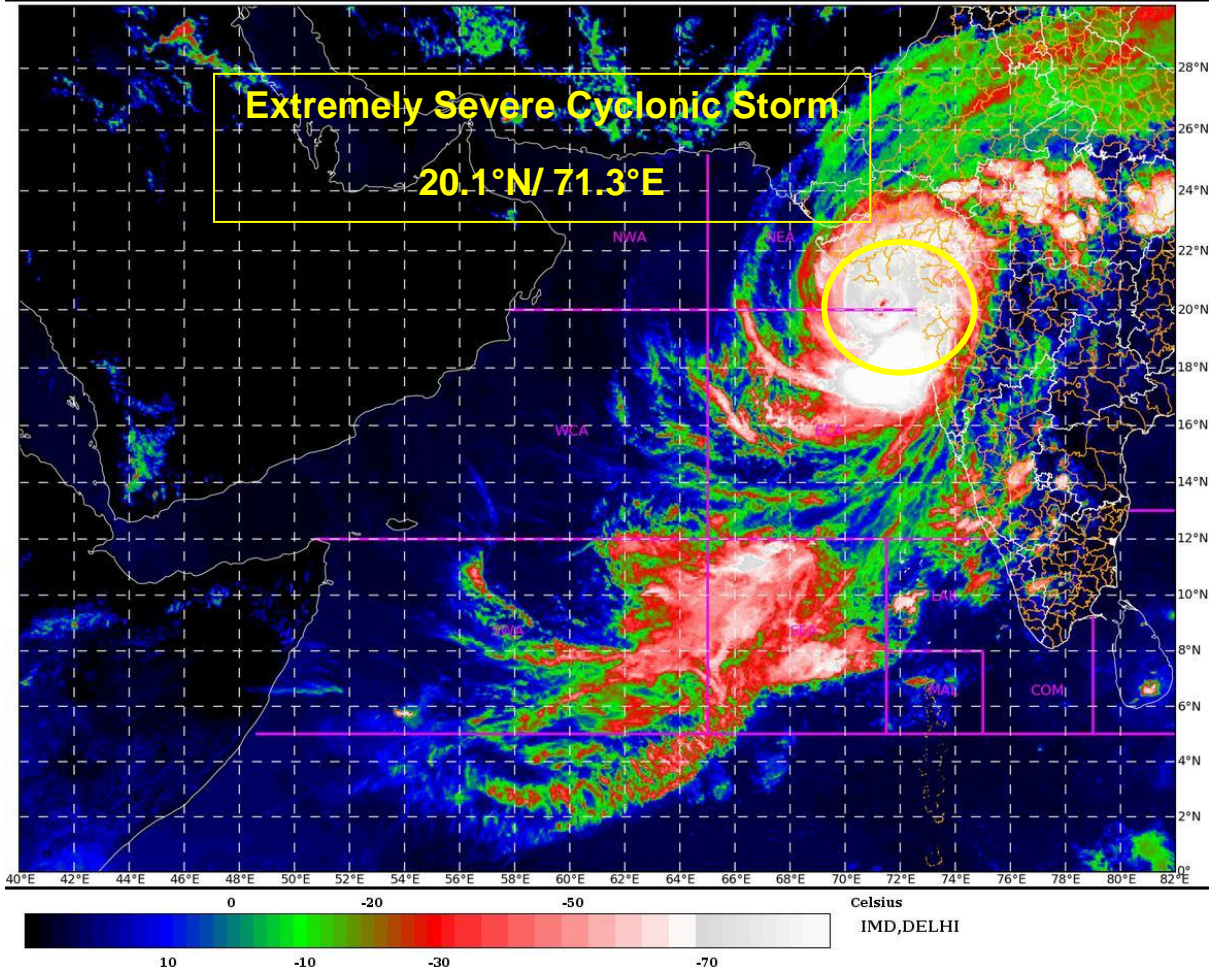
India Meteorological Department (Ministry of Earth Sciences)

DATE: 17-05-2021

TIME OF ISSUE: 1850 HRS IST

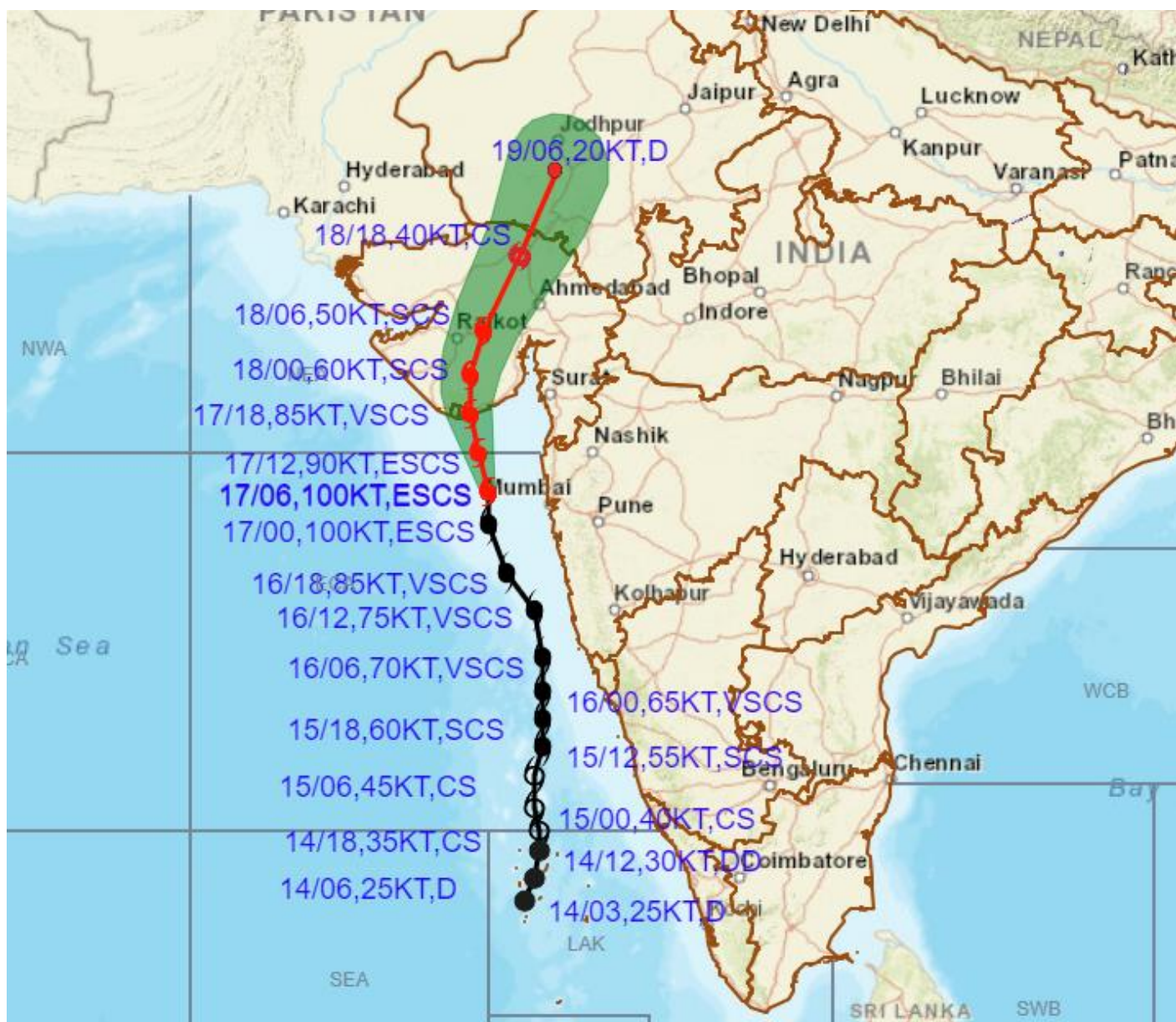
SAT : INSAT-3D IMG
IMG_TIR1_TEMP 10.8 um
ARABIAN_SEA

17-05-2021/(1130 to 1156) GMT
17-05-2021/(1700 to 1726) IST





OBSERVED AND FORECAST TRACK ALONGWITH CONE OF UNCERTAINTY OF EXTREMELY SEVERE CYCLONIC STORM "TAUKTAE" OVER EASTCENTRAL ARABIAN SEA BASED ON 0600 UTC OF 17TH MAY, 2021

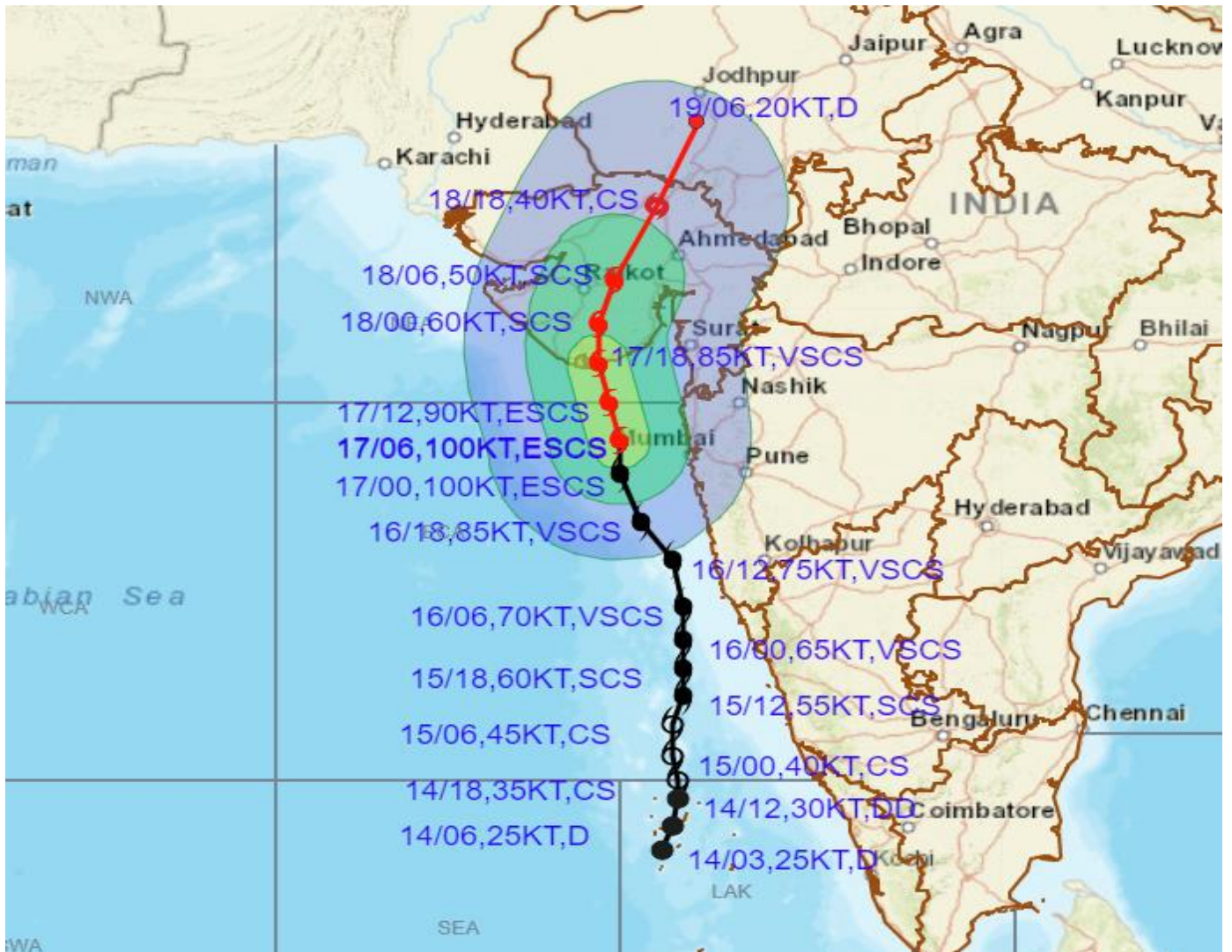


DATE/TIME IN UTC
 IST=UTC + 0530
 L: LOW PRESSURE AREA
 WML: WELL MARKED LOW PRESSURE AREA
 D: DEPRESSION (17-27 KT)
 DD: DEEP DEPRESSION (28-33 KT)
 CS: CYCLONIC STORM (34-47 KT)
 SCS: SEVERE CYCLONIC STORM (48-63KT)
 VSCS: VERY SEVERE CYCLONIC STORM (64-89 KT)
 ESCS: EXTREMELY SEVERE CYCLONIC STORM (90-119 KT)
 SuCS: SUPER CYCLONIC STORM (\geq 120 KT)

- LESS THAN 34 KT
- 34-47 KT
- \geq 48 KT
- OBSERVED TRACK
- FORECAST TRACK
- CONE OF UNCERTAINTY



OBSERVED AND FORECAST TRACK ALONGWITH CONE OF UNCERTAINTY OF EXTREMELY SEVERE CYCLONIC STORM "TAUKTAE" OVER EASTCENTRAL ARABIAN SEA BASED ON 0600 UTC OF 17TH MAY, 2021



DATE/TIME IN UTC

IST=UTC + 0530

L: LOW PRESSURE AREA

WML: WELL MARKED LOW PRESSURE AREA

D: DEPRESSION (17-27 KT)

DD: DEEP DEPRESSION (28-33 KT)

CS: CYCLONIC STORM (34-47 KT)

SCS: SEVERE CYCLONIC STORM (48-63KT)

VSCS: VERY SEVERE CYCLONIC STORM (64-89 KT)

ESCS: EXTREMELY SEVERE CYCLONIC STORM (90-119 KT)

SuCS: SUPER CYCLONIC STORM (≥ 120 KT)

● LESS THAN 34 KT

○ 34-47 KT

◐ ≥ 48 KT

— OBSERVED TRACK

— FORECAST TRACK

◊ CONE OF UNCERTAINTY

AREA OF MAXIMUM SUSTAINED WIND SPEED:

■ 28-33 KT (52-61 KMPH)

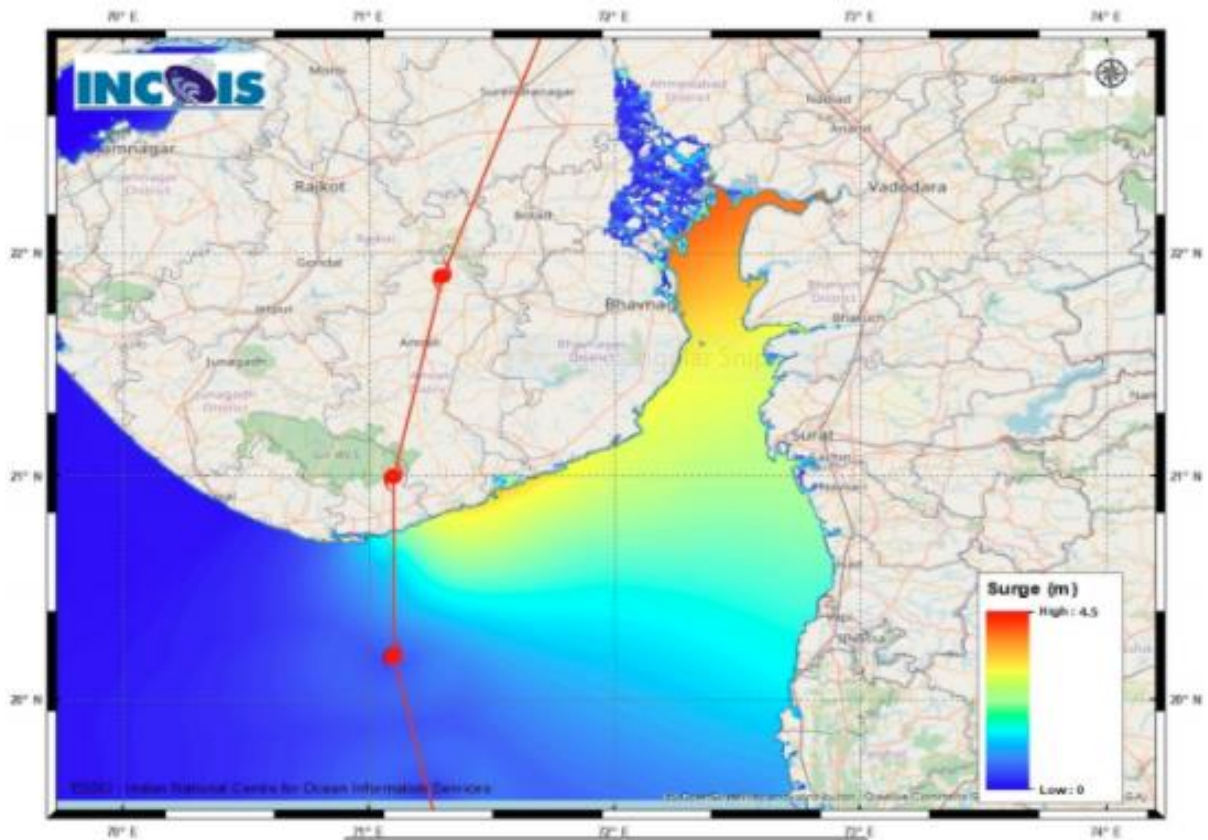
■ 34-49 KT (62-91 KMPH)

■ 50-63 KT (92-117 KMPH)

■ ≥ 64 KT (≥118 KMPH)


IMPACT OVER THE SEA

MSW (knot/kmph)	Impact	Action
28-33 (52-61)	Very rough seas	Total suspension of fishing operations
34-49 (62-91)	High to very high seas	Total suspension of fishing operations
50-63 (92-117)	Very high seas	Total suspension of fishing operations
≥ 64 (≥118)	Phenomenal	Total suspension of fishing operations



Page 2 Figure: Storm Surge Map +

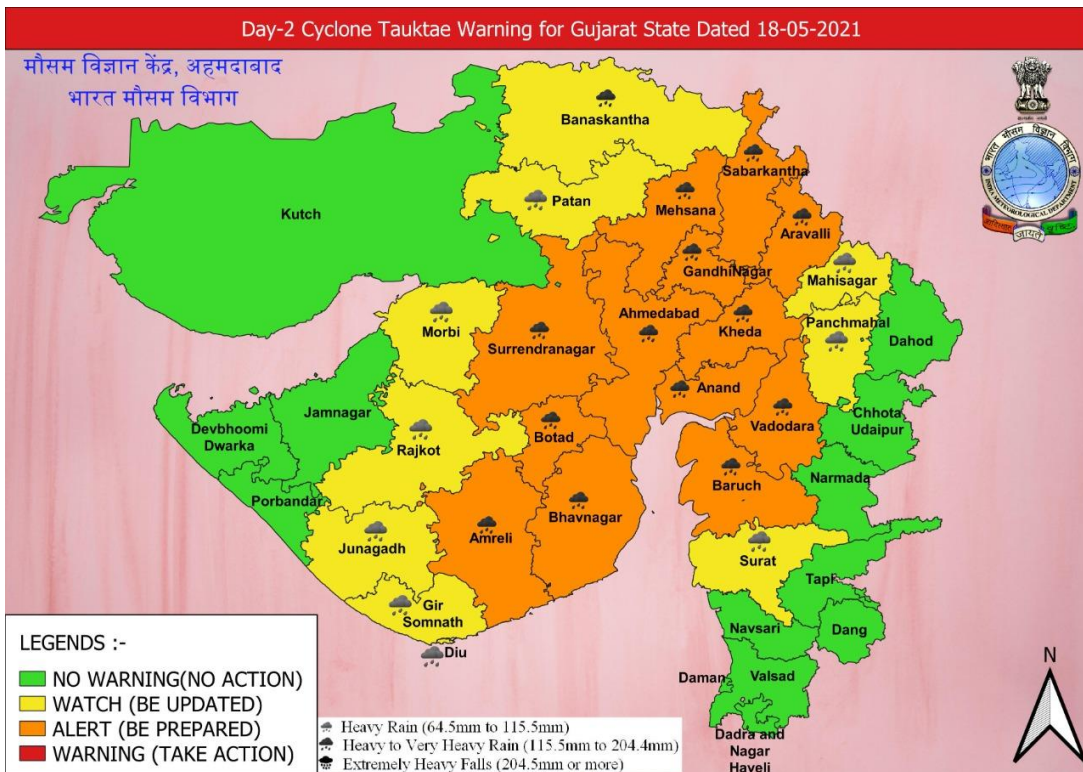
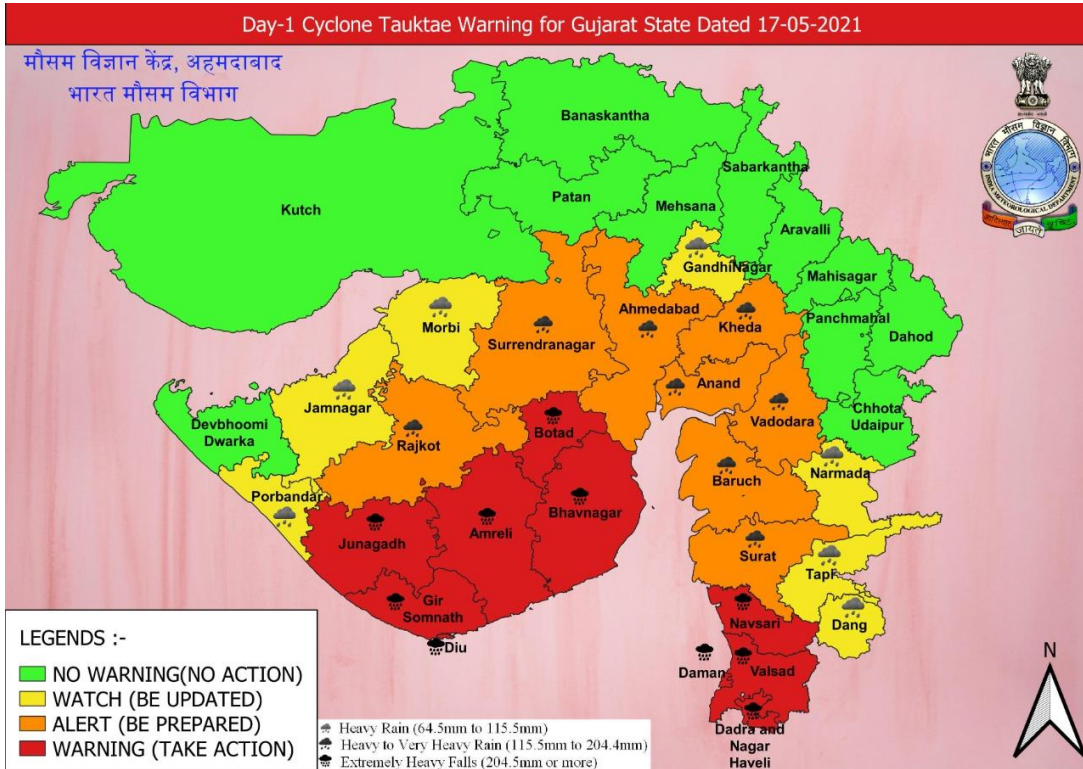
STORM SURGE GUIDANCE FROM INCOIS BASED ON 0530 HRS IST OBSERVATIONS

STORM SURGE HEIGHT INFORMATION:Open with 

* The below listed surge heights are over and above astronomical tide.

MANDAL/TALUK	DISTRICT	STATE / UNION TERRITORY	NEAREST PLACE OF HABITATION	STORM SURGE (m) *	EXPECTED INUNDATION EXTENT (km)
Khambhat	Anand	Gujarat	Mitli	3.0-4.5	Upto 9.15
Bhavnagar	Bhavnagar	Gujarat	Narbad	3.0-4.2	Upto 2.90
Rajula	Amreli	Gujarat	Patva	2.1-3.8	Upto 1.08
Mundra	Bhavnagar	Gujarat	Vadgam	3.5-3.7	Upto 1.36
Jafarabad	Amreli	Gujarat	Rohisa	1.9-3.5	Upto 0.23
Vagra	Bharuch	Gujarat	Harinagar	1.8-3.4	Upto 0.88
Mahuva	Bhavnagar	Gujarat	Gadhada	1.6-3.3	Upto 0.31
Talaja	Bhavnagar	Gujarat	Talaja	1.6-3.2	Upto 0.39
Bharuch	Bharuch	Gujarat	Kasva	1.9-3	Upto 0.19
Hansot Mahal	Bharuch	Gujarat	Kantiyajal	1.7-3	Upto 4.41
Olpad	Surat	Gujarat	Vansva	2.1-2.7	Upto 1.16
Una	Junagadh	Gujarat	Una	0.8-2.7	Upto 0.56
Hazira	Surat	Gujarat	Hajira Ina (ina)	1.8-2.6	Upto 1.33
Chorasi	Surat	Gujarat	Bhimpur	0.8-2.5	Upto 2.31
Navsari	Navsari	Gujarat	Borsi	1.5-2.4	Upto 0.64
Gandevi	Navsari	Gujarat	Mendhar	1.9-2.1	Upto 1.26
Valsad	Valsad	Gujarat	Malvan	1.6-2.1	Upto 0.51
Daman	Daman	Daman and Diu	Daman	1.4-1.8	Upto 0.12
Umargam	Valsad	Gujarat	Umargam	1.6-1.7	Upto 0.21
Dahanu	Palghar	Maharashtra	Narpad	0.7-1.5	Upto 1.05
Palghar	Palghar	Maharashtra	Akkarpatti	0.5-1.2	Upto 0.75
Diu	Diu	Daman and Diu	Diu	0.9-1.1	Upto 0.32
Vasai	Palghar	Maharashtra	Jalsar	0.6-1.1	Upto 1.13
Wada	Thane	Maharashtra	Juchandra	1.1-1.1	Upto 0.21
Borsad	Anand	Gujarat	Tithor	1.4-1.5	Upto 0.52
Alibag	Raigarh	Maharashtra	Ranjankhar Davali	0.3-0.9	Upto 1.90
Bombay	Mumbai City	Maharashtra	Greater Bombay	0.7-0.9	Nil
Kodinar	Gir Somnath	Gujarat	Chhara	0.4-0.8	Upto 0.32
Panvel	Raigarh	Maharashtra	Gavhan	0.7-0.8	Upto 0.72
Uran	Raigarh	Maharashtra	Jasai	0.7-0.8	Upto 2.40
Murud	Raigarh	Maharashtra	Borli	0.5-0.7	Upto 0.21
Dapoli	Ratnagiri	Maharashtra	Tadachakond	0.4-0.5	Upto 0.11
Mandangarh	Ratnagiri	Maharashtra	Danda	0.4-0.5	Nil

HEAVY RAINFALL WARNING FOR GUJARAT STATE FOR 17TH AND 18TH MAY



WIND WARNING FOR GUJARAT STATE FROM 17TH NIGHT TO 18TH MAY

