



सत्यमेव जयते
Government of India
Ministry of Earth Sciences

Time of issue: 1300 hours IST

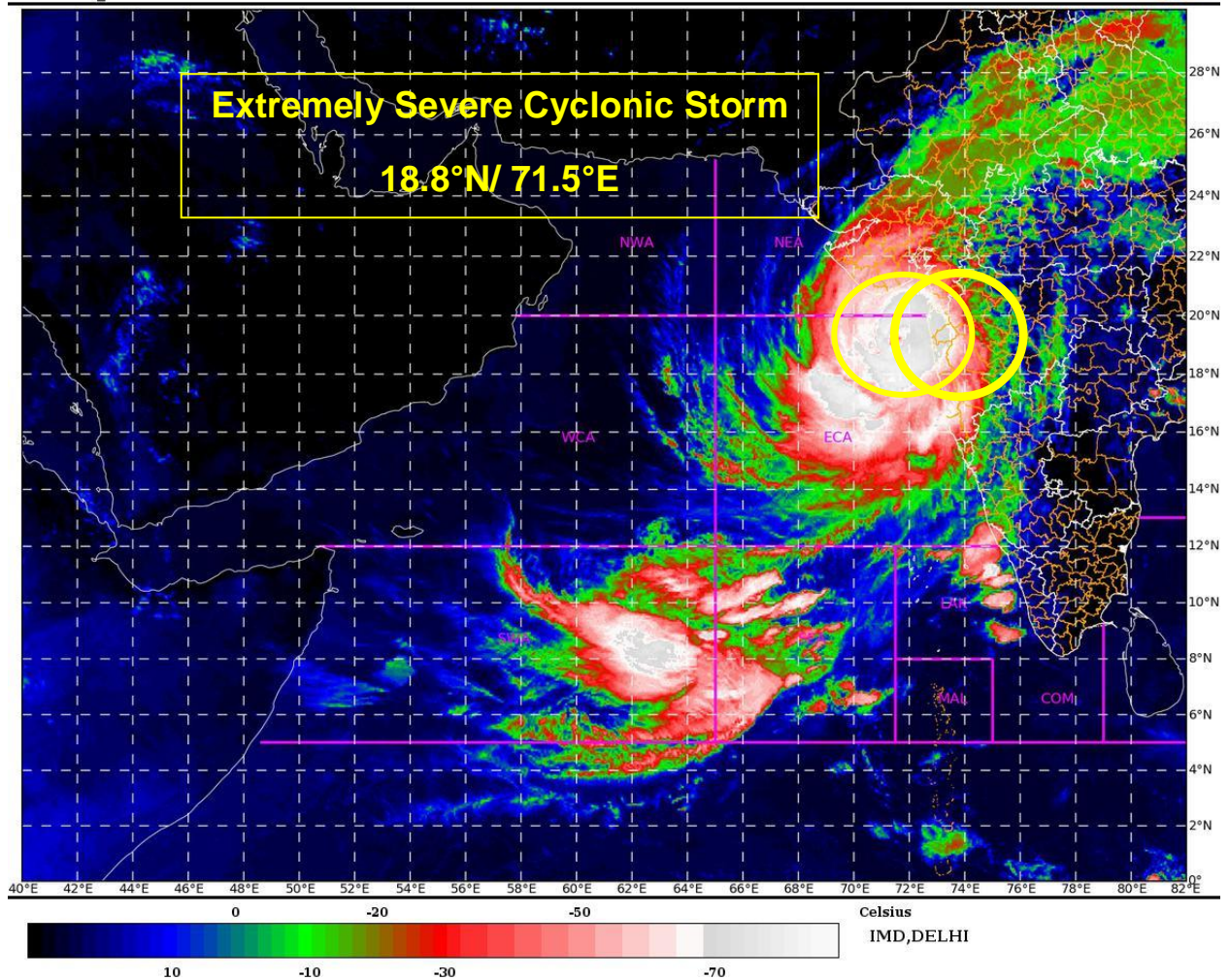


India Meteorological Department

Dated: 17-05-2021

SAT : INSAT-3D IMG
IMG_TIR1_TEMP 10.8 um
ARABIAN SEA

17-05-2021/(0430 to 0456) GMT
17-05-2021/(1000 to 1026) IST

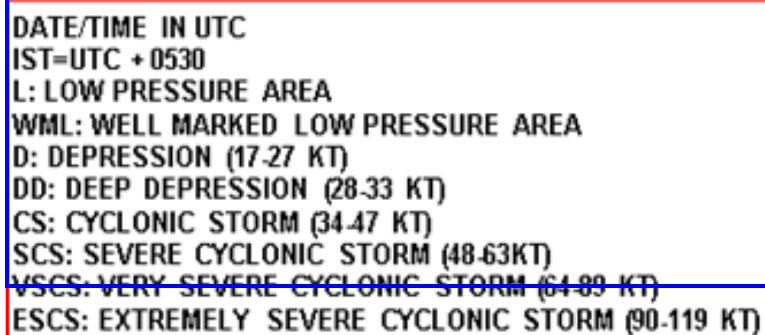
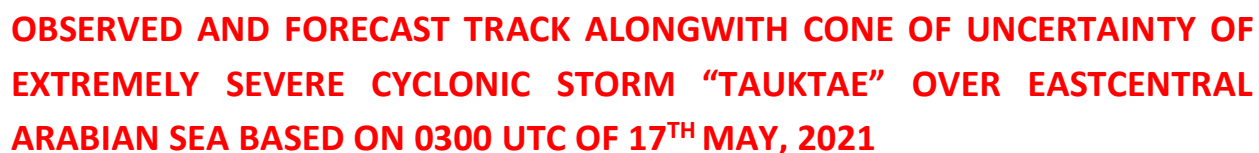








Contact: Cyclone Warning Division, Office of the Director General of Meteorology,
India Meteorological Department, Ministry of Earth Sciences.

Phone: (91) 11-24652484, FAX: (91) 11-24643128, 24623220, E-mail: cwdhq2008@gmail.com, Website: rsmcnewdelhi.imd.gov.in

Spatial rainfall distribution: Isolated: <25%, A few: 26-50%, Many: 51-75%, Most: 76-100%

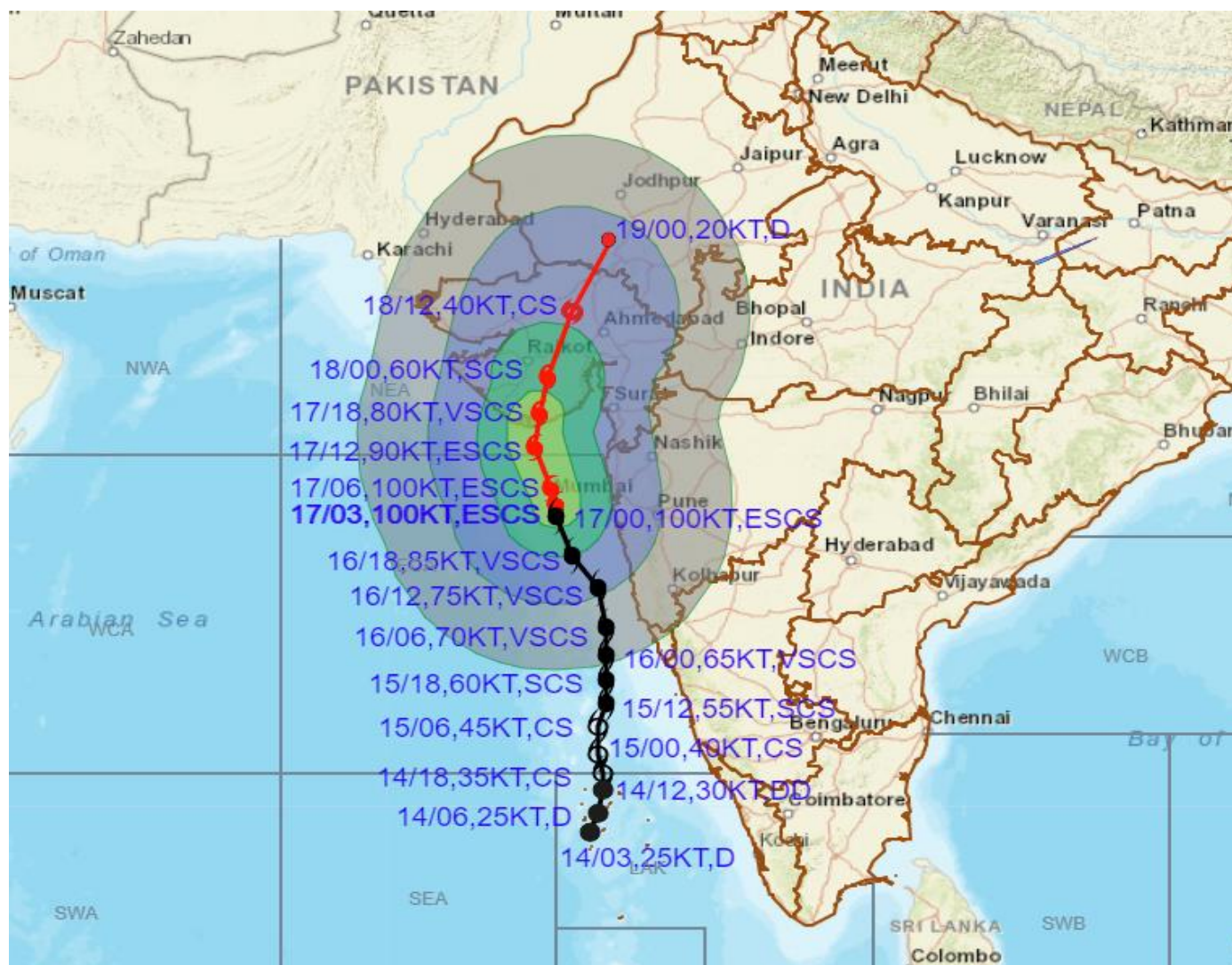
Rainfall amount (mm): Heavy rain: 64.5 – 115.5, Very heavy rain: 115.6 – 204.4, Extremely heavy rain: 204.5 or more.



-  LESS THAN 34 KT
 34-47 KT
 ≥ 48 KT
 OBSERVED TRACK
 FORECAST TRACK
 CONE OF UNCERTAINTY



OBSERVED AND FORECAST TRACK ALONGWITH CONE OF UNCERTAINTY OF EXTREMELY SEVERE CYCLONIC STORM "TAUKTAE" OVER EASTCENTRAL ARABIAN SEA BASED ON 0300 UTC OF 17TH MAY, 2021



DATE/TIME IN UTC

IST=UTC + 0530

L: LOW PRESSURE AREA

WML: WELL MARKED LOW PRESSURE AREA

D: DEPRESSION (17-27 KT)

DD: DEEP DEPRESSION (28-33 KT)

CS: CYCLONIC STORM (34-47 KT)

SCS: SEVERE CYCLONIC STORM (48-63KT)

VSCS: VERY SEVERE CYCLONIC STORM (64-89 KT)

ESCS: EXTREMELY SEVERE CYCLONIC STORM (90-119 KT)

SuCS: SUPER CYCLONIC STORM (≥ 120 KT)

● LESS THAN 34 KT

○ 34-47 KT

● ≥ 48 KT

— OBSERVED TRACK

— FORECAST TRACK

— CONE OF UNCERTAINTY

AREA OF MAXIMUM SUSTAINED WIND SPEED:

— 28-33 KT (52-61 KMPH)

— 34-49 KT (62-91 KMPH)

— 50-63 KT (92-117 KMPH)

— ≥ 64 KT (≥ 118 KMPH)

IMPACT OVER THE SEA

MSW (knot/kmph)	Impact	Action
28-33 (52-61)	Very rough seas	Total suspension of fishing operations
34-49 (62-91)	High to very high seas	Total suspension of fishing operations
50-63 (92-117)	Very high seas	Total suspension of fishing operations
≥ 64 (≥ 118)	Phenomenal	Total suspension of fishing operations

ANNEXURE-1

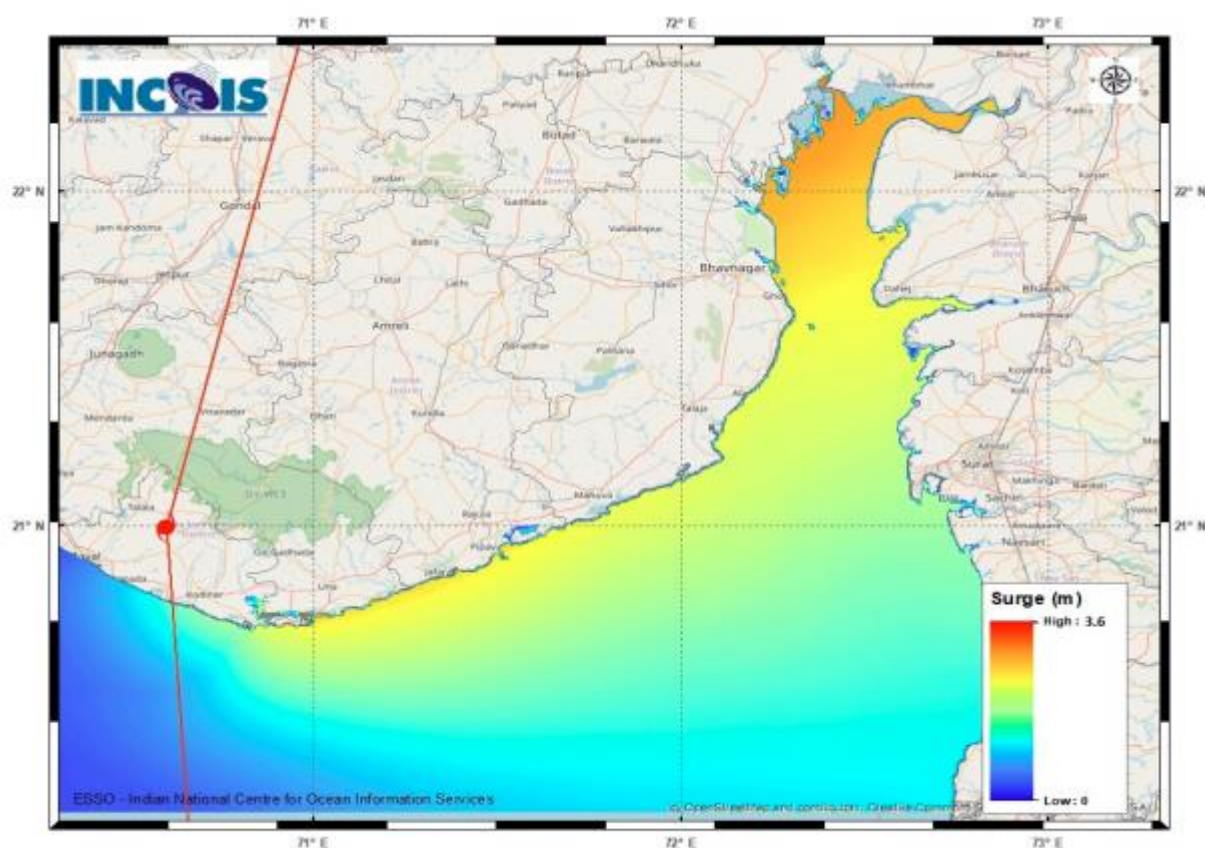


Figure: Storm Surge Map

Contact: Cyclone Warning Division, Office of the Director General of Meteorology,
India Meteorological Department, Ministry of Earth Sciences.

Phone: (91) 11-24652484, FAX: (91) 11-24643128, 24623220, E-mail: cwdhq2008@gmail.com, Website: rsmcnewdelhi.imd.gov.in

Spatial rainfall distribution: Isolated: <25%, A few: 26-50%, Many: 51-75%, Most: 76-100%

Rainfall amount (mm): Heavy rain: 64.5 – 115.5, Very heavy rain: 115.6 – 204.4, Extremely heavy rain: 204.5 or more.

STORM SURGE HEIGHT INFORMATION:

* The below listed surge heights are over and above astronomical tide.

MANDAL/TALUK	DISTRICT	STATE / UNION TERRITORY	NEAREST PLACE OF HABITATION	STORM SURGE (m) *	EXPECTED INUNDATION EXTENT (km)
Una	Junagadh	Gujarat	Una	1.2-3.6	Upto 0.9
Dhandbuka	Ahmadabad	Gujarat	Mitli	0.8-3.3	Upto 4.3
Hansot Mahal	Bharuch	Gujarat	Kantiyajal	1.0-2.3	Upto 3.3
Jafarabad	Amreli	Gujarat	Rohisa	2.5-2.6	Upto 0.1
Hazira	Surat	Gujarat	Hajira Ina (ina)	1.2-2.0	Upto 1.0
Kodinar	Gir Somnath	Gujarat	Kodinar	1.5-3.0	Upto 0.5
Mundra	Bhavnagar	Gujarat	Vadgam	2.4-2.4	Upto 0.9
Diu	Diu	Daman and Diu	Diu	1.6-2.9	Upto 0.7
Mahuva	Bhavnagar	Gujarat	Katpar (ct)	1.4-2.4	Upto 0.2
Bharuch	Bharuch	Gujarat	Kasva	1.3-2.3	Upto 0.1
Bhavnagar	Bhavnagar	Gujarat	Narbad	1.1-2.9	Upto 2.4
Borsad	Anand	Gujarat	Tithor	1.9-2.7	Upto 0.3
Chorasi	Surat	Gujarat	Bhimpor	1.4-1.8	Upto 1.0
Vagra	Bharuch	Gujarat	Harinagar	1.7-2.5	Upto 0.5
Valsad	Valsad	Gujarat	Malvan	1.1-1.5	Upto 0.3
Gandevi	Navsari	Gujarat	Mendhar	0.8-1.6	Upto 1.2
Dahanu	Palghar	Maharashtra	Narpad	0.5-1.2	Upto 1.0
Daman	Daman	Daman and Diu	Daman	0.9-1.3	Nil
Navsari	Navsari	Gujarat	Borsi	0.9-1.8	Upto 0.4
Olpad	Surat	Gujarat	Vansva	1.5-2.1	Upto 0.6
Veraval	Gir Somnath	Gujarat	Mul Dwarka	0.5-1.8	Upto 0.2
Palghar	Palghar	Maharashtra	Akkarpatti	0.4-1.0	Upto 0.5
Panvel	Raigarh	Maharashtra	Gavhan	0.7-0.7	Upto 0.5
Rajula	Amreli	Gujarat	Patva	1.1-2.7	Upto 0.3
Talaja	Bhavnagar	Gujarat	Talaja	1.6-2.3	Upto 0.2
Umargam	Valsad	Gujarat	Umargam	1.2-1.3	Upto 0.2
Uran	Raigarh	Maharashtra	Sheva	0.6-0.7	Upto 2.2
Vasai	Palghar	Maharashtra	Jalsar	0.8-0.9	Upto 1.1
Wada	Thane	Maharashtra	Juchandra	0.8-0.8	Upto 0.2
Bombay	Mumbai City	Maharashtra	Greater Bombay	0.6-0.7	Nil
Alibag	Raigarh	Maharashtra	Ranjankhar Divali	0.5-0.7	Upto 1.9
Maliya	Junagadh	Gujarat	Vadodra Dodiya	0.3-0.3	Upto 0.1
Mangaon	Raigarh	Maharashtra	Water Body	0.5-0.5	Upto 0.1

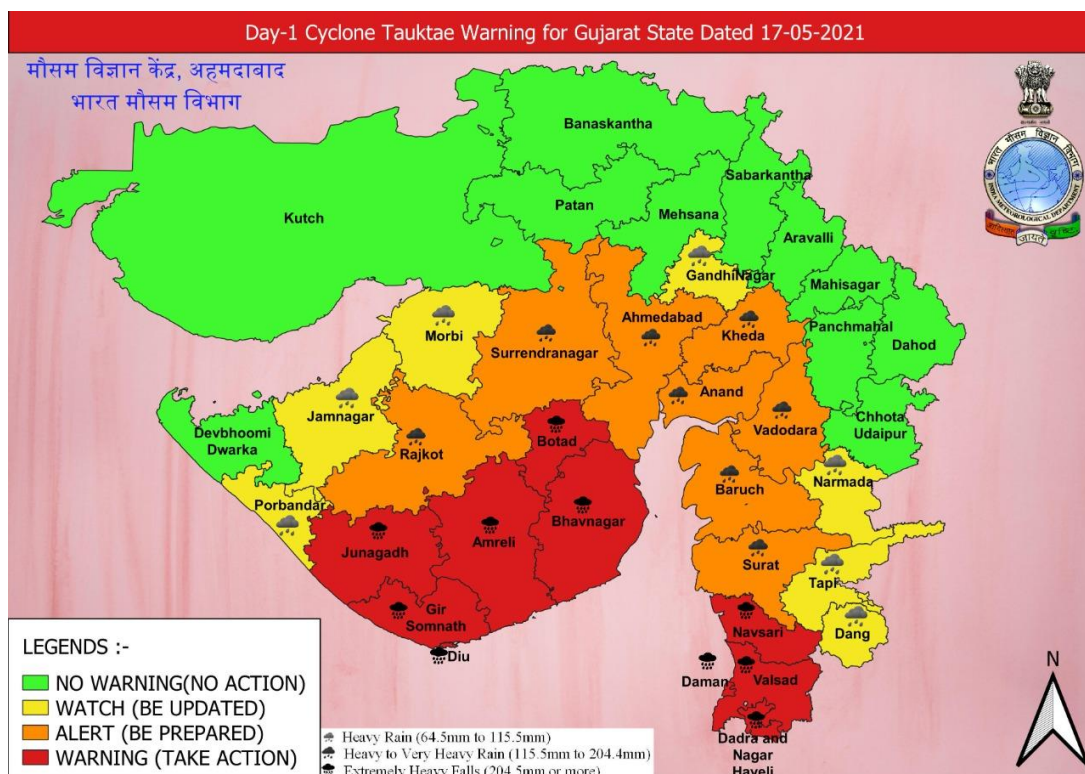
Contact: Cyclone Warning Division, Office of the Director General of Meteorology,
India Meteorological Department, Ministry of Earth Sciences.

Phone: (91) 11-24652484, FAX: (91) 11-24643128, 24623220, E-mail: cwdhq2008@gmail.com, Website: rsmcnewdelhi.imd.gov.in

Spatial rainfall distribution: Isolated: <25%, A few: 26-50%, Many: 51-75%, Most: 76-100%

Rainfall amount (mm): Heavy rain: 64.5 – 115.5, Very heavy rain: 115.6 – 204.4, Extremely heavy rain: 204.5 or more.

Heavy rainfall Warning for Gujarat State for 17th and 18th May

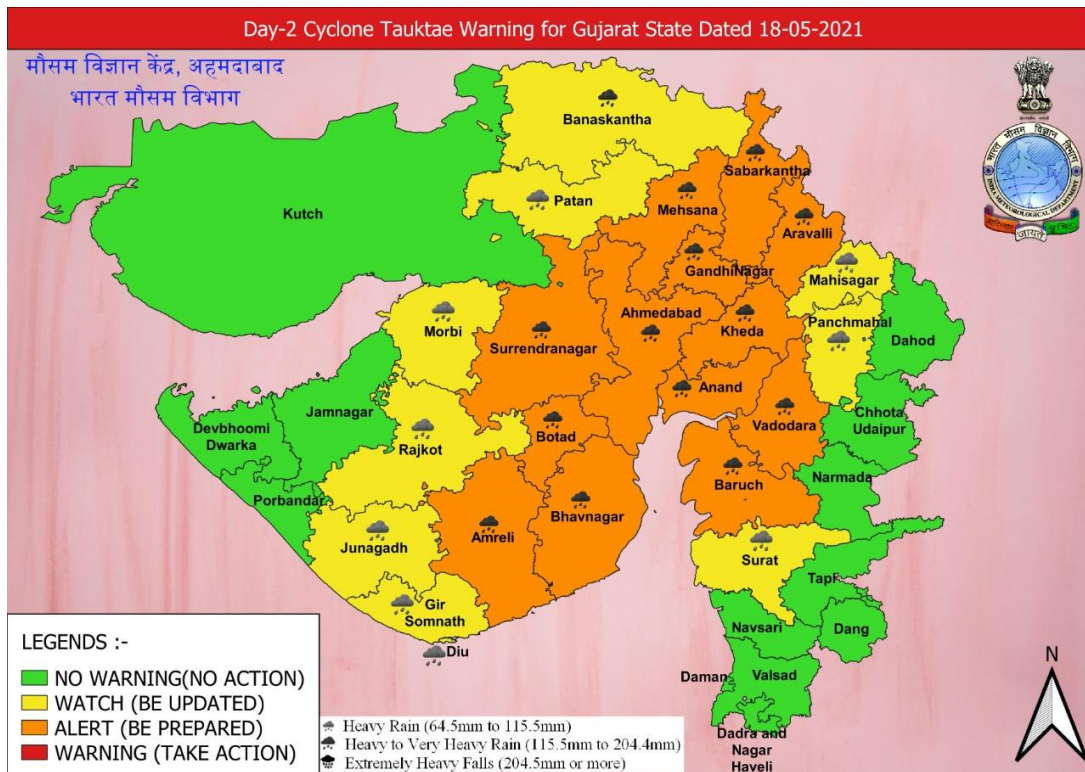


Contact: Cyclone Warning Division, Office of the Director General of Meteorology,
India Meteorological Department, Ministry of Earth Sciences.

Phone: (91) 11-24652484, FAX: (91) 11-24643128, 24623220, E-mail: cwdhq2008@gmail.com, Website: rsmcnewdelhi.imd.gov.in

Spatial rainfall distribution: Isolated: <25%, A few: 26-50%, Many: 51-75%, Most: 76-100%

Rainfall amount (mm): Heavy rain: 64.5 – 115.5, Very heavy rain: 115.6 – 204.4, Extremely heavy rain: 204.5 or more.



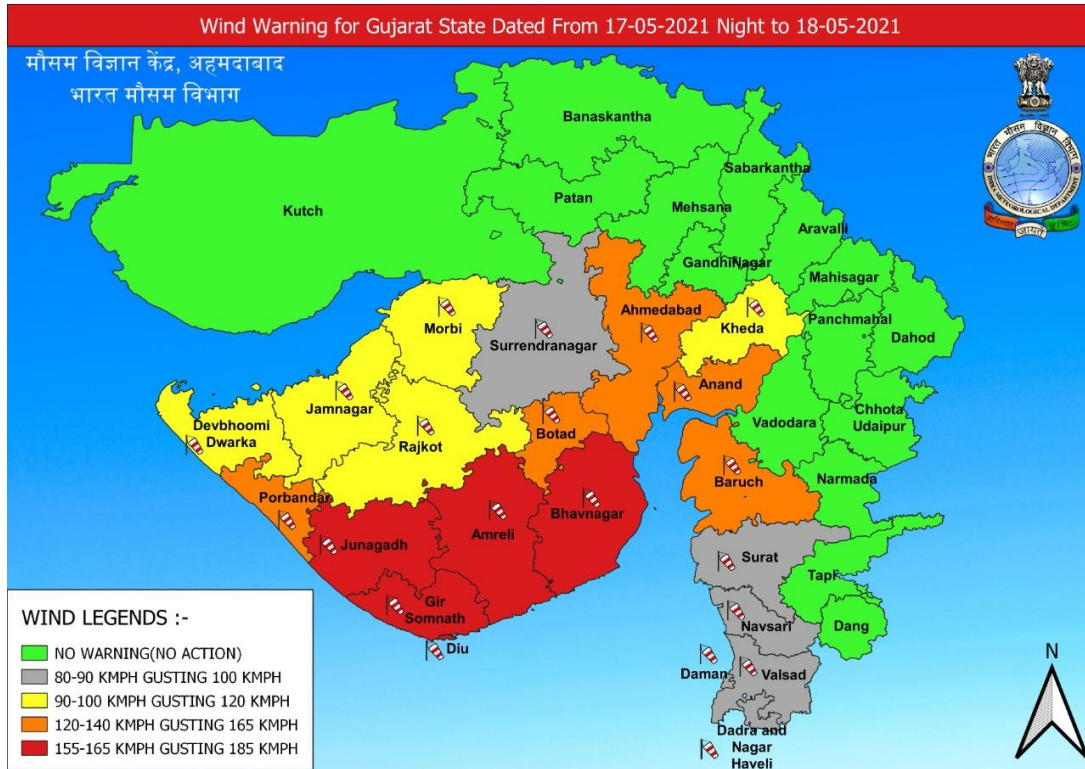
Wind Warning for Gujarat State from 17th night to 18th May

Contact: Cyclone Warning Division, Office of the Director General of Meteorology,
India Meteorological Department, Ministry of Earth Sciences.

Phone: (91) 11-24652484, FAX: (91) 11-24643128, 24623220, E-mail: cwdhq2008@gmail.com, Website: rsmcnewdelhi.imd.gov.in

Spatial rainfall distribution: Isolated: <25%, A few: 26-50%, Many: 51-75%, Most: 76-100%

Rainfall amount (mm): Heavy rain: 64.5 – 115.5, Very heavy rain: 115.6 – 204.4, Extremely heavy rain: 204.5 or more.



Contact: Cyclone Warning Division, Office of the Director General of Meteorology,
India Meteorological Department, Ministry of Earth Sciences.

Phone: (91) 11-24652484, FAX: (91) 11-24643128, 24623220, E-mail: cwdhq2008@gmail.com, Website: rsmcnewdelhi.imd.gov.in

Spatial rainfall distribution: Isolated: <25%, A few: 26-50%, Many: 51-75%, Most: 76-100%

Rainfall amount (mm): Heavy rain: 64.5 – 115.5, Very heavy rain: 115.6 – 204.4, Extremely heavy rain: 204.5 or more.