



India Meteorological Department
(Ministry of Earth Sciences)

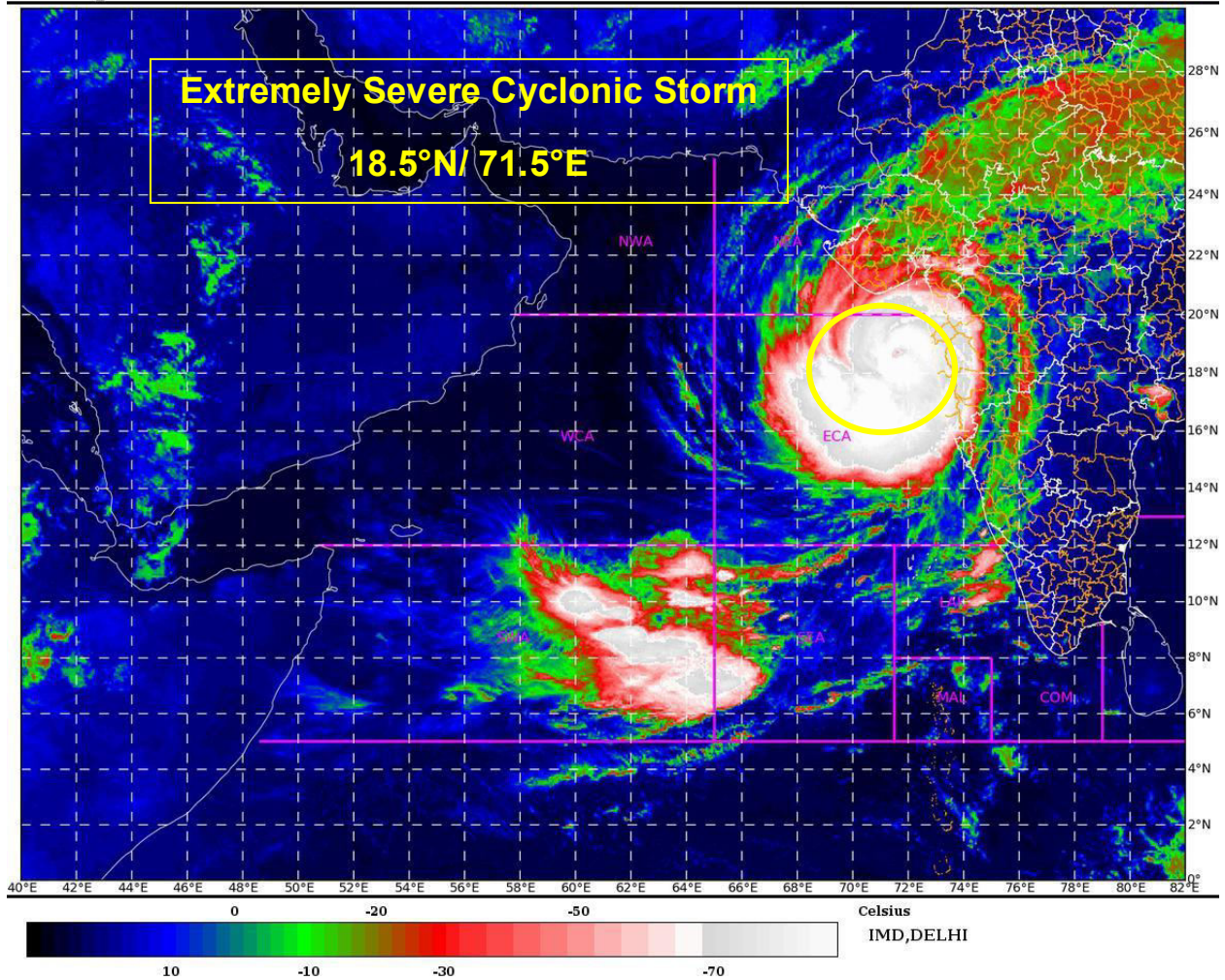
BULLETIN NO. 23: (ARB/01/2021)

TIME OF ISSUE: 0815 HOURS IST

DATED: 17.05.2021

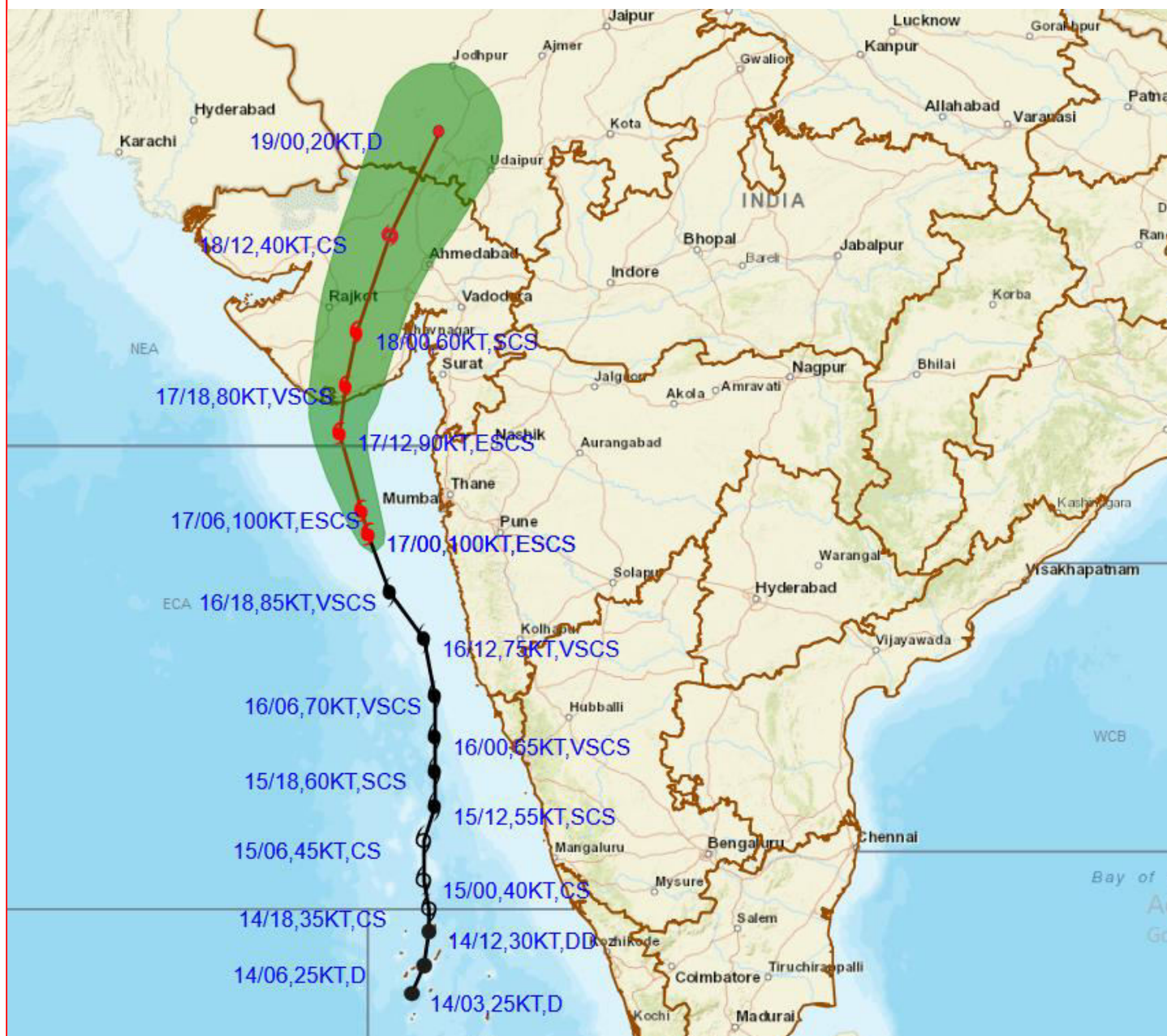
SAT : INSAT-3D IMG
IMG_TIR1_TEMP 10.8 μm
ARABIAN SEA

17-05-2021/(0030 to 0056) GMT
17-05-2021/(0600 to 0626) IST





**OBSERVED AND FORECAST TRACK ALONGWITH CONE OF UNCERTAINTY OF
EXTREMELY SEVERE CYCLONIC STORM “TAUKTAE” OVER EASTCENTRAL
ARABIAN SEA BASED ON 0000 UTC OF 17TH MAY, 2021**



DATE/TIME IN UTC

IST=UTC + 0530

L: LOW PRESSURE AREA

WML: WELL MARKED LOW PRESSURE AREA

D: DEPRESSION (17-27 KT)

DD: DEEP DEPRESSION (28-33 KT)

CS: CYCLONIC STORM (34-47 KT)

SCS: SEVERE CYCLONIC STORM (48-63KT)

VSCS: VERY SEVERE CYCLONIC STORM (64-89 KT)

ESCS: EXTREMELY SEVERE CYCLONIC STORM (90-119 KT)

SuCS: SUPER CYCLONIC STORM (≥ 120 KT)

● LESS THAN 34 KT

○ 34-47 KT

● ≥ 48 KT

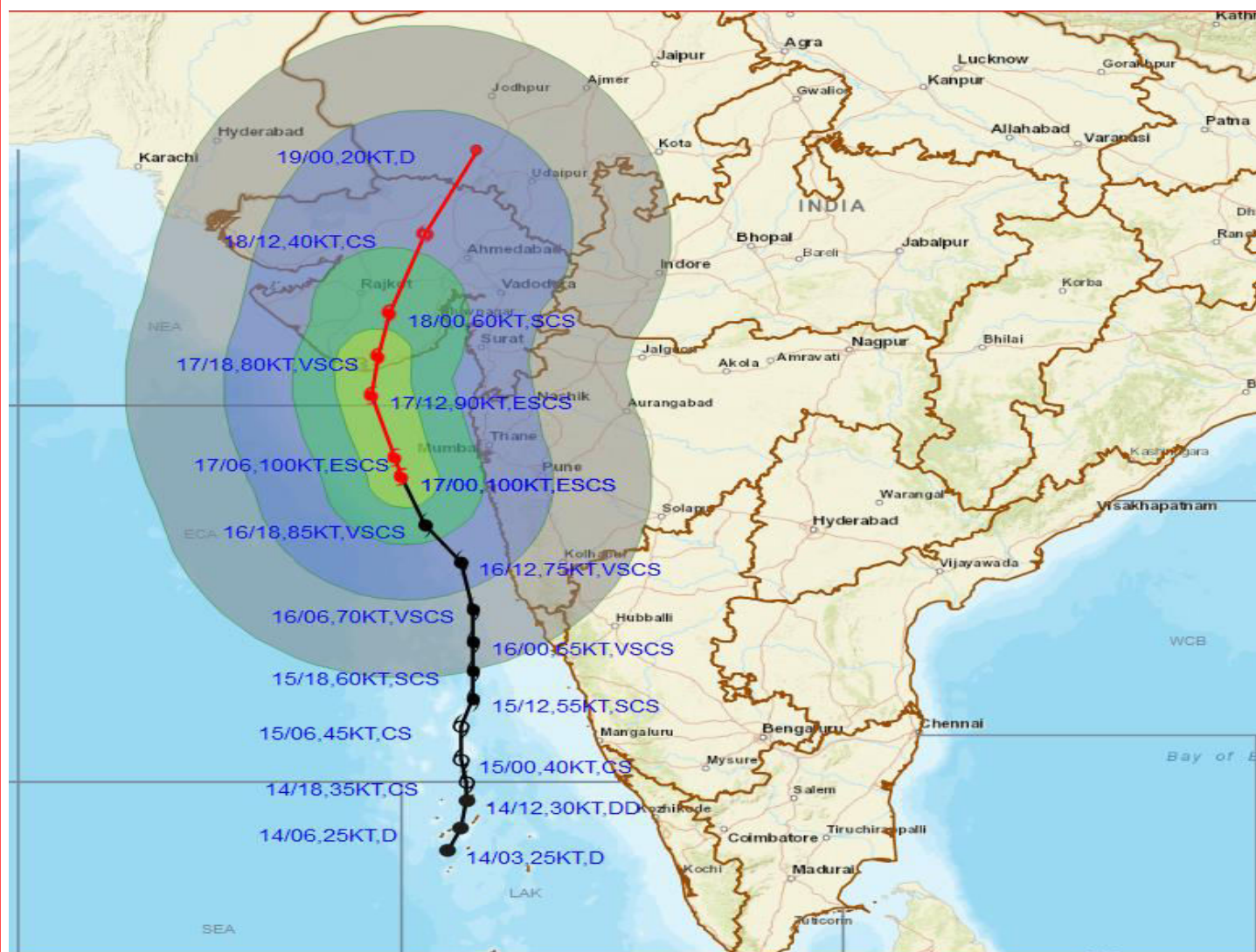
— OBSERVED TRACK

— FORECAST TRACK

▲ CONE OF UNCERTAINTY



OBSERVED AND FORECAST TRACK ALONGWITH CONE OF UNCERTAINTY OF EXTREMELY SEVERE CYCLONIC STORM “TAUKTAE” OVER EASTCENTRAL ARABIAN SEA BASED ON 0000 UTC OF 17TH MAY, 2021



DATE/TIME IN UTC

IST=UTC + 0530

L: LOW PRESSURE AREA

WML: WELL MARKED LOW PRESSURE AREA

D: DEPRESSION (17-27 KT)

DD: DEEP DEPRESSION (28-33 KT)

CS: CYCLONIC STORM (34-47 KT)

SCS: SEVERE CYCLONIC STORM (48-63 KT)

VSCS: VERY SEVERE CYCLONIC STORM (64-89 KT)

ESCS: EXTREMELY SEVERE CYCLONIC STORM (90-119 KT)

SuCS: SUPER CYCLONIC STORM (≥ 120 KT)

● LESS THAN 34 KT

○ 34-47 KT

● ≥ 48 KT

— OBSERVED TRACK

— FORECAST TRACK

▲ CONE OF UNCERTAINTY

AREA OF MAXIMUM SUSTAINED WIND SPEED:

— 28-33 KT (52-61 KMPH)

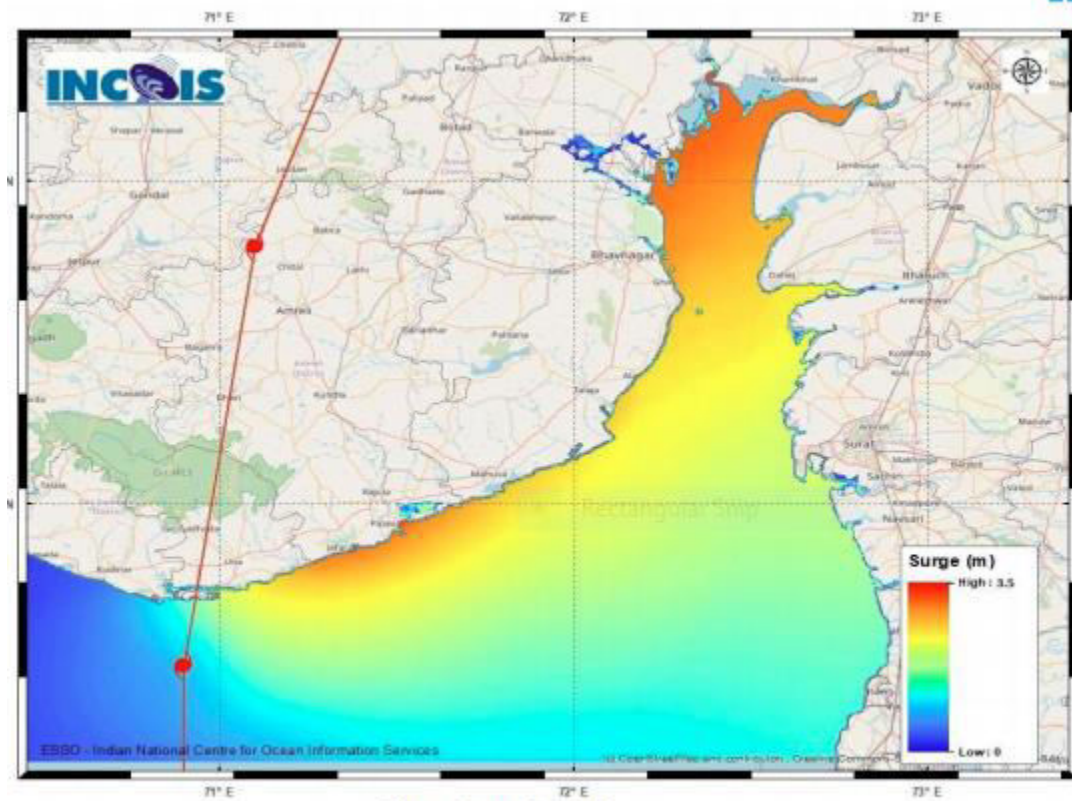
— 34-49 KT (62-91 KMPH)

— 50-63 KT (92-117 KMPH)

— ≥ 64 KT (≥ 118 KMPH)

IMPACT OVER THE SEA

MSW (knot/kmph)	Impact	Action
28-33 (52-61)	Very rough seas	Total suspension of fishing operations
34-49 (62-91)	High to very high seas	Total suspension of fishing operations
50-63 (92-117)	Very high seas	Total suspension of fishing operations
≥ 64 (≥ 118)	Phenomenal	Total suspension of fishing operations



STORM SURGE HEIGHT INFORMATION:

* The below listed surge heights are over and above astronomical tide.

MANDAL/TALUK	DISTRICT	STATE / UNION TERRITORY	NEAREST PLACE OF HABITATION	STORM SURGE (m) *	EXPECTED INUNDATION EXTENT (km)
Dhandhuka	Ahmadabad	Gujarat	Mitli	0.9-3.5	Upto 4.75
Rajula	Amreli	Gujarat	Patva	1.6-3.3	Upto 0.79
Bhavnagar	Bhavnagar	Gujarat	Narbad	0.3-3.2	Upto 2.44
Jafarabad	Amreli	Gujarat	Rohisa	1.8-3.1	Upto 0.23
Una	Junagadh	Gujarat	Una	0.8-3	Upto 0.91
Borsad	Anand	Gujarat	Tithor	2.1-2.9	Upto 0.35
Mahuva	Bhavnagar	Gujarat	Gadhada	1.6-2.9	Upto 0.27
Mundra	Bhavnagar	Gujarat	Vadgam	2.7-2.7	Upto 1.02
Talaja	Bhavnagar	Gujarat	Talaja	1.9-2.7	Upto 0.39
Vagra	Bharuch	Gujarat	Harinagar	1.9-2.7	Upto 0.59
Diu	Diu	Daman and Diu	Diu	1.2-2.5	Upto 0.70
Bharuch	Bharuch	Gujarat	Kasva	1.4-2.4	Upto 0.19
Hansot Mahal	Bharuch	Gujarat	Kantiyajal	1.1-2.4	Upto 3.39
Hazira	Surat	Gujarat	Hajira Ina (ina)	1.3-2.2	Upto 1.03
Olpad	Surat	Gujarat	Vansva	1.6-2.2	Upto 0.63
Navsari	Navsari	Gujarat	Borsi	1.1-2	Upto 0.54
Gandevi	Navsari	Gujarat	Mendhar	0.8-1.7	Upto 1.23
Valsad	Valsad	Gujarat	Malvan	1.2-1.6	Upto 0.31
Kodinar	Gir Somnath	Gujarat	Kodinar	0.7-1.5	Upto 0.45
Daman	Daman	Daman	Upto 0.12	1	1-4
Umargam	Valsad	Gujarat	Umargam	1.3-1.4	Upto 0.20
Dahanu	Palghar	Maharashtra	Narpad	0.4-1.2	Upto 1.05
Palghar	Palghar	Maharashtra	Akkarpatti	0.4-1	Upto 0.54
Vasai	Palghar	Maharashtra	Jalsar	0.7-0.8	Upto 1.11
Wada	Thane	Maharashtra	Juchandra	0.7-0.7	Upto 0.21
Alibag	Raigarh	Maharashtra	Ranjankhar Davali	0.2-0.6	Upto 1.90
Bombay	Mumbai City	Maharashtra	Greater Bombay	0.5-0.6	Nil
Panvel	Raigarh	Maharashtra	Gavhan	0.6-0.6	Upto 0.58
Uran	Raigarh	Maharashtra	Sheva	0.5-0.6	Upto 2.25