



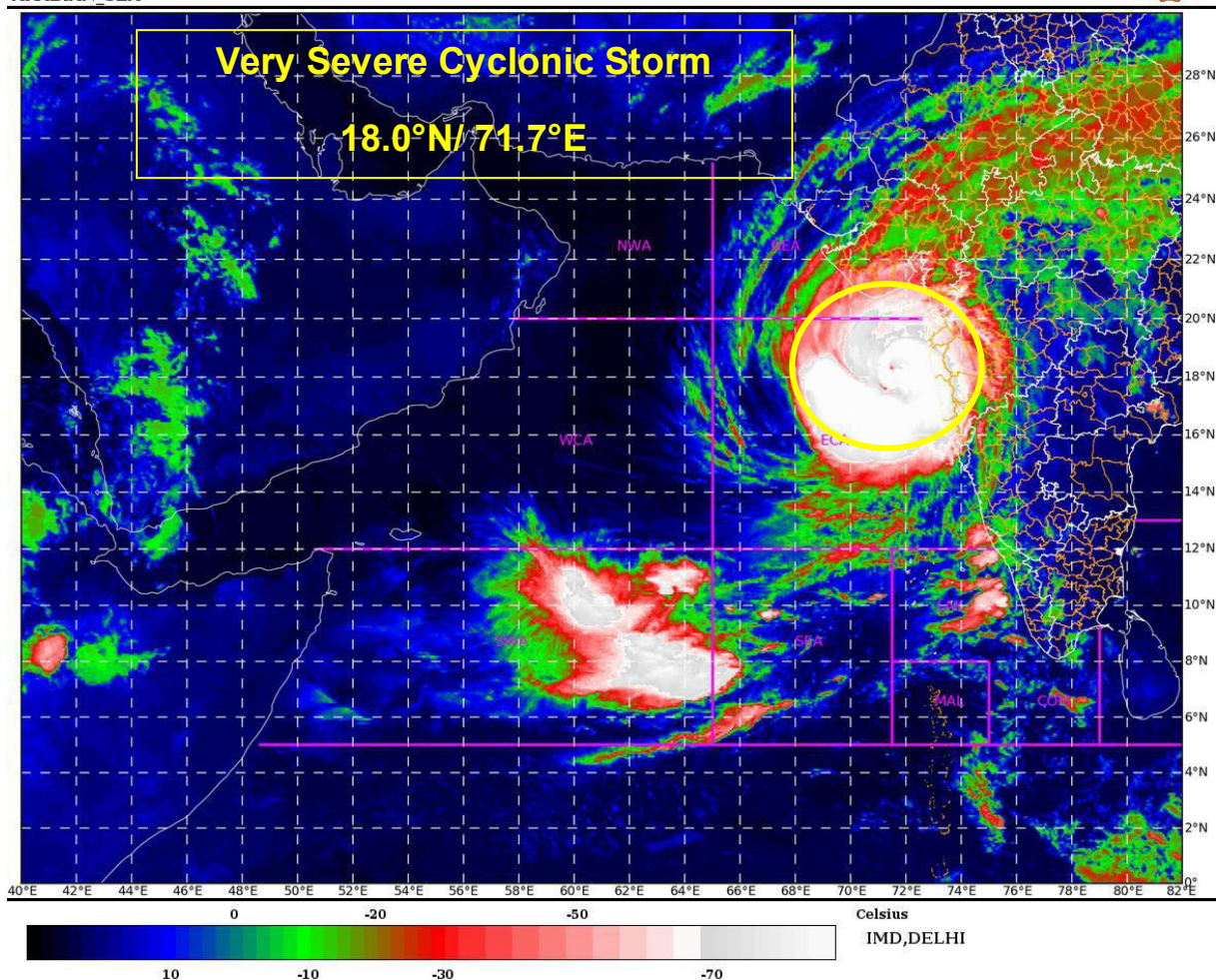
India Meteorological Department
(Ministry of Earth Sciences)

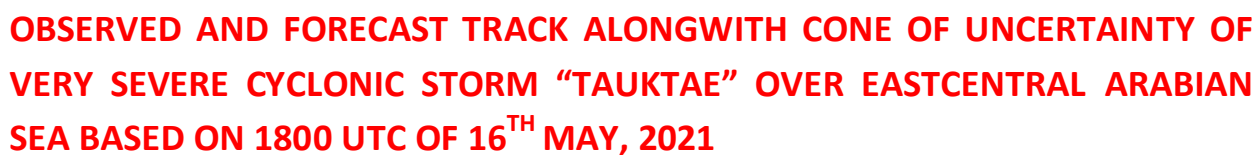
TIME OF ISSUE: 0415 HOURS IST

DATED: 17.05.2021

SAT : INSAT-3D IMG
IMG_TIR1_TEMP 10.8 um
ARABIAN_SEA

16-05-2021/(2200 to 2226) GMT
17-05-2021/(0330 to 0356) IST





L: LOW PRESSURE AREA

WML: WELL MARKED LOW PRESSURE AREA

D: DEPRESSION (17-27 KT)

DD: DEEP DEPRESSION (28-33 KT)

CS: CYCLONIC STORM (34-47 KT)

SCS: SEVERE CYCLONIC STORM (48-63KT)

VSCS: VERY SEVERE CYCLONIC STORM (64-89 KT)

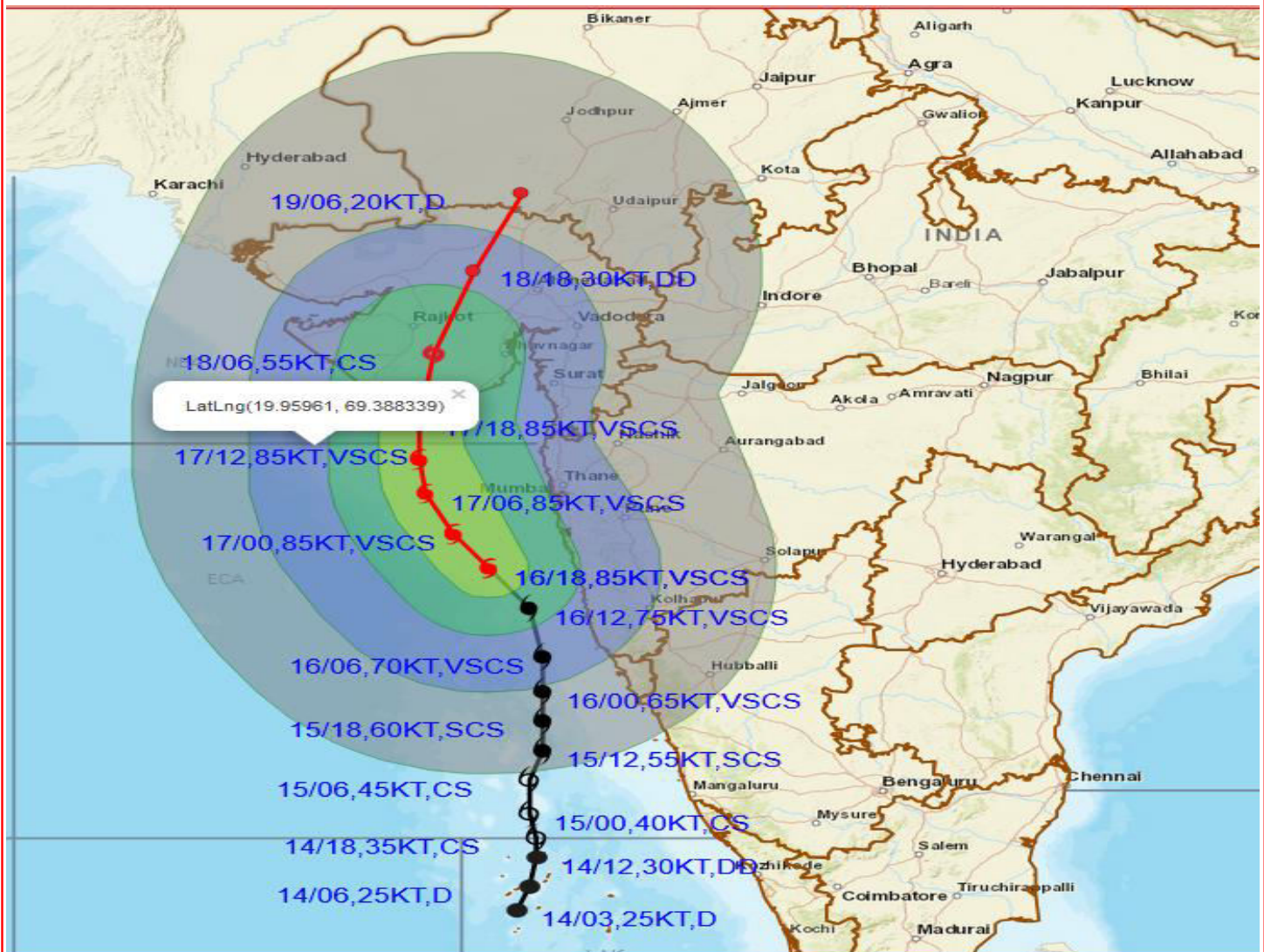
ESCS: EXTREMELY SEVERE CYCLONIC STORM (90-119 KT)

SuCS: SUPER CYCLONIC STORM (≥ 120 KT)





OBSERVED AND FORECAST TRACK ALONGWITH CONE OF UNCERTAINTY OF VERY SEVERE CYCLONIC STORM "TAUKTAE" OVER EASTCENTRAL ARABIAN SEA BASED ON 1800 UTC OF 16TH MAY, 2021



DATE/TIME IN UTC

IST=UTC + 0530

L: LOW PRESSURE AREA

WML: WELL MARKED LOW PRESSURE AREA

D: DEPRESSION (17-27 KT)

DD: DEEP DEPRESSION (28-33 KT)

CS: CYCLONIC STORM (34-47 KT)

SCS: SEVERE CYCLONIC STORM (48-63 KT)

VSCS: VERY SEVERE CYCLONIC STORM (64-89 KT)

ESCS: EXTREMELY SEVERE CYCLONIC STORM (90-119 KT)

SuCS: SUPER CYCLONIC STORM (≥ 120 KT)

● LESS THAN 34 KT

○ 34-47 KT

● ≥ 48 KT

— OBSERVED TRACK

— FORECAST TRACK

— CONE OF UNCERTAINTY

AREA OF MAXIMUM SUSTAINED WIND SPEED:

— 28-33 KT (52-61 KMPH)

— 34-49 KT (62-91 KMPH)

— 50-63 KT (92-117 KMPH)

— ≥ 64 KT (≥ 118 KMPH)

IMPACT OVER THE SEA

MSW (knot/kmph)	Impact	Action
28-33 (52-61)	Very rough seas	Total suspension of fishing operations
34-49 (62-91)	High to very high seas	Total suspension of fishing operations
50-63 (92-117)	Very high seas	Total suspension of fishing operations
≥ 64 (≥ 118)	Phenomenal	Total suspension of fishing operations

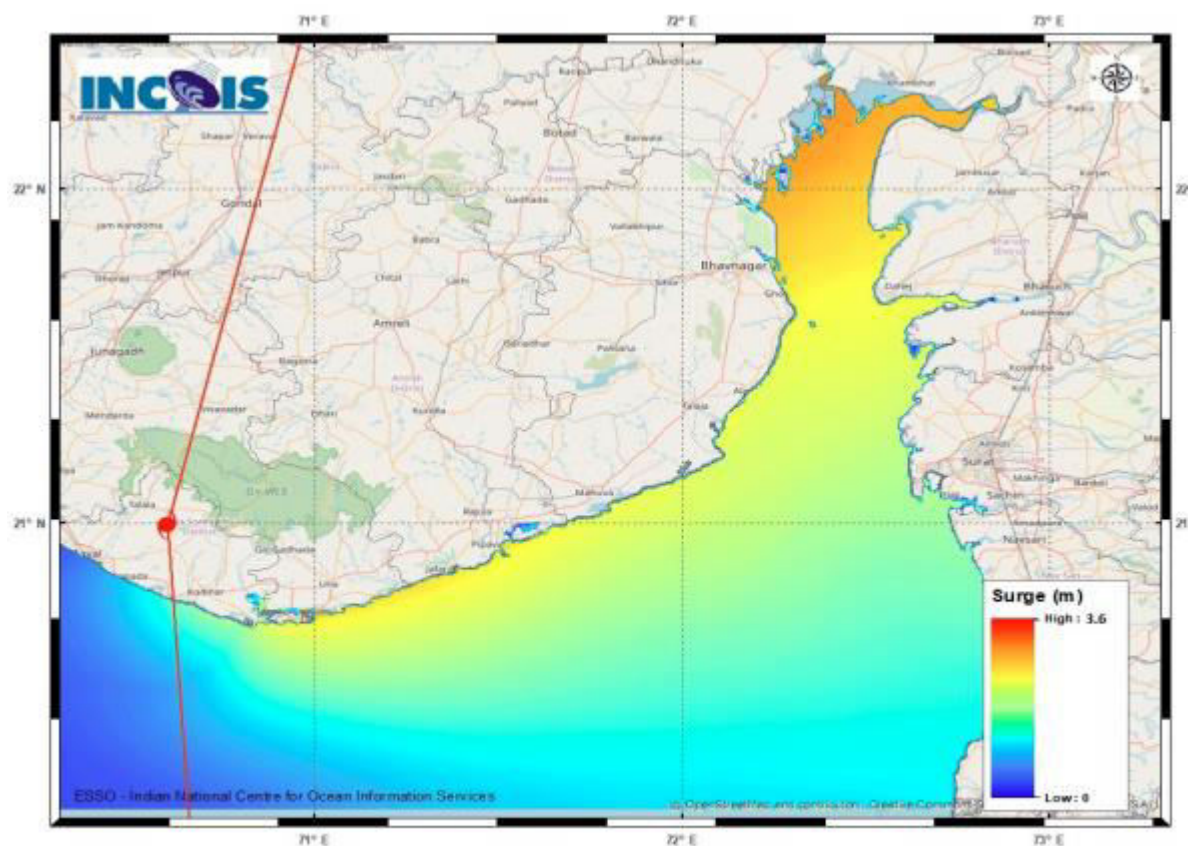


Figure: Storm Surge Map

MANDAL/TALUK	DISTRICT	STATE / UNION TERRITORY	NEAREST PLACE OF HABITATION	STORM SURGE (m) *	EXPECTED INUNDATION EXTENT (km)
Una	Junagadh	Gujarat	Una	1.2-3.6	Upto 0.9
Dhandhuka	Ahmadabad	Gujarat	Mitli	0.8-3.3	Upto 4.3
Hansot Mahal	Bharuch	Gujarat	Kantiyajal	1.0-2.3	Upto 3.3
Jafarabad	Amreli	Gujarat	Rohisa	2.5-2.6	Upto 0.1
Hazira	Surat	Gujarat	Hajira Ina (ina)	1.2-2.0	Upto 1.0
Kodinar	Gir Somnath	Gujarat	Kodinar	1.5-3.0	Upto 0.5
Mundra	Bhavnagar	Gujarat	Vadgam	2.4-2.4	Upto 0.9
Diu	Diu	Daman and Diu	Diu	1.6-2.9	Upto 0.7
Mahuva	Bhavnagar	Gujarat	Katpar (ct)	1.4-2.4	Upto 0.2
Bharuch	Bharuch	Gujarat	Kasva	1.3-2.3	Upto 0.1
Bhavnagar	Bhavnagar	Gujarat	Narbad	1.1-2.9	Upto 2.4
Borsad	Anand	Gujarat	Tithor	1.9-2.7	Upto 0.3
Chorasi	Surat	Gujarat	Bhimpor	1.4-1.8	Upto 1.0
Vagra	Bharuch	Gujarat	Harinagar	1.7-2.5	Upto 0.5
Valsad	Valsad	Gujarat	Malvan	1.1-1.5	Upto 0.3
Gandevi	Navsari	Gujarat	Mendhar	0.8-1.6	Upto 1.2
Dahanu	Palghar	Maharashtra	Narpad	0.5-1.2	Upto 1.0
Daman	Daman	Daman and Diu	Daman	0.9-1.3	Nil
Navsari	Navsari	Gujarat	Borsi	0.9-1.8	Upto 0.4
Olpad	Surat	Gujarat	Vansva	1.5-2.1	Upto 0.6
Veraval	Gir Somnath	Gujarat	Mul Dwarka	0.5-1.8	Upto 0.2
Palghar	Palghar	Maharashtra	Akkarpatti	0.4-1.0	Upto 0.5
Panvel	Raigarh	Maharashtra	Gavhan	0.7-0.7	Upto 0.5
Rajula	Amreli	Gujarat	Patva	1.1-2.7	Upto 0.3
Talaja	Bhavnagar	Gujarat	Talaja	1.6-2.3	Upto 0.2
Umargam	Valsad	Gujarat	Umargam	1.2-1.3	Upto 0.2
Uran	Raigarh	Maharashtra	Sheva	0.6-0.7	Upto 2.2
Vasai	Palghar	Maharashtra	Jalsar	0.8-0.9	Upto 1.1
Wada	Thane	Maharashtra	Juchandra	0.8-0.8	Upto 0.2
Bombay	Mumbai City	Maharashtra	Greater Bombay	0.6-0.7	Nil
Alibag	Raigarh	Maharashtra	Ranjankhar Davali	0.5-0.7	Upto 1.9
Maliya	Junagadh	Gujarat	Vadodra Dodiya	0.3-0.3	Upto 0.1
Mangaon	Raigarh	Maharashtra	Water Body	0.5-0.5	Upto 0.1