

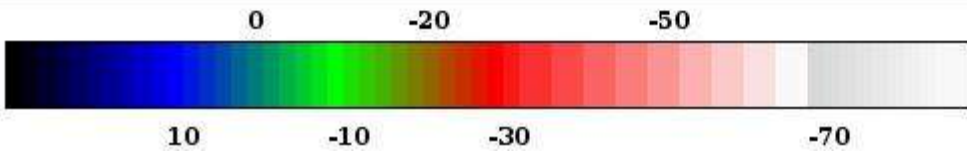
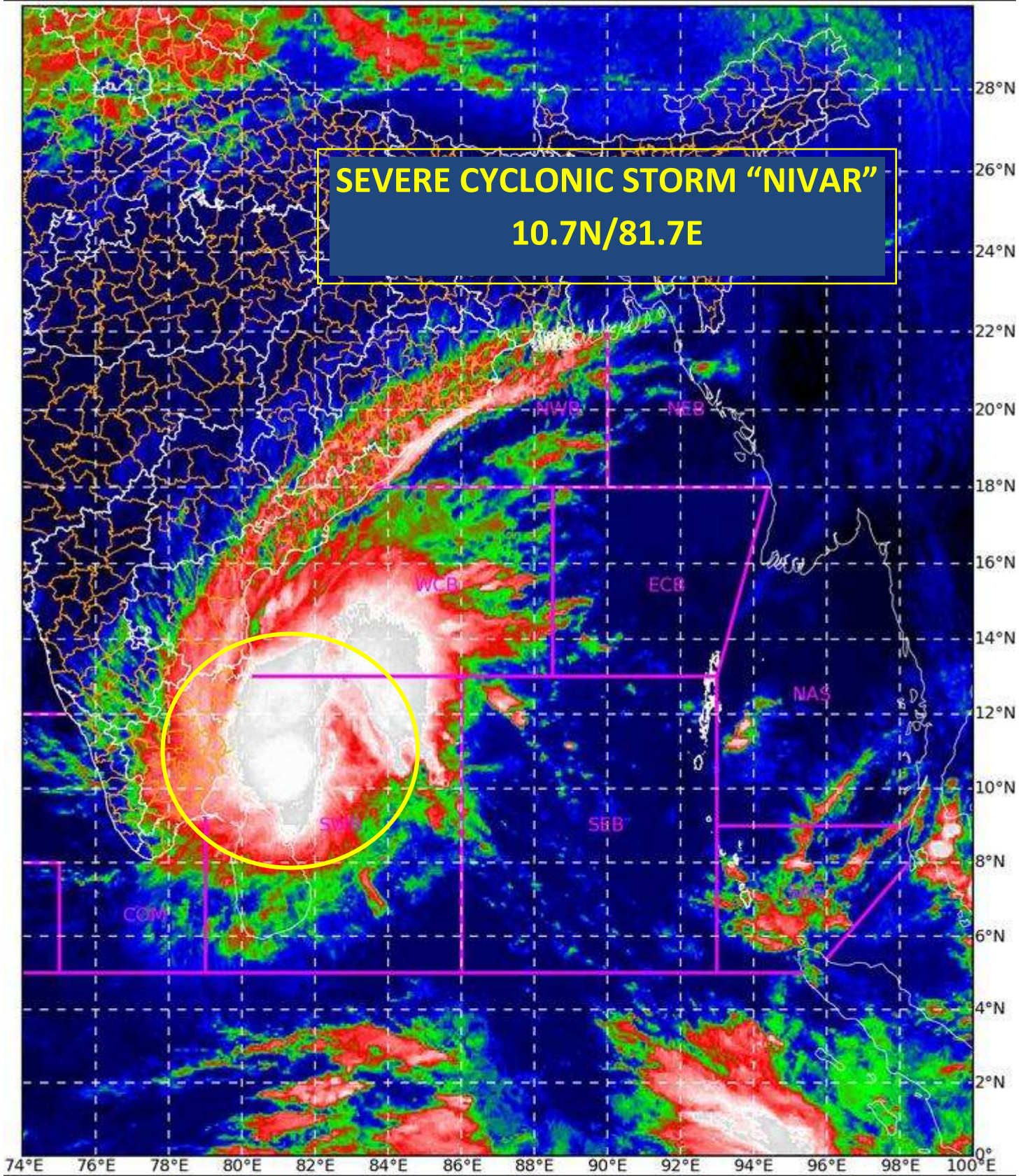
SAT : INSAT-3D IMG

25-11-2020/(0400 to 0427) GMT

IMG\_TIR1\_TEMP 10.8 um

25-11-2020/(0930 to 0957) IST

L1C Mercator

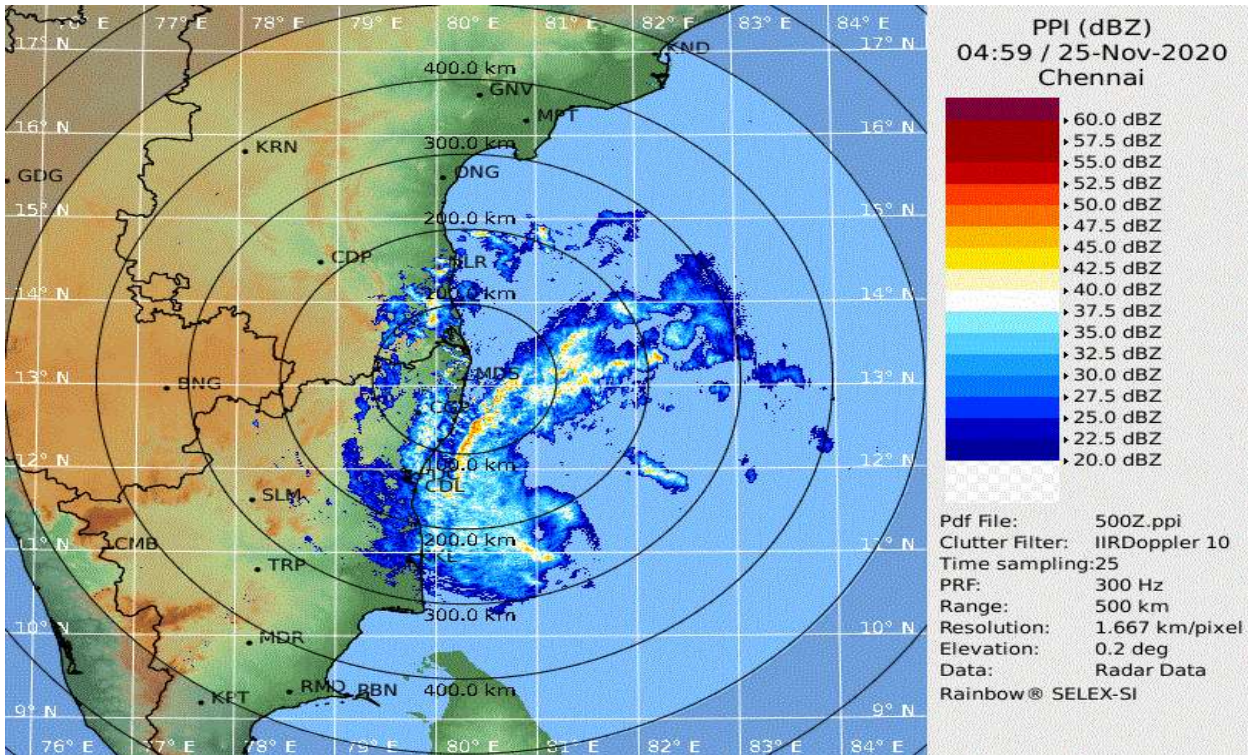


Celsius  
IMD, DELHI

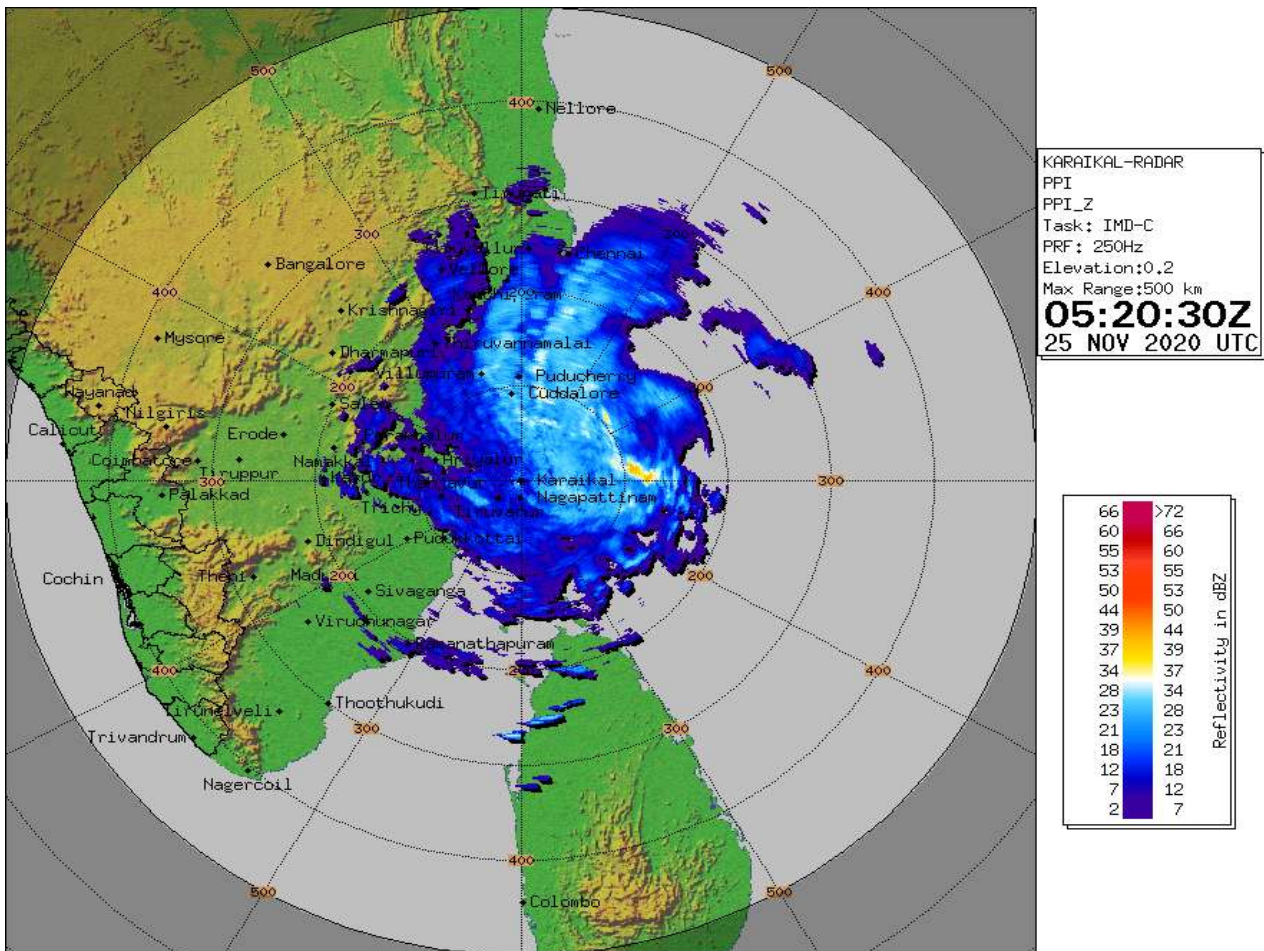
Spatial rainfall distribution: Isolated: ≤25%, A few: 26-50%, Many: 51-75%, Most: 76-100%  
Rainfall amount (mm): Heavy rain: 64.5 – 115.5, Very heavy rain: 115.6 – 204.4, Extremely heavy rain: 204.5 or more.



### DWR Chennai Imagery based on 1030 IST of 25<sup>th</sup> November



### DWR Karaikal Imagery based on 1050 IST of 25<sup>th</sup> November

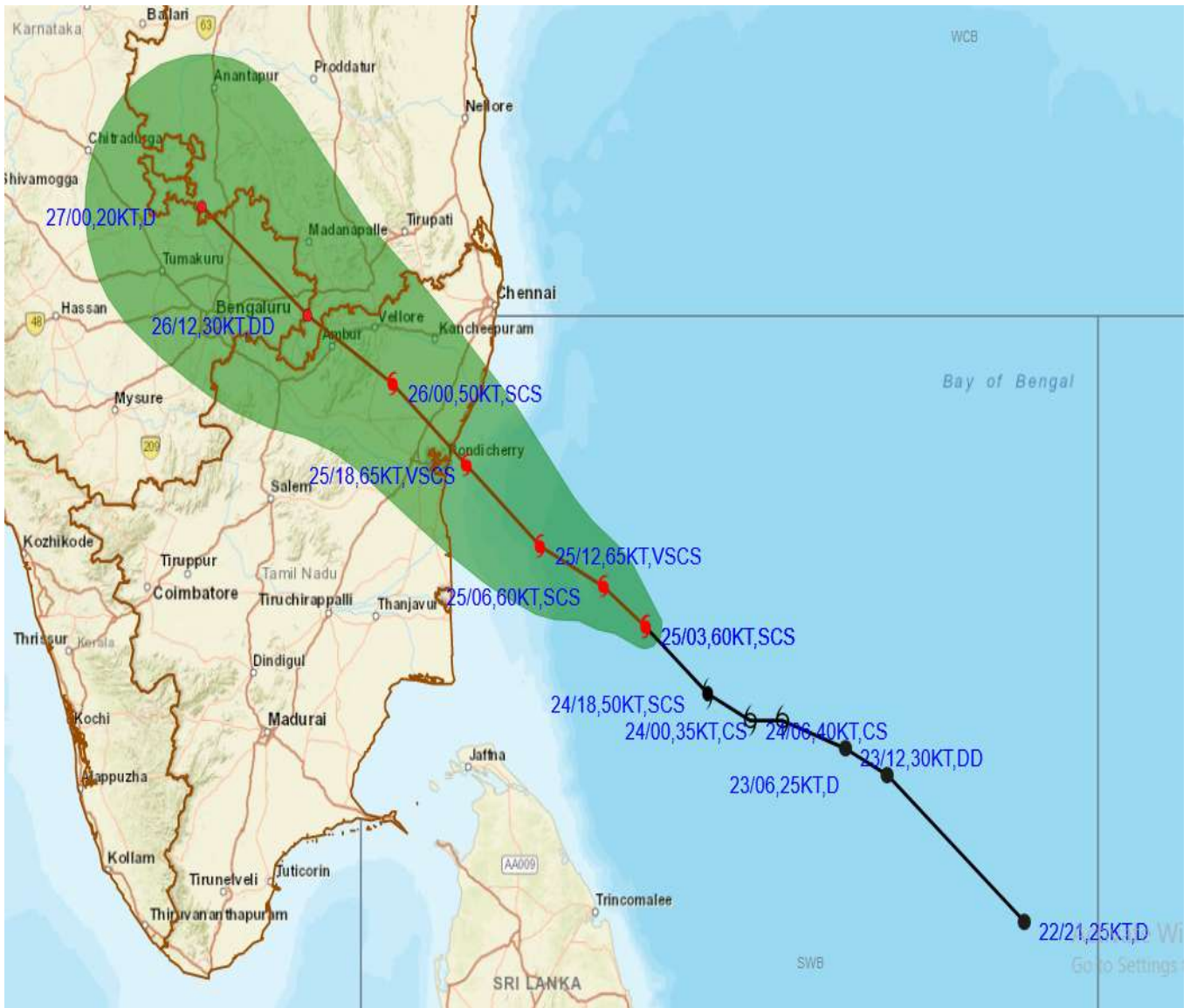


**Spatial rainfall distribution: Isolated: ≤25%, A few: 26-50%, Many: 51-75%, Most: 76-100%**  
**Rainfall amount (mm): Heavy rain: 64.5 – 115.5, Very heavy rain: 115.6 – 204.4, Extremely heavy rain: 204.5 or more.**





**OBSERVED AND FORECAST TRACK ALONGWITH CONE OF UNCERTAINTY OF SEVERE CYCLONIC STORM NIVAR OVER SOUTHWEST BAY OF BENGAL BASED ON 0300UTC OF 25<sup>TH</sup> NOVEMBER, 2020.**



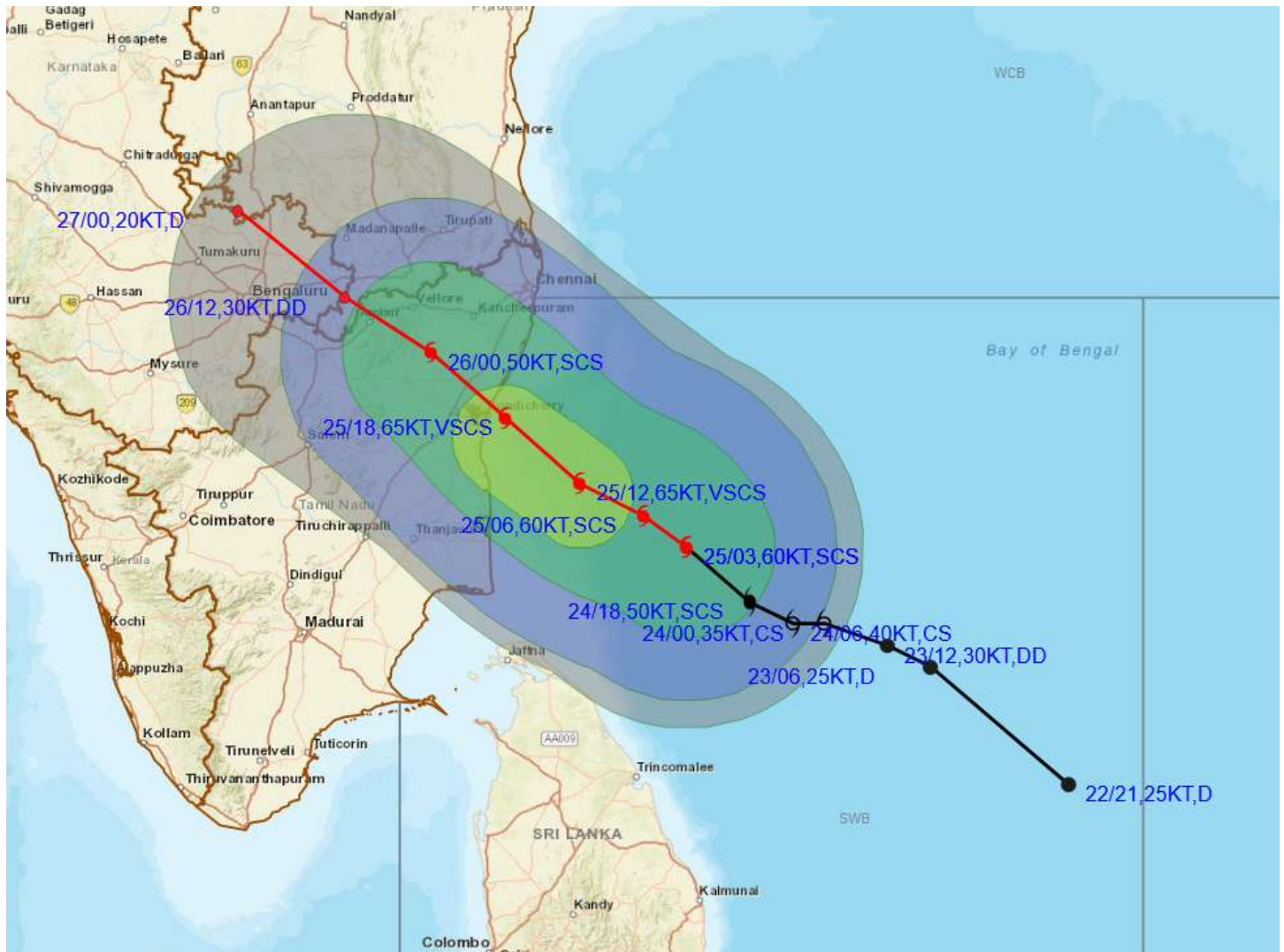
DATE/TIME IN UTC  
 IST=UTC + 0530  
 L: LOW PRESSURE AREA  
 WML: WELL MARKED LOW PRESSURE AREA  
 D: DEPRESSION (17-27 KT)  
 DD: DEEP DEPRESSION (28-33 KT)  
 CS: CYCLONIC STORM (34-47 KT)  
 SCS: SEVERE CYCLONIC STORM (48-63KT)  
 VSCS: VERY SEVERE CYCLONIC STORM (64-89 KT)  
 ESCS: EXTREMELY SEVERE CYCLONIC STORM (90-119 KT)  
 SuCS: SUPER CYCLONIC STORM ( $\geq$  120 KT)

- LESS THAN 34 KT
- 34-47 KT
- $\geq$  48 KT
- OBSERVED TRACK
- FORECAST TRACK
- CONE OF UNCERTAINTY

Spatial rainfall distribution: Isolated:  $\leq$ 25%, A few: 26-50%, Many: 51-75%, Most: 76-100%  
 Rainfall amount (mm): Heavy rain: 64.5 – 115.5, Very heavy rain: 115.6 – 204.4, Extremely heavy rain: 204.5 or more.



# OBSERVED AND FORECAST TRACK ALONGWITH QUADRANT WIND DISTRIBUTION OF SEVERE CYCLONIC STORM NIVAR OVER SOUTHWEST BAY OF BENGAL BASED ON 0300UTC OF 25<sup>TH</sup> NOVEMBER, 2020



DATE/TIME IN UTC  
 IST=UTC + 0530  
 L: LOW PRESSURE AREA  
 WML: WELL MARKED LOW PRESSURE AREA  
 D: DEPRESSION (17-27 KT)  
 DD: DEEP DEPRESSION (28-33 KT)  
 CS: CYCLONIC STORM (34-47 KT)  
 SCS: SEVERE CYCLONIC STORM (48-63KT)  
 VSCS: VERY SEVERE CYCLONIC STORM (64-89 KT)  
 ESCS: EXTREMELY SEVERE CYCLONIC STORM (90-119 KT)  
 SuCS: SUPER CYCLONIC STORM (≥ 120 KT)

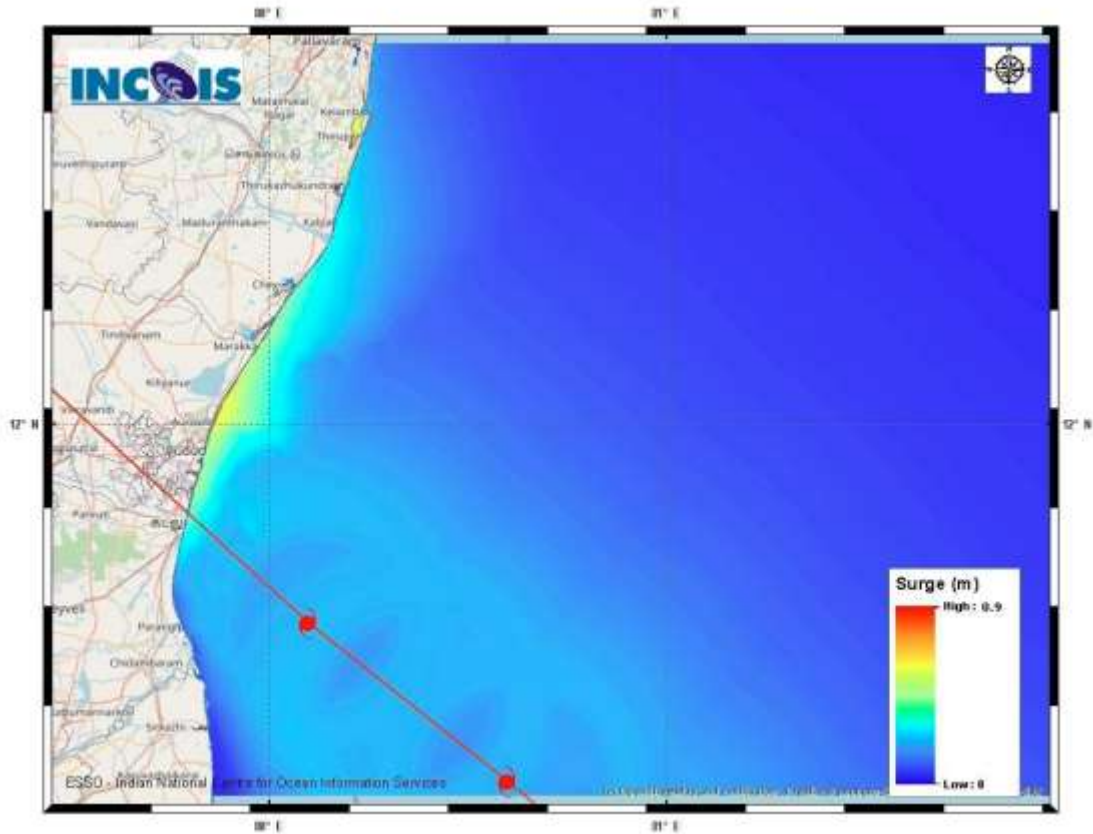
● LESS THAN 34 KT  
 ◉ 34-47 KT  
 ◐ ≥ 48 KT  
 — OBSERVED TRACK  
 — FORECAST TRACK  
 — CONE OF UNCERTAINTY  
 AREA OF MAXIMUM SUSTAINED WIND SPEED:  
 ■ 28-33 KT (52-61 KMPH)  
 ■ 34-49 KT (62-91 KMPH)  
 ■ 50-63 KT (92-117 KMPH)  
 ■ ≥ 64 KT (≥118 KMPH)

### IMPACT OVER THE SEA

MSW (knot/kmph)	Impact	Action
28-33 (52-61)	Very rough seas	Total suspension of fishing operations
34-49 (62-91)	High to very high seas	Total suspension of fishing operations
50-63 (92-117)	Very high seas	Total suspension of fishing operations
≥ 64 (≥118)	Phenomenal	Total suspension of fishing operations

Spatial rainfall distribution: Isolated: ≤25%, A few: 26-50%, Many: 51-75%, Most: 76-100%  
 Rainfall amount (mm): Heavy rain: 64.5 – 115.5, Very heavy rain: 115.6 – 204.4, Extremely heavy rain: 204.5 or more.





**Storm Surge Guidance based on 0130 UTC observations of 25<sup>th</sup> November**

Expected Maximum Storm Surge - 0.9m Near Kancheepuram & Villupuram, Tamil Nadu

Expected Maximum Inundation Extent - 0.2 Km near Chengalpattu, Kancheepuram

**STORM SURGE HEIGHT INFORMATION:**

\* The below listed surge heights are over and above astronomical tide.

MANDAL/TALUK	DISTRICT	STATE / UNION TERRITORY	NEAREST PLACE OF HABITATION	STORM SURGE (m) *	EXPECTED INUNDATION EXTENT (km)
Chengalpattu	Kancheepuram	Tamil Nadu	Thiruporur	0.4-0.9	Upto 0.2
Cheyyur	Kancheepuram	Tamil Nadu	Kadalur	0.3-0.5	Nil
Cuddalore	Cuddalore	Tamil Nadu	Cuddalore	0.3-0.5	Nil
Tindivanam	Viluppuram	Tamil Nadu	Ozhukarai Municipality	0.5-0.6	Upto 0.13
Tirutturaippundi	Nagapattinam	Tamil Nadu	Vaimedu west	0.2-0.5	Upto 0.11

**Spatial rainfall distribution: Isolated: ≤25%, A few: 26-50%, Many: 51-75%, Most: 76-100%**

**Rainfall amount (mm): Heavy rain: 64.5 – 115.5, Very heavy rain: 115.6 – 204.4, Extremely heavy rain: 204.5 or more.**